



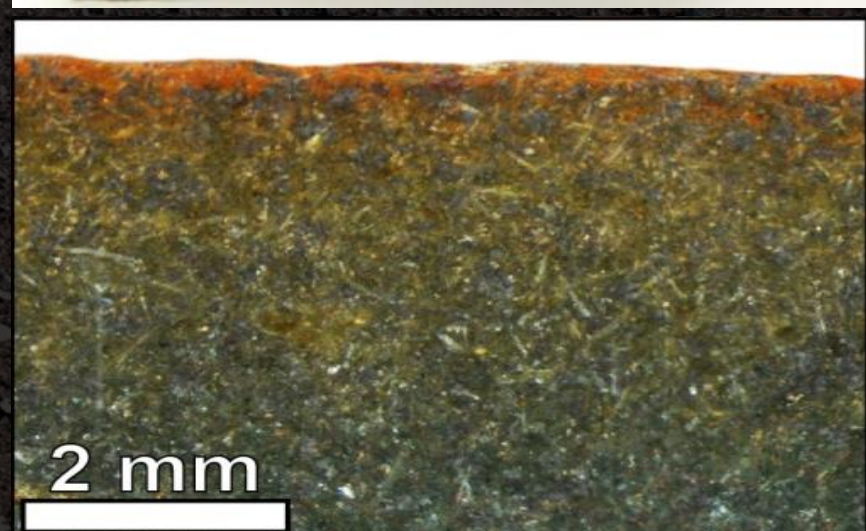
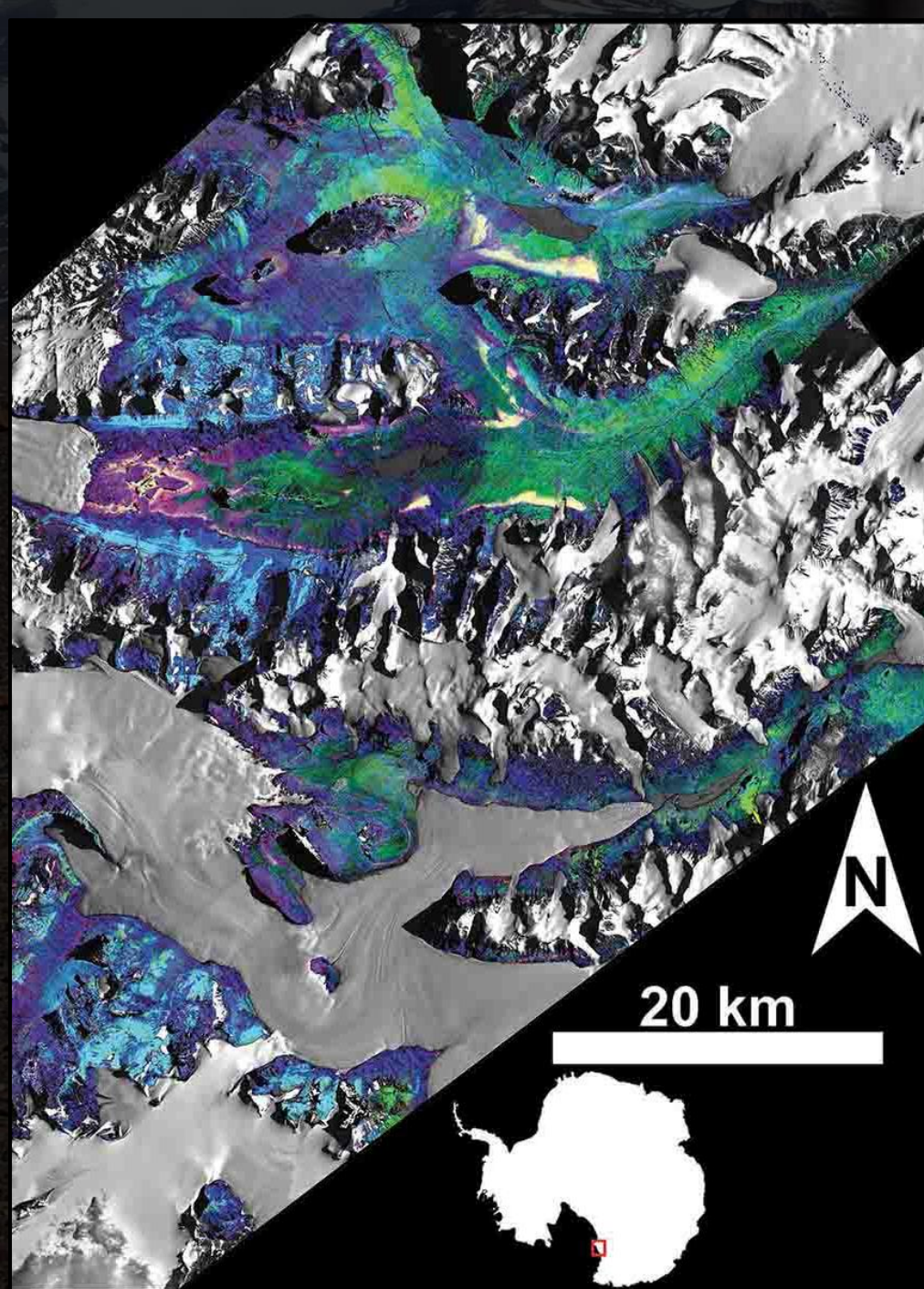
# COMPARATIVE PLANETOLOGY:

## Antarctica as an Analog for the Martian Surface

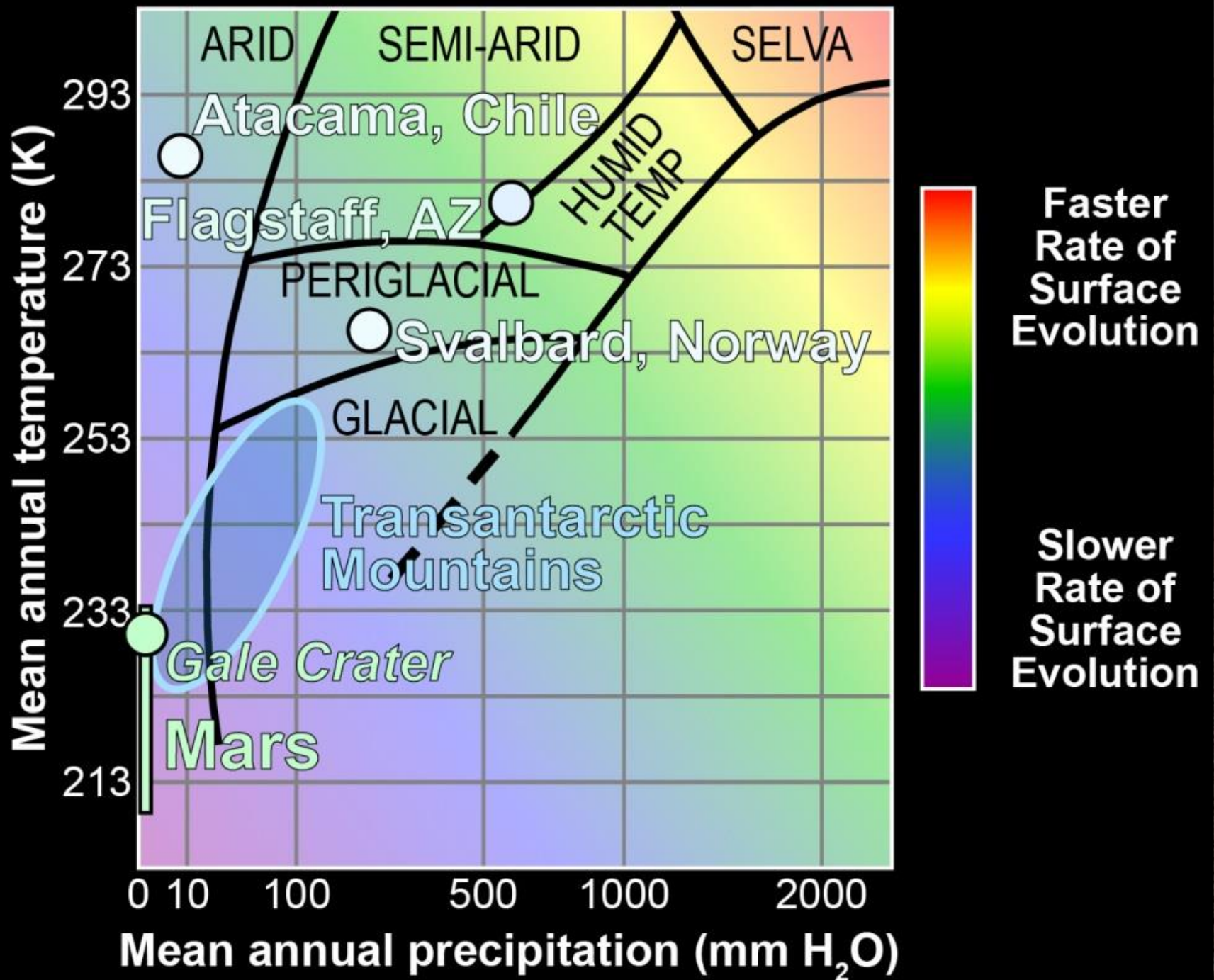
**Mark Salvatore**

Dept. of Physics & Astronomy | Northern Arizona University  
[mark.salvatore@nau.edu](mailto:mark.salvatore@nau.edu)











**Beacon Valley,  
McMurdo Dry Valleys, Antarctica**

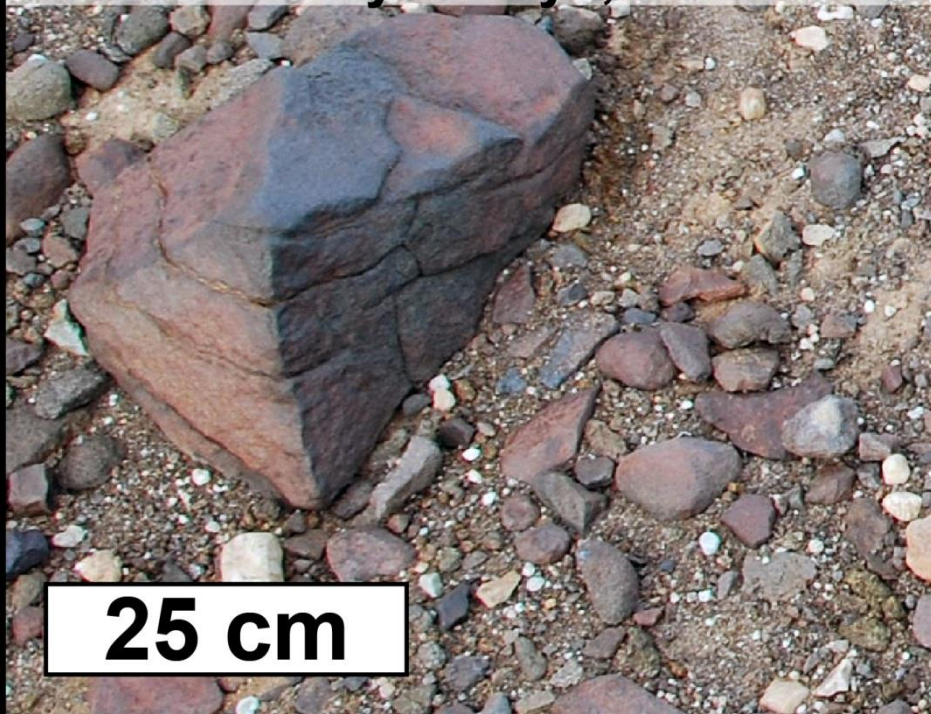
5 km

**Bradbury Landing & Mt. Sharp,  
Gale Crater, Mars**

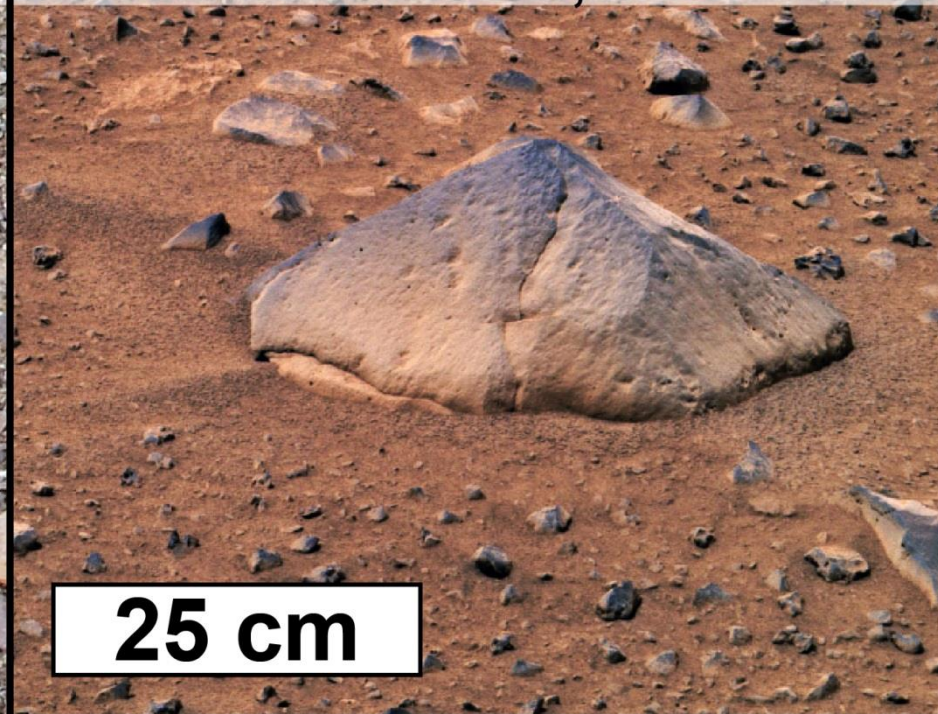
16 km



**Beacon Valley,  
McMurdo Dry Valleys, Antarctica**

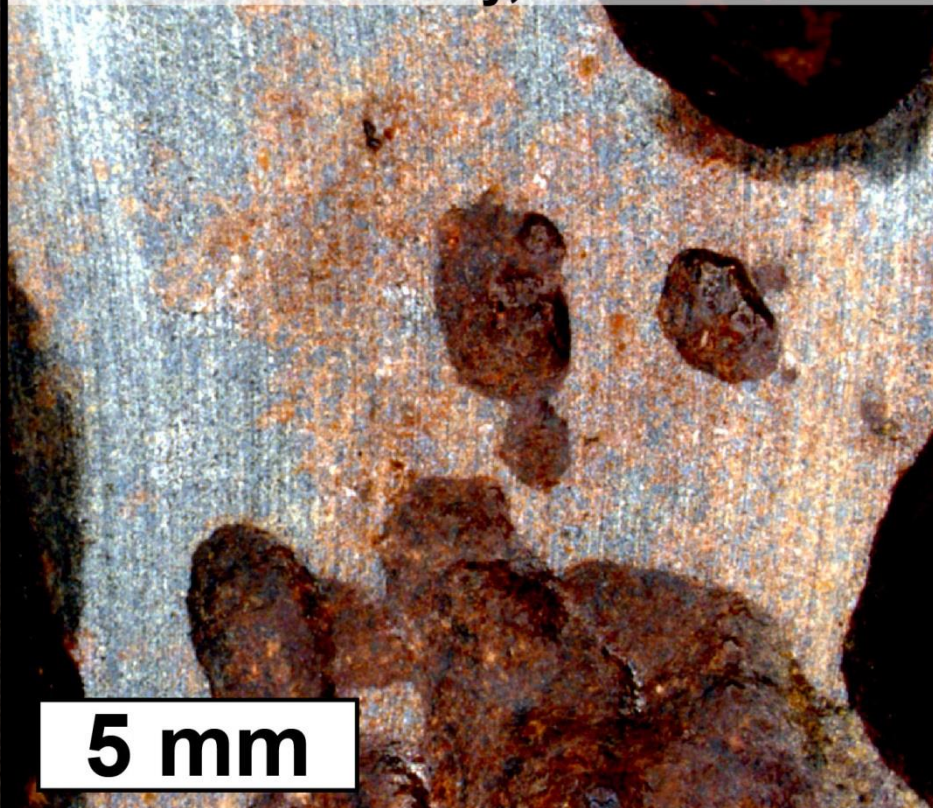


**Adirondack, MER-A Landing Site,  
Gusev Crater, Mars**

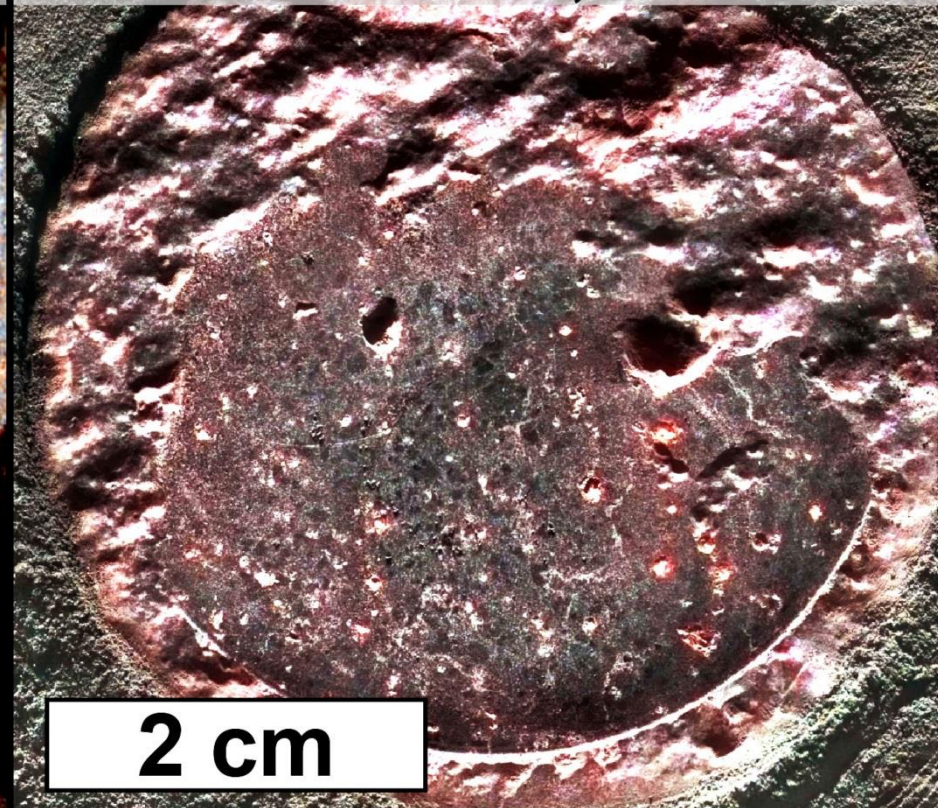




Grind into basaltic clast,  
Beacon Valley, Antarctica



“RAT” grind into *Humphrey*,  
Gusev Crater, Mars









# JOURNEY TO MARS

