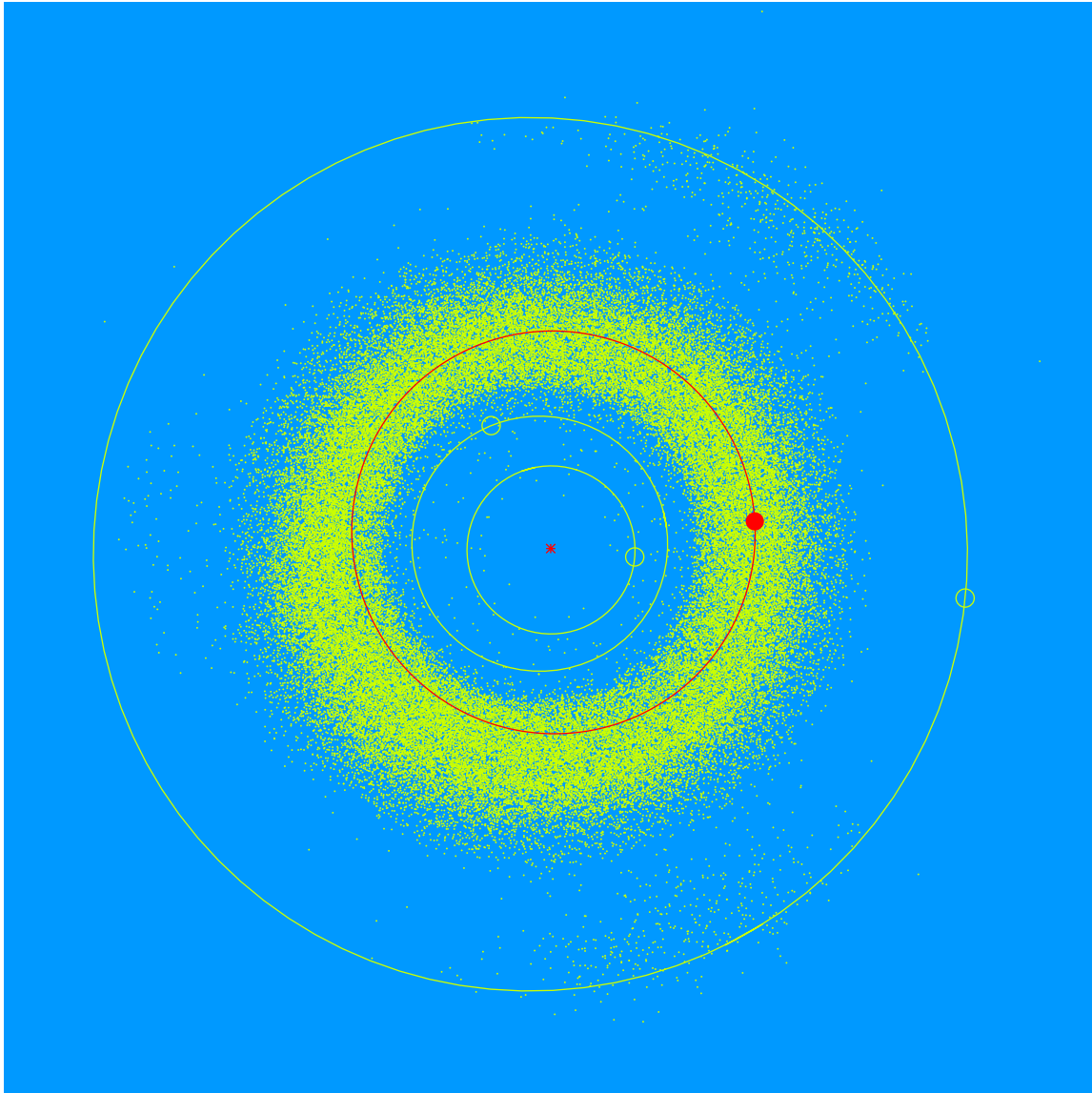


(26284) Johnspahn = 1998 SZ₅₉

Discovered 1998 Sept. 17 at the Anderson Mesa Station of Lowell Observatory

John Spahn (b. 1944) has volunteered at Lowell Observatory since 2012. He has helped with various projects in Development, Archives, the volunteer program and the business office, including donor research and the cataloging of books, glass plate negatives, and other artifacts.



Semimajor axis	2.41 AU
Eccentricity	0.082
Inclination	7.20 deg
Diameter	2–3 km