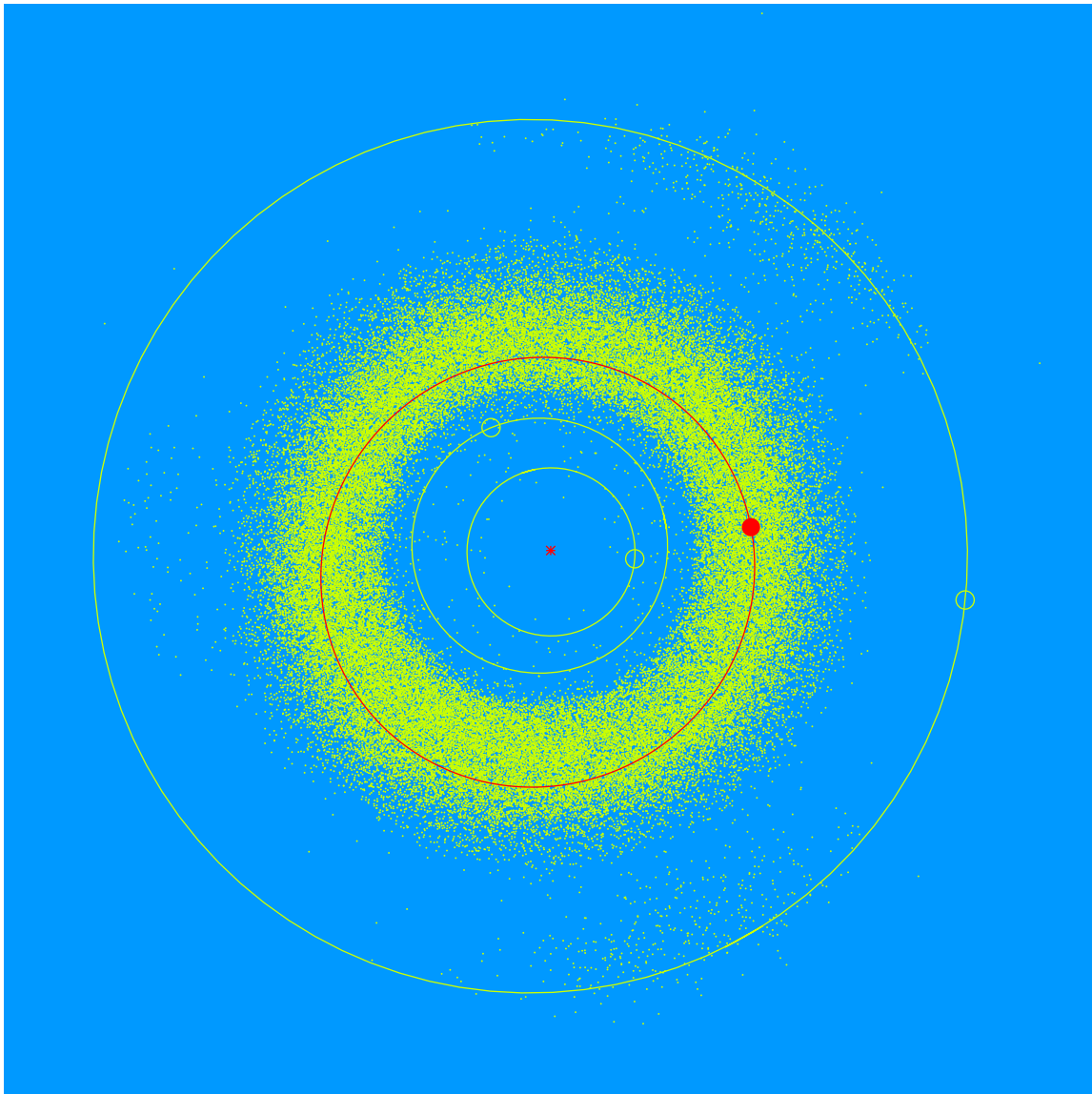


(26285) Lindaspahn = 1998 SS₆₁

Discovered 1998 Sept. 17 at the Anderson Mesa Station of Lowell Observatory Linda Spahn (b. 1945) has volunteered at Lowell Observatory since 2012. She has helped with projects in the Archives, such as cataloging, and has also contributed her skills to gardening and beautifying the Lowell campus.



| | |
|----------------|-----------|
| Semimajor axis | 2.61 AU |
| Eccentricity | 0.117 |
| Inclination | 12.48 deg |
| Diameter | 3–4 km |