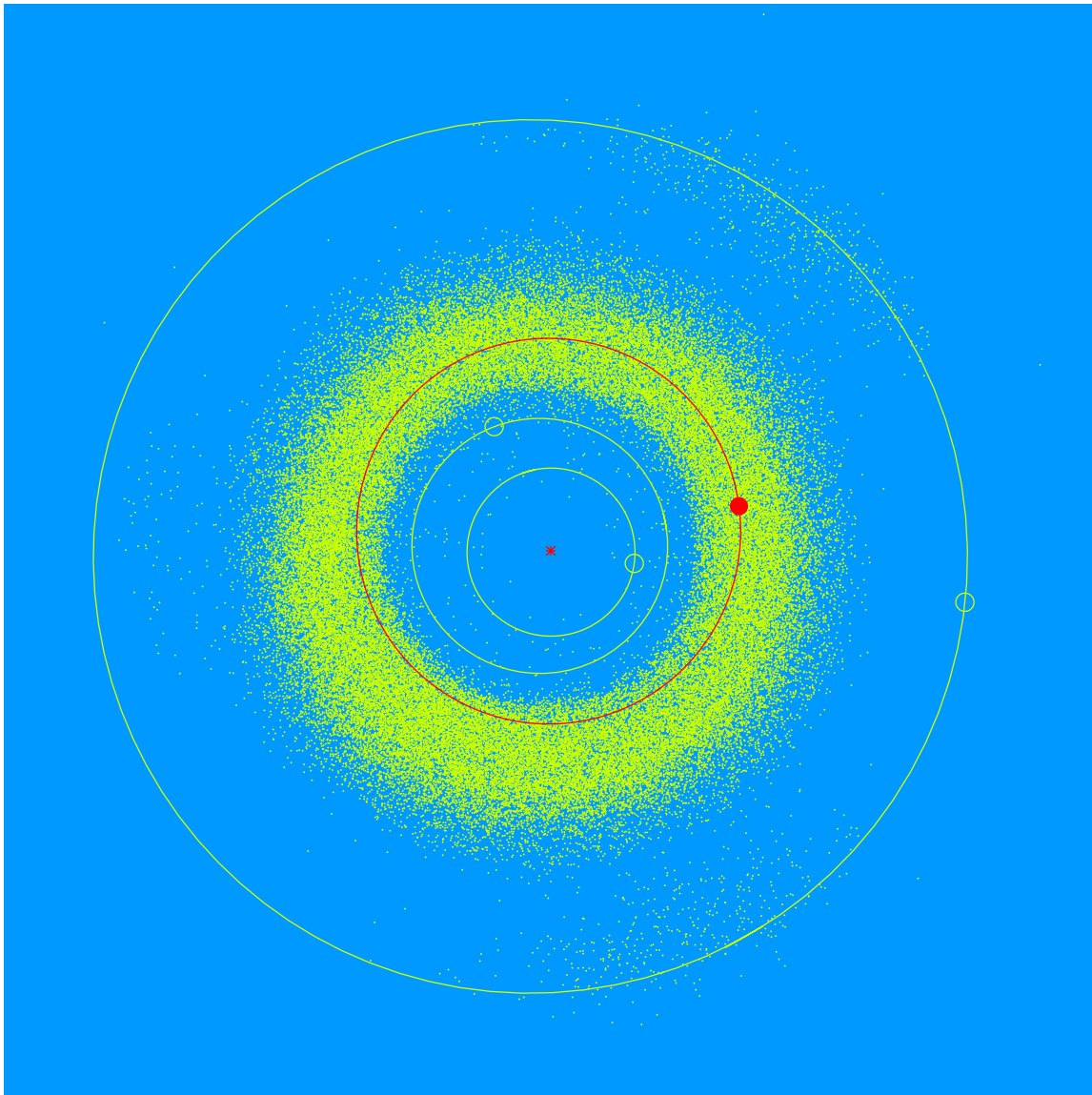


(26261) Tinafreeman = 1998 RL₆

Discovered 1998 Sept. 14 at the Anderson Mesa Station of Lowell Observatory

Tina Freeman (b. 1955) has volunteered in the Lowell Observatory Archives since 2012. She has organized and cataloged the correspondence of Lowell Observatory historian William Graves Hoyt.



Semimajor axis	2.30 AU
Eccentricity	0.101
Inclination	2.65 deg
Diameter	3–4 km