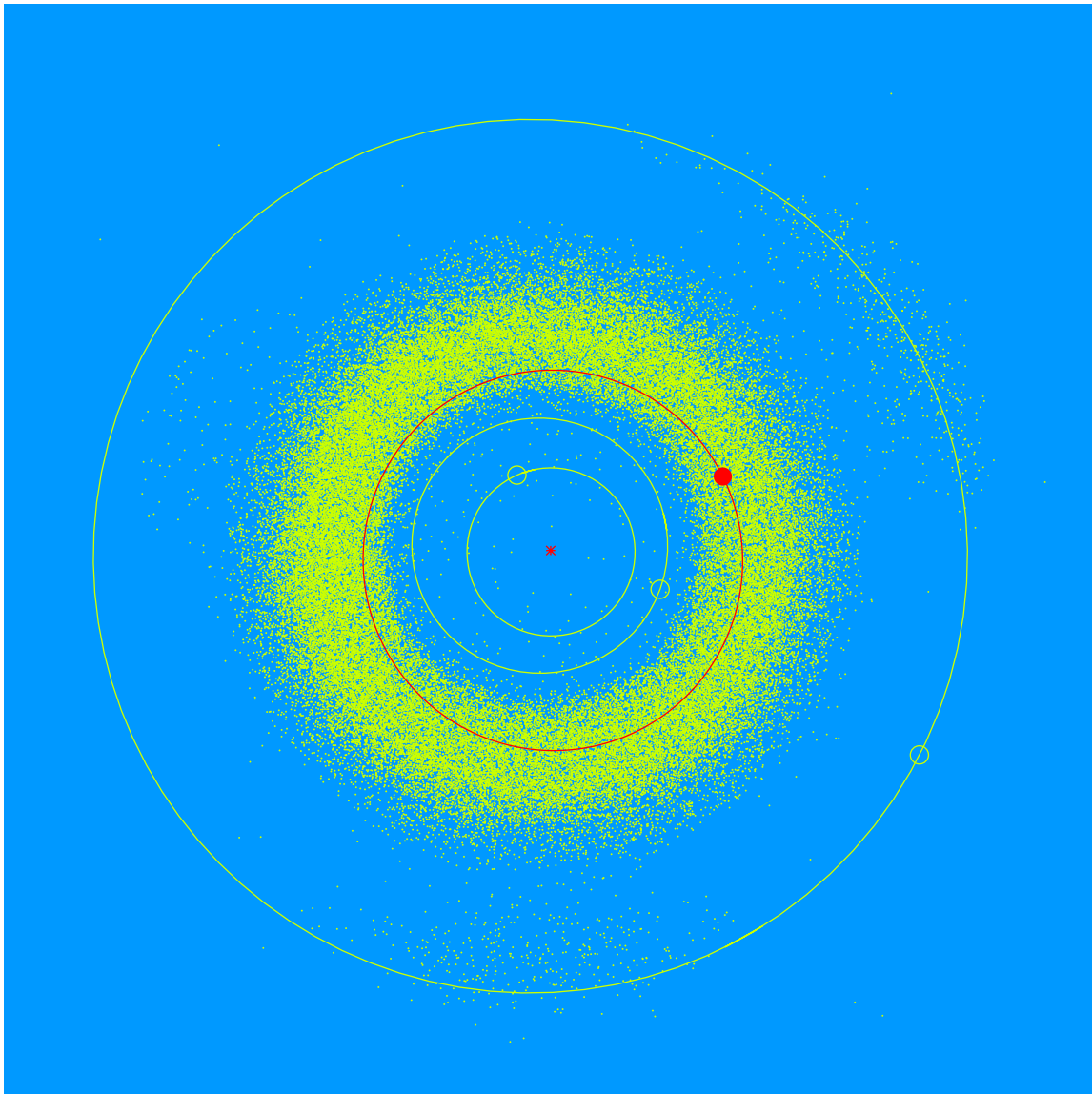


(29728) Averbeck = 1999 AM₃₄ Discovered 1999 Jan. 14 by the Lowell Observatory Near-Earth Object Search at the Anderson Mesa Station.

George Averbeck (b. 1954) is a renowned American glass artist, owner of a glass blowing studio, and longtime community leader in Flagstaff, Arizona. Among his popular artistic creations are glass ornaments depicting planets and dark skies.



Semimajor axis	2.27 AU
Eccentricity	0.053
Inclination	4.99 deg
Diameter	2–3 km