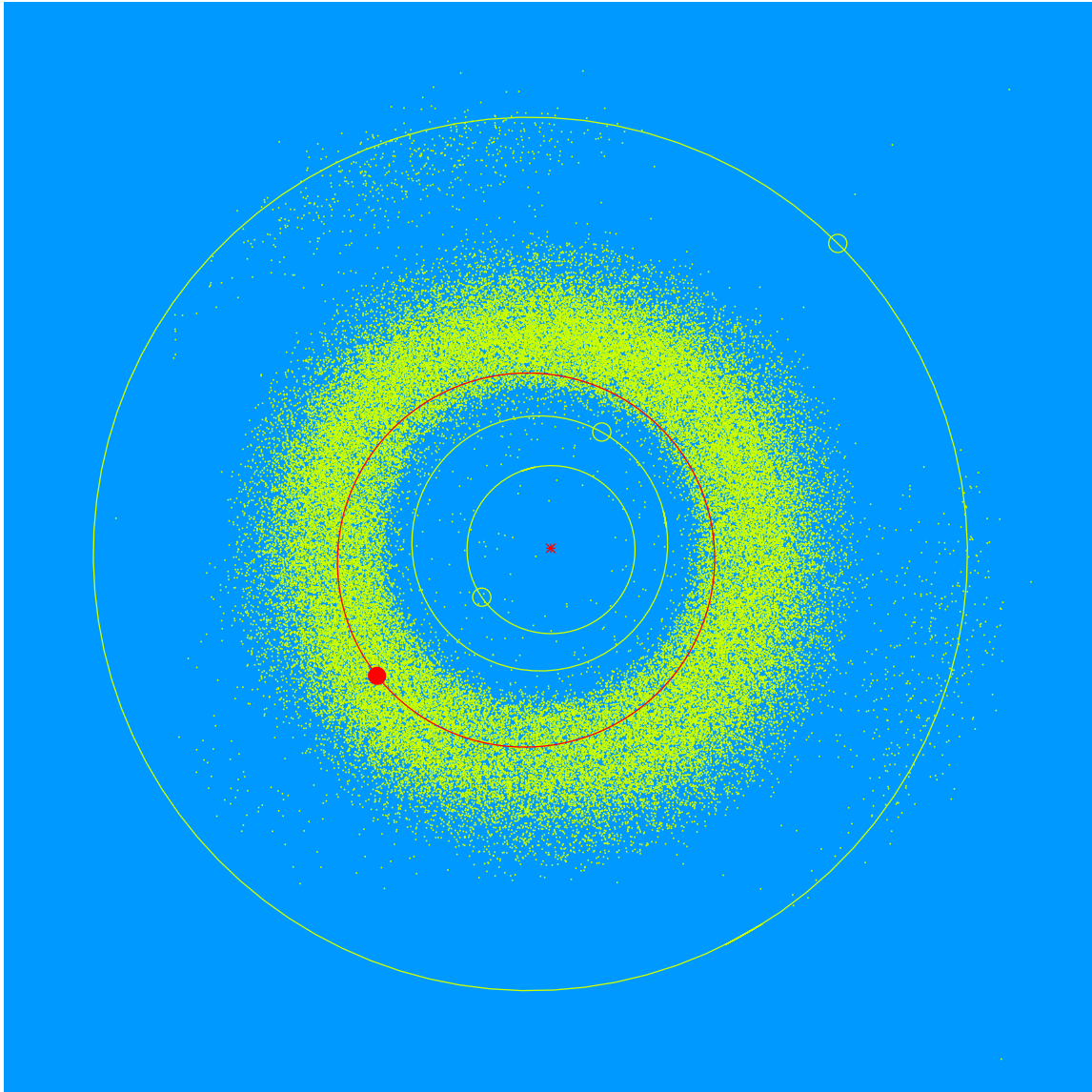


**(28799) Christopherford = 2000 HB<sub>72</sub>**

Discovered 2000 Apr. 25 by the Lowell Observatory Near-Earth Object Search at the Anderson Mesa Station.

Christopher Ford (b. 1959) is a leading American authority in computer graphics and media development in film visual effects, game and video production, and astronomical visualization. He is a former President of the Astronomical Society of the Pacific and joined the Lowell Observatory Board in 2023.



Semimajor axis	2.25 AU
Eccentricity	0.145
Inclination	3.33 deg
Diameter	2–3 km