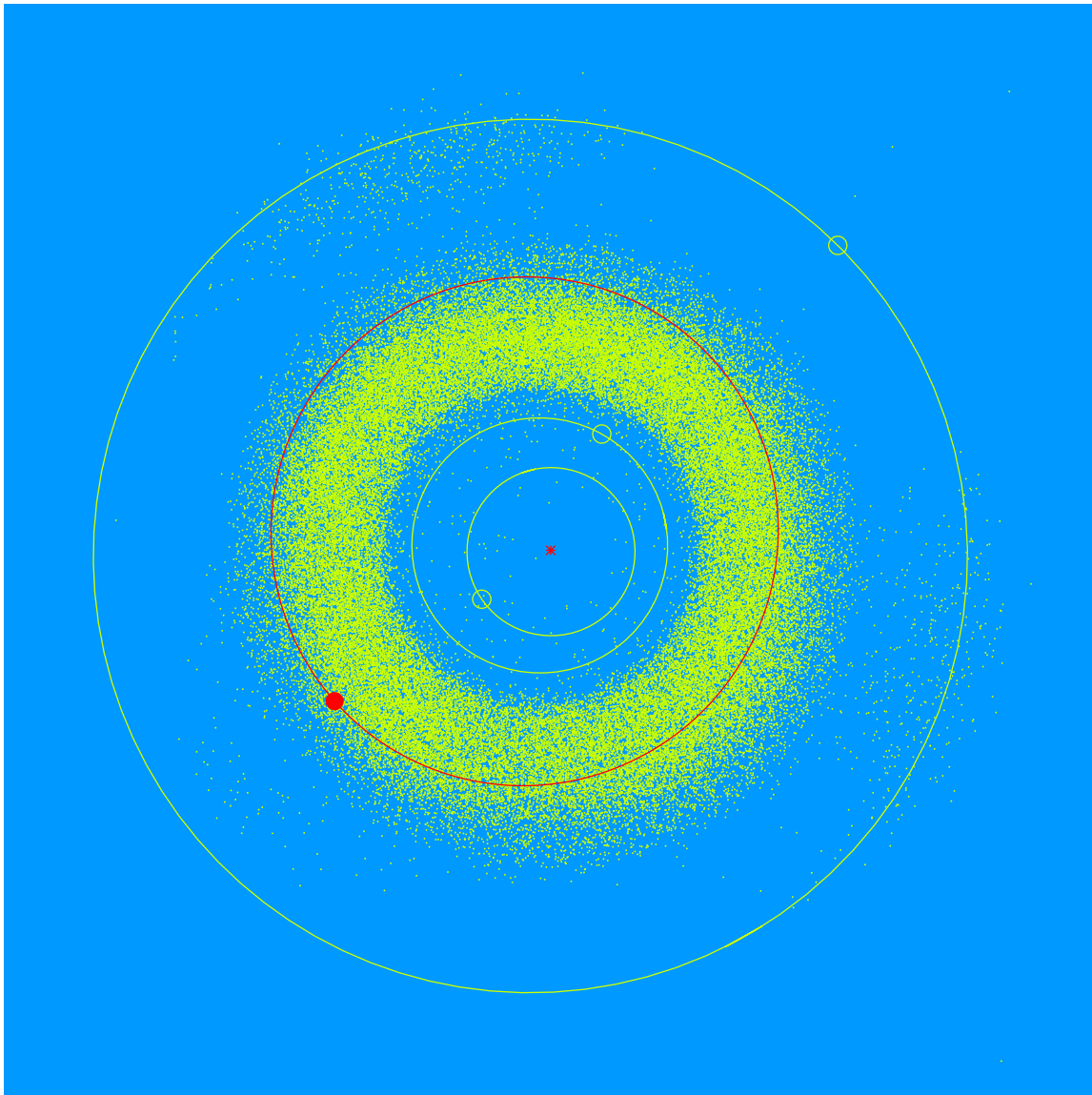


(30285) Ellsworthbowers = 2000 HB₅₉ Discovered 2000 Apr. 25 by the Lowell Observatory Near-Earth Object Search at the Anderson Mesa Station.

Timothy Ellsworth-Bowers (b. 1979) is the Support Astronomer at Lowell Observatory, USA, for the Lowell Discovery Telescope. He helps observers optimize the use of the telescope and their data. Timothy's research interests include dense molecular clouds and open clusters in the Milky Way.



Semimajor axis	3.06 AU
Eccentricity	0.130
Inclination	10.23 deg
Diameter	4–6 km