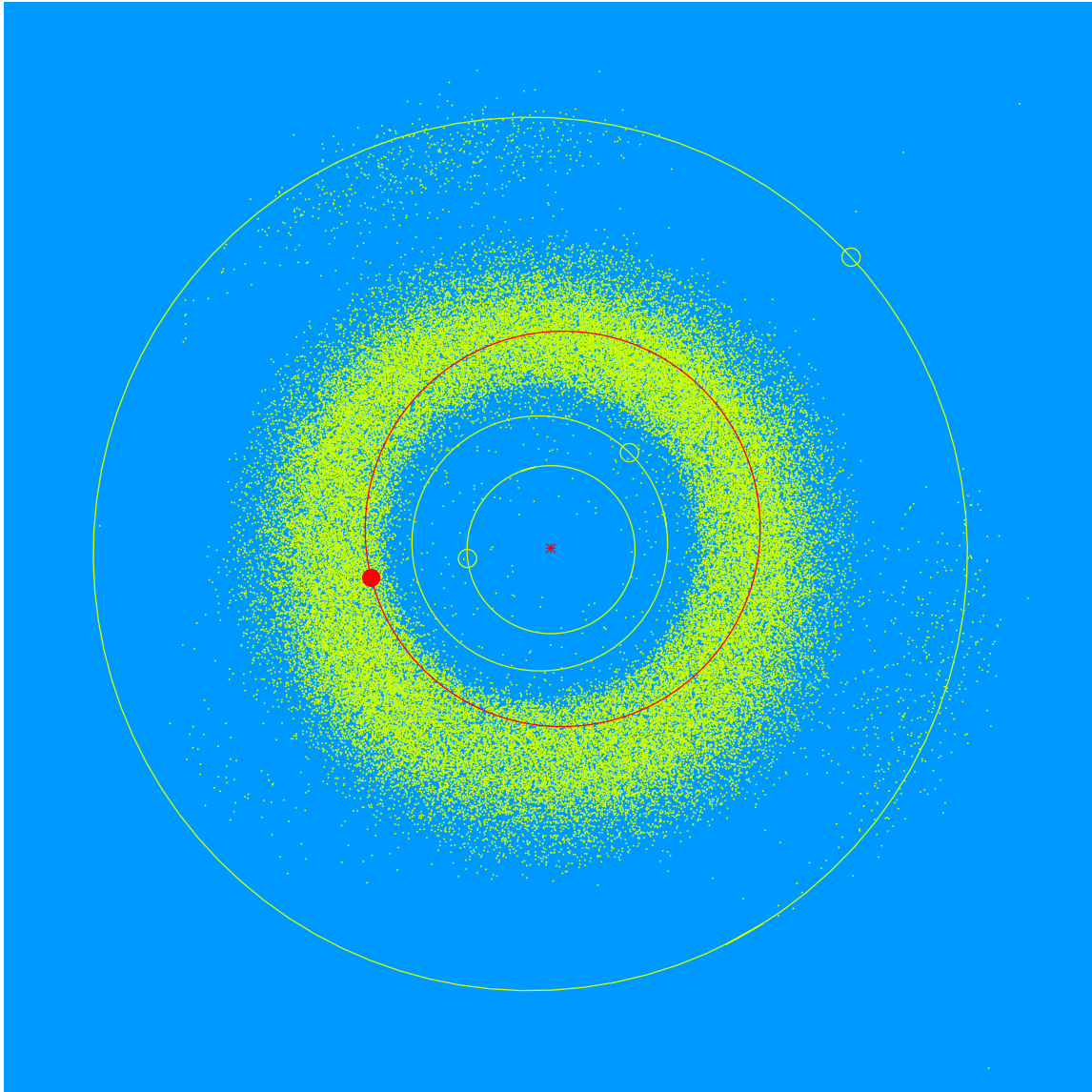


(30113 Kylerkuehn = 2000 FM₂₆)

Discovered 2000 Mar. 27 by the Lowell Observatory Near-Earth Object Search at the Anderson Mesa Station.

Kyler Kuehn (b.1976) is the Director of Technology at Lowell Observatory, USA. He is the team lead for construction, maintenance, and operation of astronomical facilities and instruments. He has contributed to several international research projects including the IceCube Neutrino Observatory.



Semimajor axis	2.37 AU
Eccentricity	0.112
Inclination	4.87 deg
Diameter	2–3 km