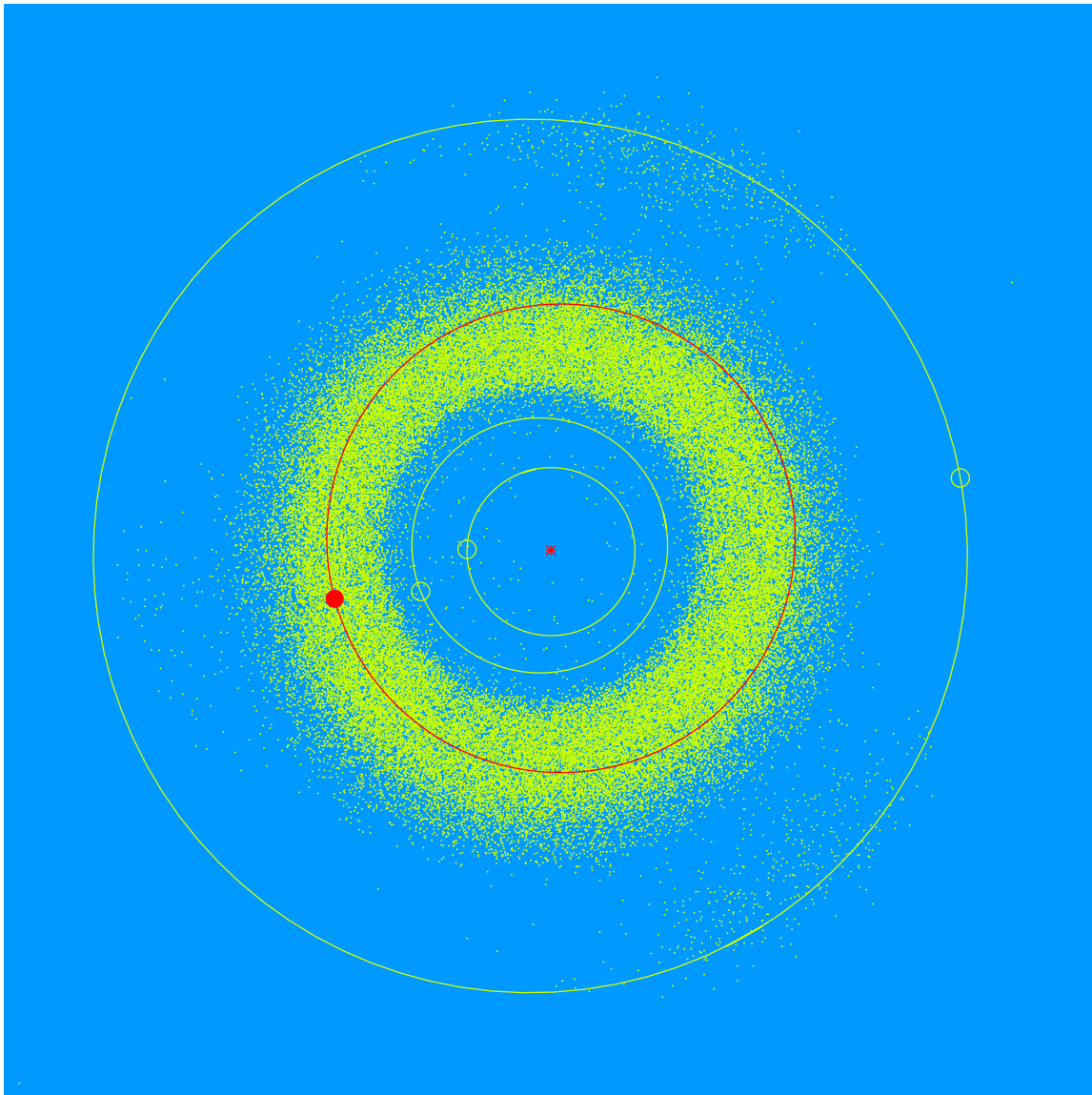


(29844) Millette = 1999 FM₁₉ Discovered 1999 Mar. 22 by the Lowell Observatory Near-Earth Object Search at the Anderson Mesa Station.

Christopher Millette, Sr. (b. 1964) is a Managing Director of a capital management firm and married to Erica A. Broman, Trustee Designate of Lowell Observatory. Chris has donated generously of his time and talent in providing advice to both Erica and the current Sole Trustee. He has spent many hours volunteering at Observatory events.



Semimajor axis	2.79 AU
Eccentricity	0.067
Inclination	3.18 deg
Diameter	4–5 km