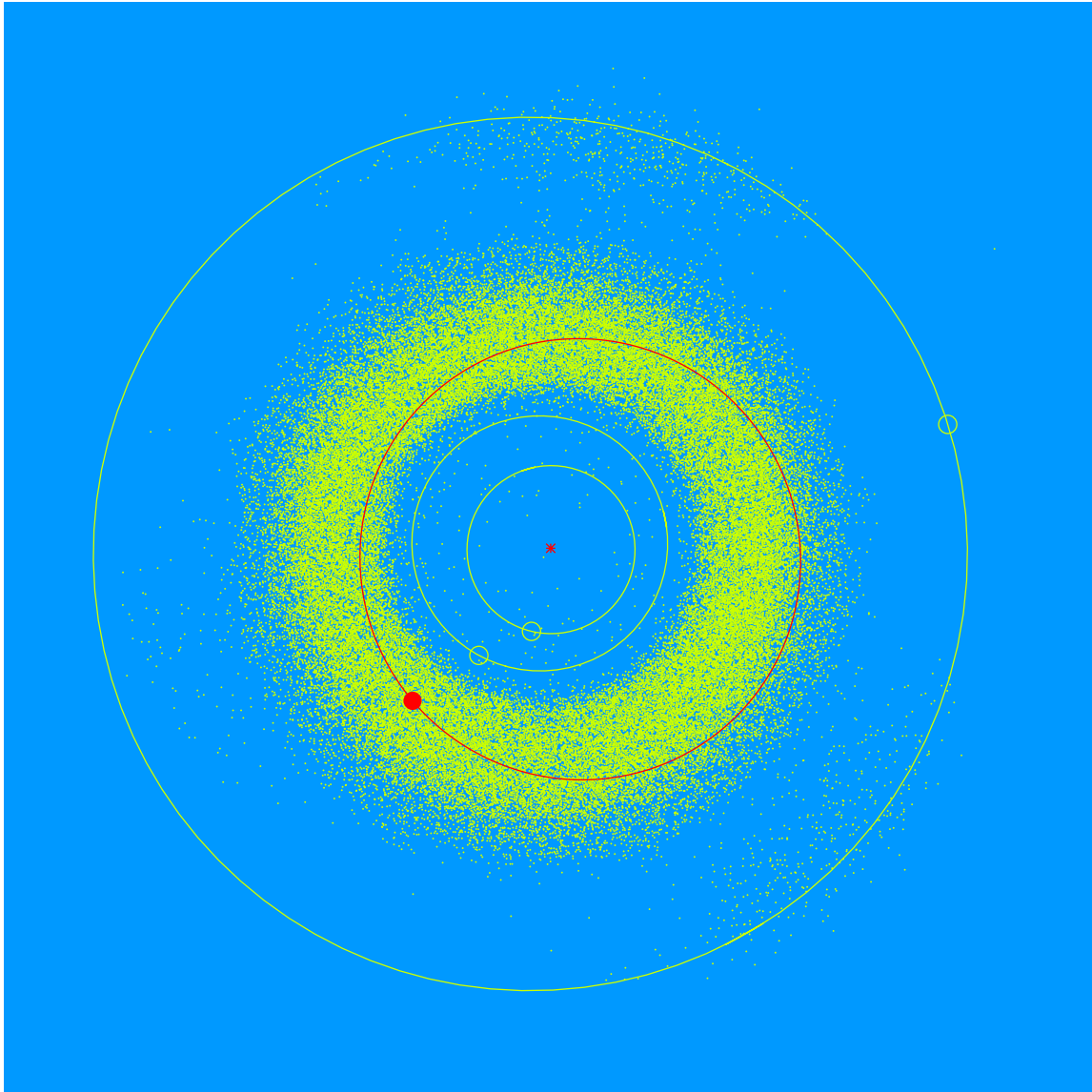


(29975 Racheledelstein = 1999 LQ₃₂)

Discovered 1999 Jun. 08 by the Lowell Observatory Near-Earth Object Search at the Anderson Mesa Station.

Rachel Edelstein (b. 1964) is the Annual Giving Officer for Lowell Observatory, USA. She communicates the greatest needs of the observatory to members and donors, guiding them through the gift-giving process. She enhances the Lowell experience through reporting, engagement, and stewardship.



Semimajor axis	2.65 AU
Eccentricity	0.142
Inclination	7.76 deg
Diameter	4–5 km