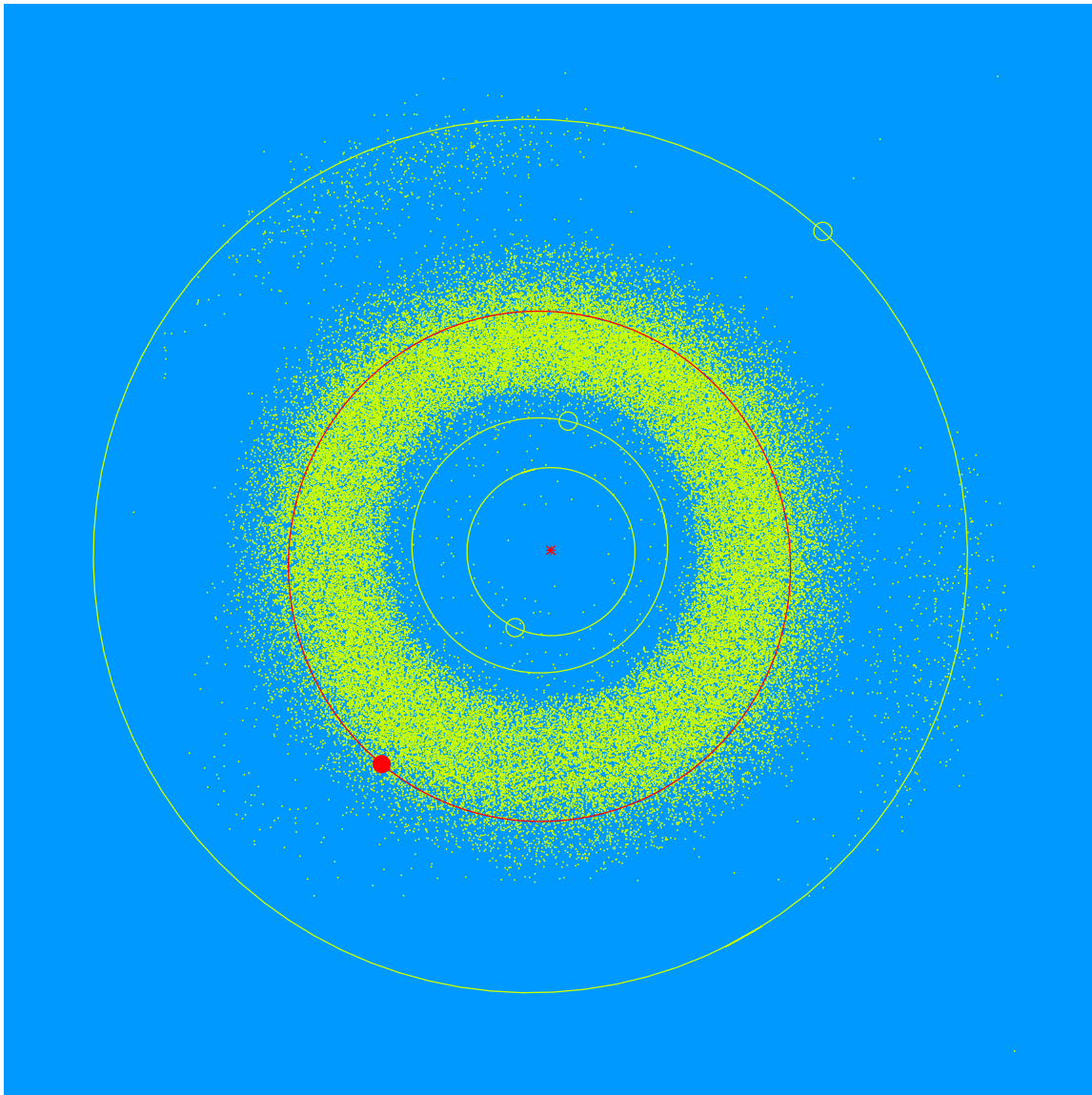


(28889) Turrentine = 2000 KQ₆₃ Discovered 2000 May 26 by the Lowell Observatory Near-Earth Object Search at the Anderson Mesa Station.

Kathryn Turrentine (b.1998) is an Educator at Lowell Observatory, USA. She engages with guests giving walking tours and talks about astronomical topics. Operating telescopes, she has excited visitors with views of the night sky. She has also worked as a Safety Tech at the Lowell Discovery Telescope.



Semimajor axis	3.04 AU
Eccentricity	0.087
Inclination	10.39 deg
Diameter	4–5 km