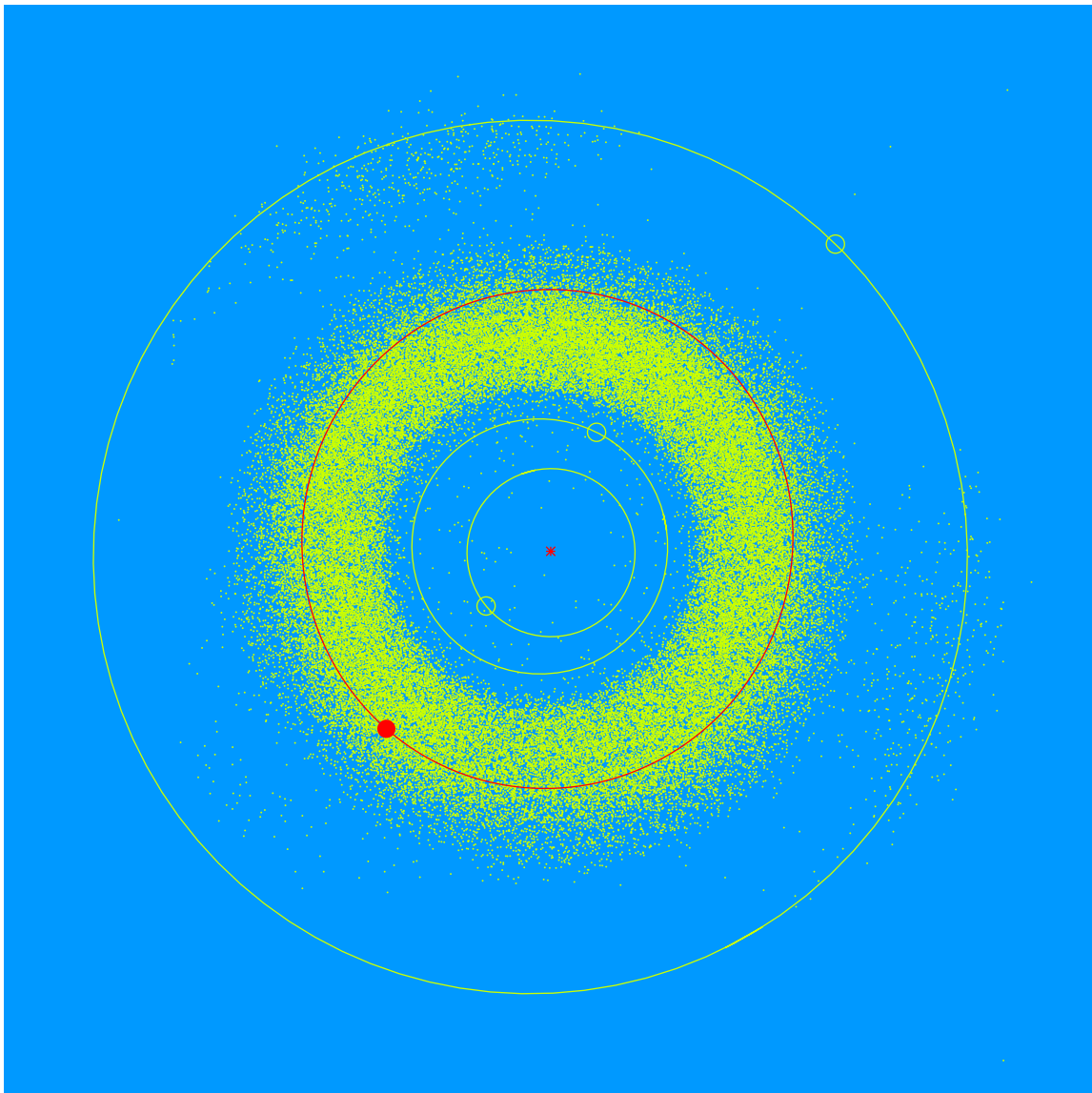


(30300 Waagen = 2000 HF₈₆)

Discovered 2000 Apr. 30 by the Lowell Observatory Near-Earth Object Search at the Anderson Mesa Station.

Elizabeth O. Waagen (b. 1956) is an American astronomer who helped thousands of amateur astronomers realize their dream of contributing to astronomy. Joining the AAVSO in 1979, she advanced to Senior Technical Assistant and once served as Interim Director. Throughout her career she sustained the organization's mission, programs, and data collection.



Semimajor axis	2.97 AU
Eccentricity	0.053
Inclination	10.81 deg
Diameter	3–4 km