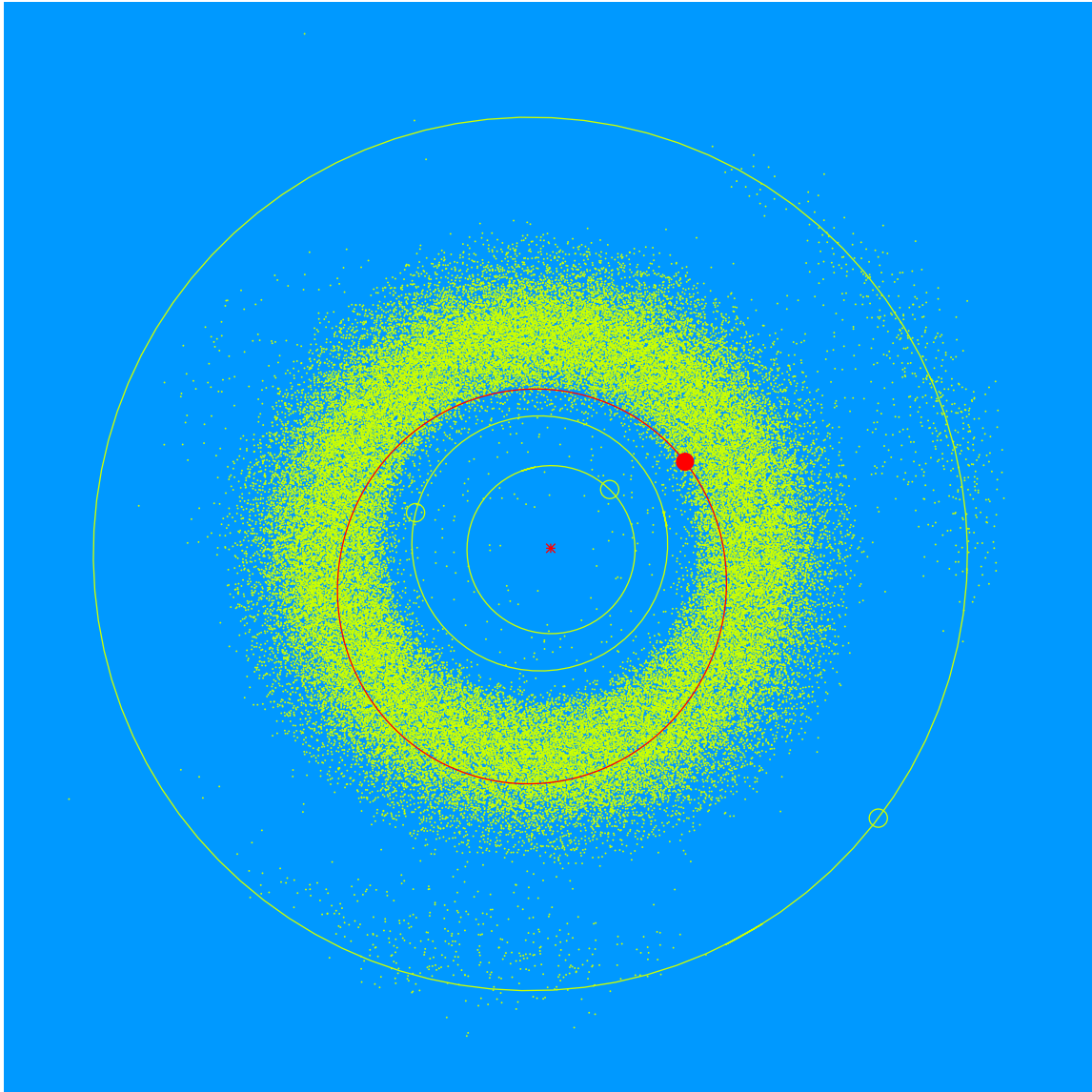


(19122) Amandabosh = 1985 VF₁

Discovered 1985 Nov. 7 by E. Bowell at the Anderson Mesa Station of the Lowell Observatory.

Amanda S. Bosh (b. 1965) is a lecturer in the Department of Earth, Atmospheric, and Planetary Sciences at the Massachusetts Institute of Technology. An expert in planetary occultations, her research includes the properties of Saturn's rings and the atmospheres of Triton and Pluto.



Semimajor axis	2.36 AU
Eccentricity	0.214
Inclination	1.22 deg
Diameter	3–4 km