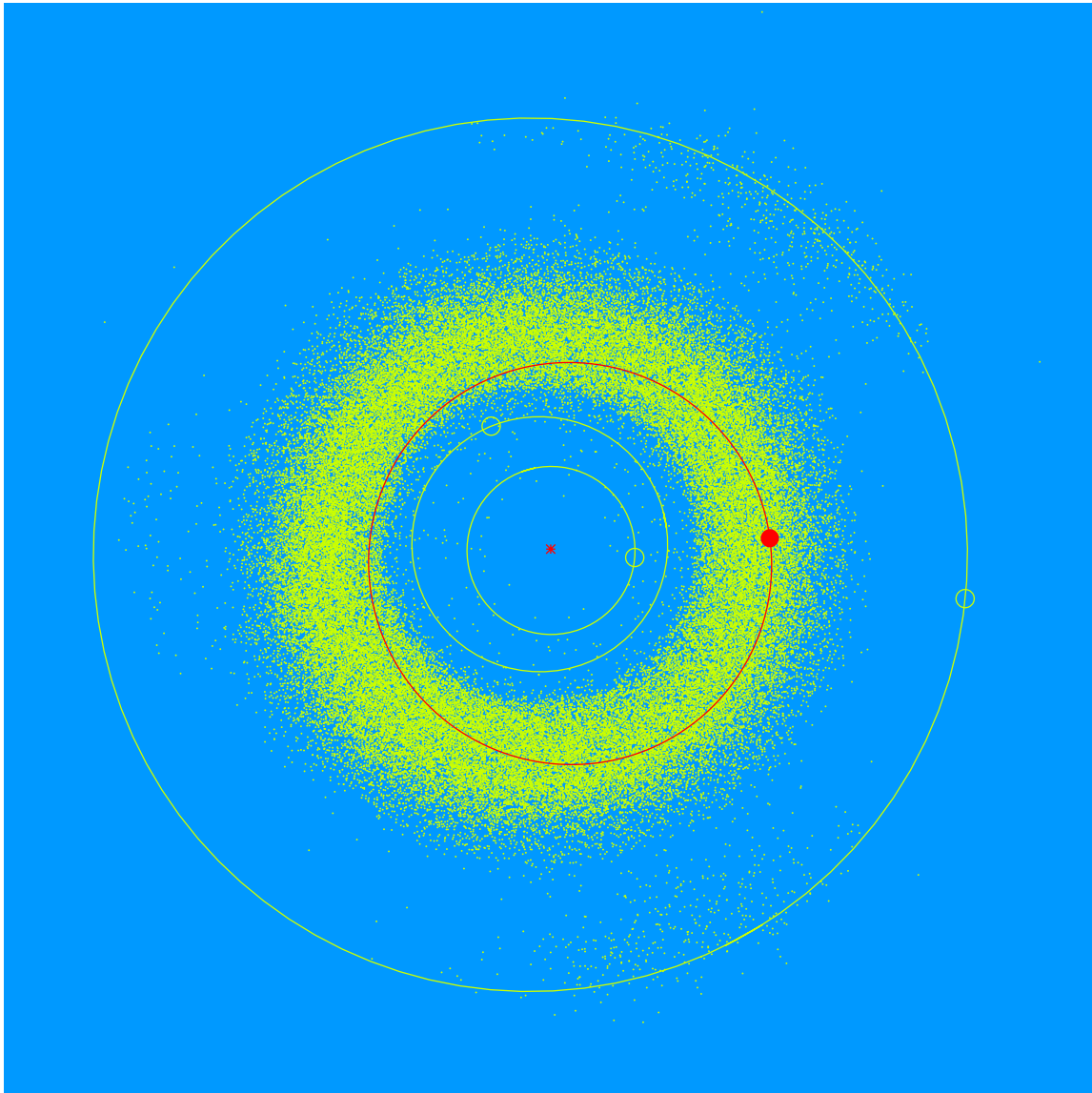


(27062) Brookeminer = 1998 SJ₅₈

Discovered 1998 Sep. 17 by the Lowell Observatory Near-Earth Object Search at the Anderson Mesa Station.

Dr. Brooke Miner (b. 1941) is an astrophysicist and a member of Lowell Observatory's Advisory Board sharing her time and talent. She is a member of Lowell's Technology Committee.



Semimajor axis	2.90 AU
Eccentricity	0.122
Inclination	1.63 deg
Diameter	2–4 km