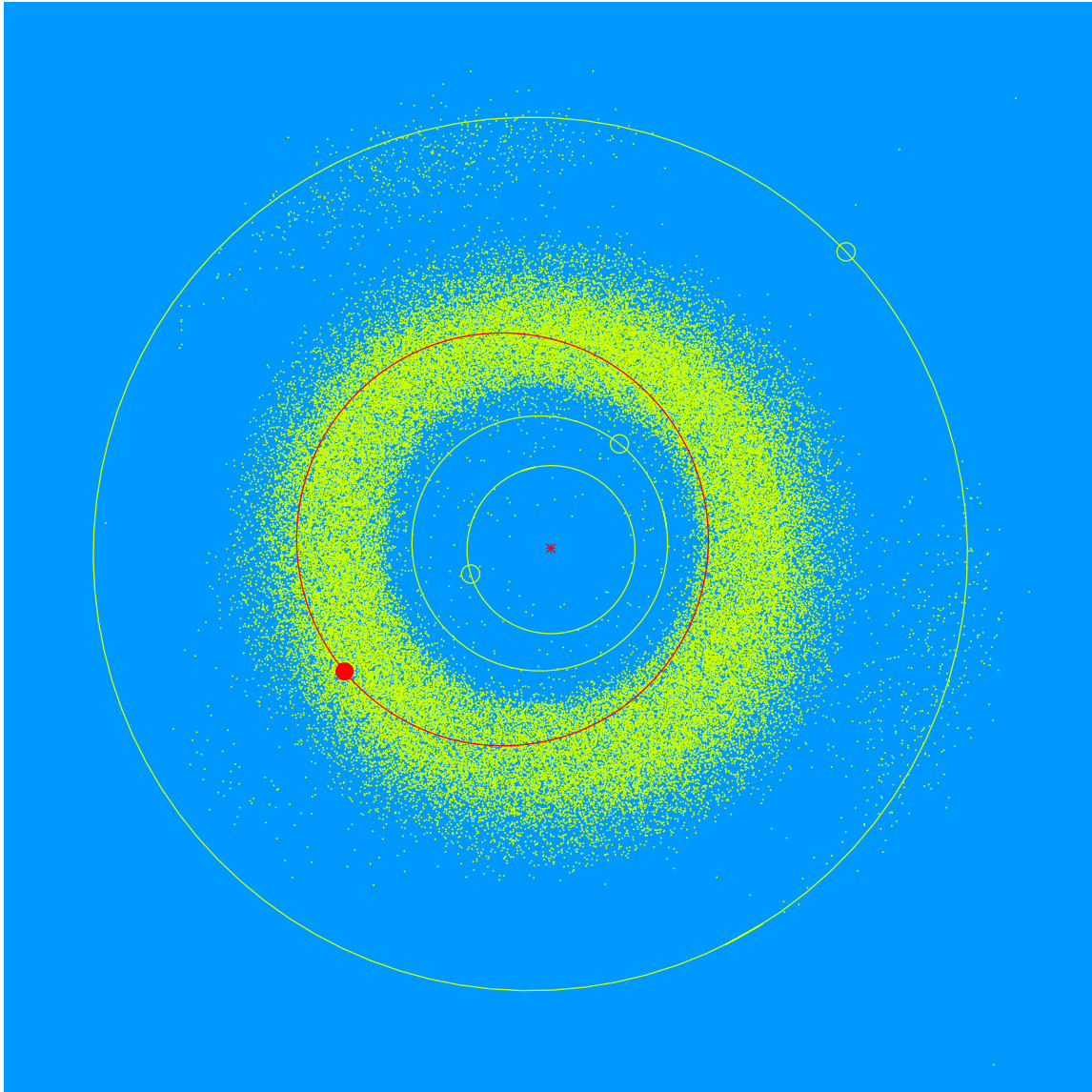


(43305) Camillebibles = 2000 GH<sub>142</sub>

Discovered 2000 Apr. 07 by the Lowell Observatory Near-Earth Object Search at the Anderson Mesa Station.

Camille D. Bibles (b. 1961) is a US Magistrate Judge who had a successful career litigating cases in state, federal and international courts. Her legal career began in Northern Arizona, and she returned due to her passion for nature and the night sky. Camille is a Trustee of the Lowell Observatory Foundation.



Semimajor axis	2.53 AU
Eccentricity	0.253
Inclination	14.21 deg
Diameter	3–5 km