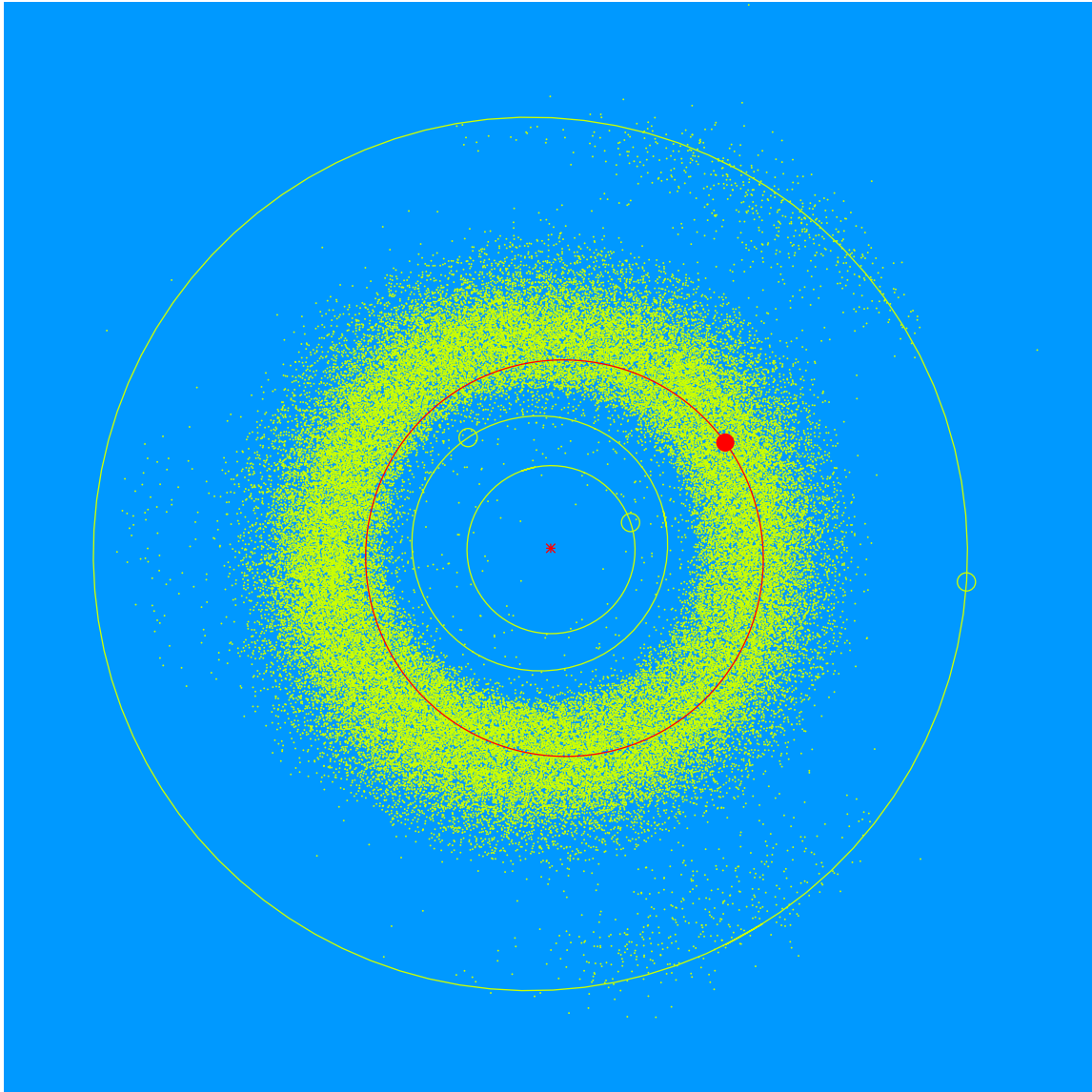


(28147) Colbath = 1998 TD<sub>32</sub>

Discovered 1998 Oct. 11 by the Lowell Observatory Near-Earth Object Search at the Anderson Mesa Station.

G. Kent Colbath (b. 1953) Kent and his late wife Jill have been longtime supporters of Lowell Observatory for the past twenty years. Kent has had a varied career in geology, and was Chair of Earth Science at Cerritos Community College. Kent is a die-hard science enthusiast and he serves on Lowell Observatory's Advisory Board.



Semimajor axis	2.37 AU
Eccentricity	0.088
Inclination	4.22 deg
Diameter	2–3 km