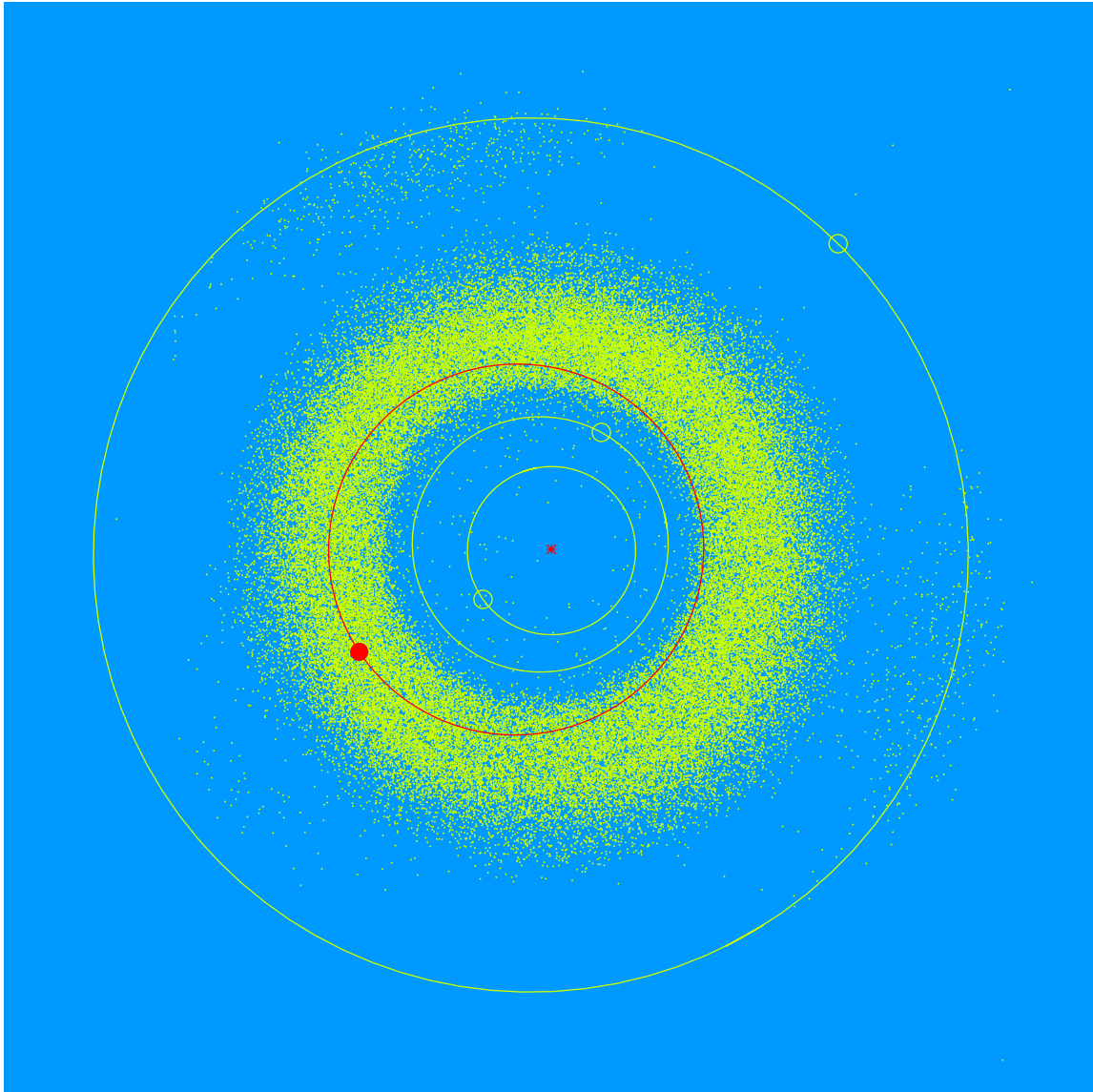


(28794) Crowley = 2000 HG₆₄

Discovered 2000 Apr. 26 by the Lowell Observatory Near-Earth Object Search at the Anderson Mesa Station.

Leo Crowley (b. 1942) is a long time member of Lowell Observatory's Advisory Board. Leo offers his time, talent and treasure serving on Lowell's Executive Committee and as Chair of Lowell's Audit Committee. Leo is always willing to help Lowell whenever and wherever he can.



| | |
|----------------|----------|
| Semimajor axis | 2.25 AU |
| Eccentricity | 0.188 |
| Inclination | 7.44 deg |
| Diameter | 2–3 km |