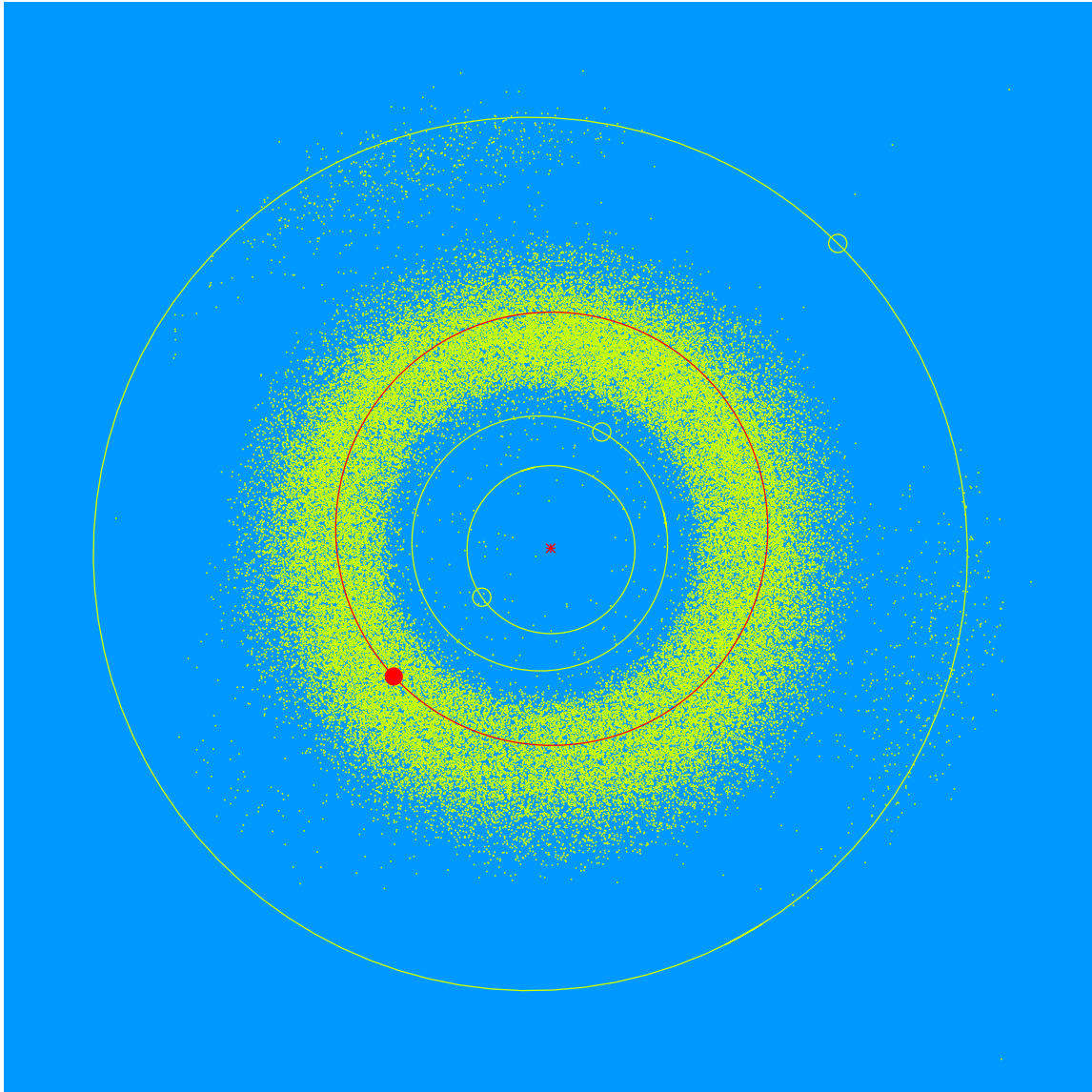


(28793) Donaldpaul = 2000 HM<sub>61</sub>

Discovered 2000 Apr. 25 by the Lowell Observatory Near-Earth Object Search at the Anderson Mesa Station.

Dr. Donald Paul (b. 1946) is long time member of Lowell Observatory's Advisory Board. Don gives his time, talent, and treasure to Lowell Observatory helping Lowell fulfill its mission. Don supported the Giovale Open Deck Observatory with a TEC telescope which enhances visitors views of our solar system.



Semimajor axis	2.58 AU
Eccentricity	0.088
Inclination	3.09 deg
Diameter	3–4 km