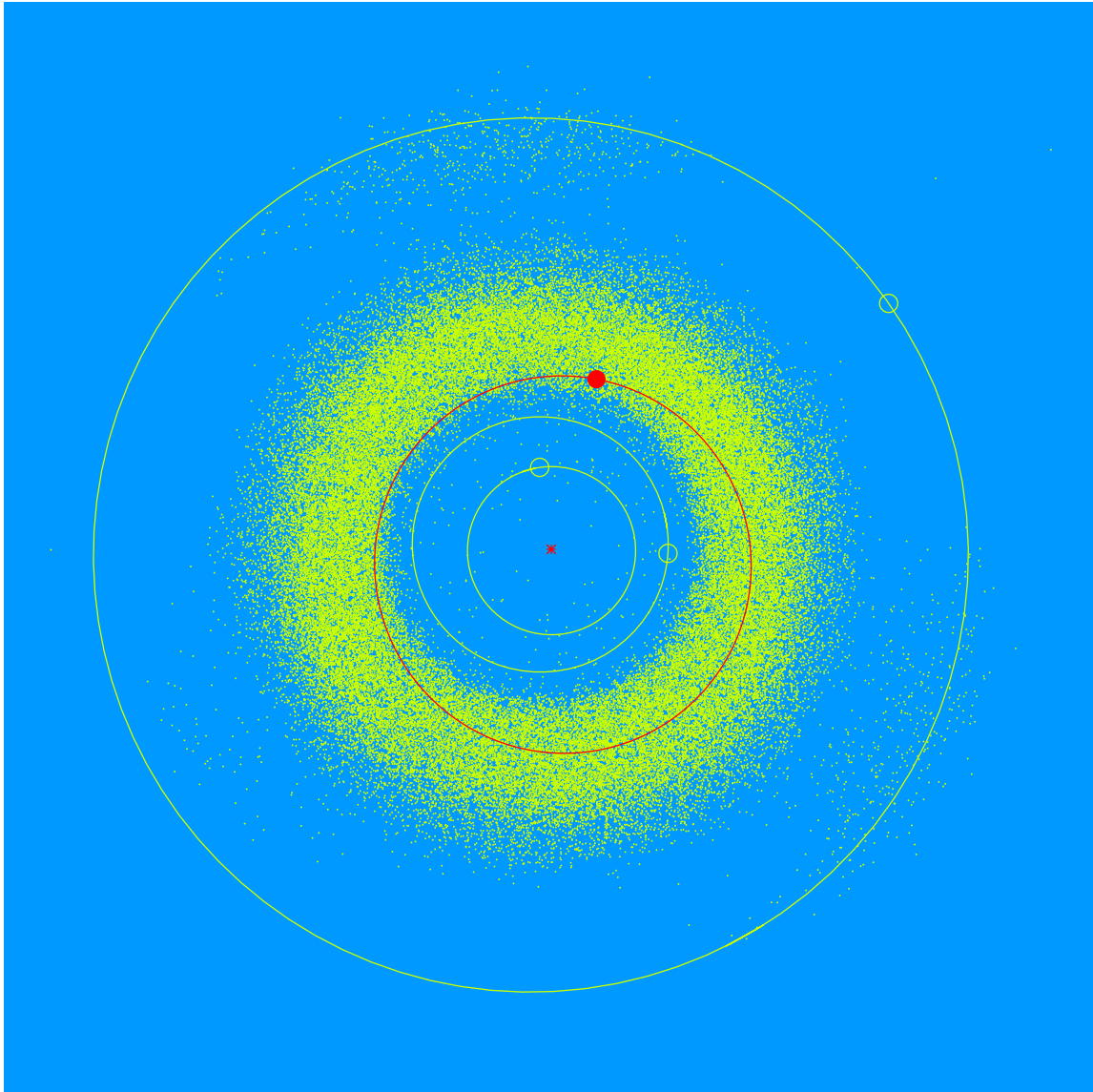


(26438) Durling = 1999 YE₁₃

Discovered 1999 Dec. 30 by the Lowell Observatory Near-Earth Object Search at the Anderson Mesa Station.

Susanne Durling (b. 1932) is a long time member of Lowell Observatory's Advisory Board. As a member of the Board Sue gives of her time and talent. She also serves on the Putnam Collection Center Committee, which advises on the preservation of Lowell's collection of artifacts.



Semimajor axis	2.25 AU
Eccentricity	0.103
Inclination	3.88 deg
Diameter	2–3 km