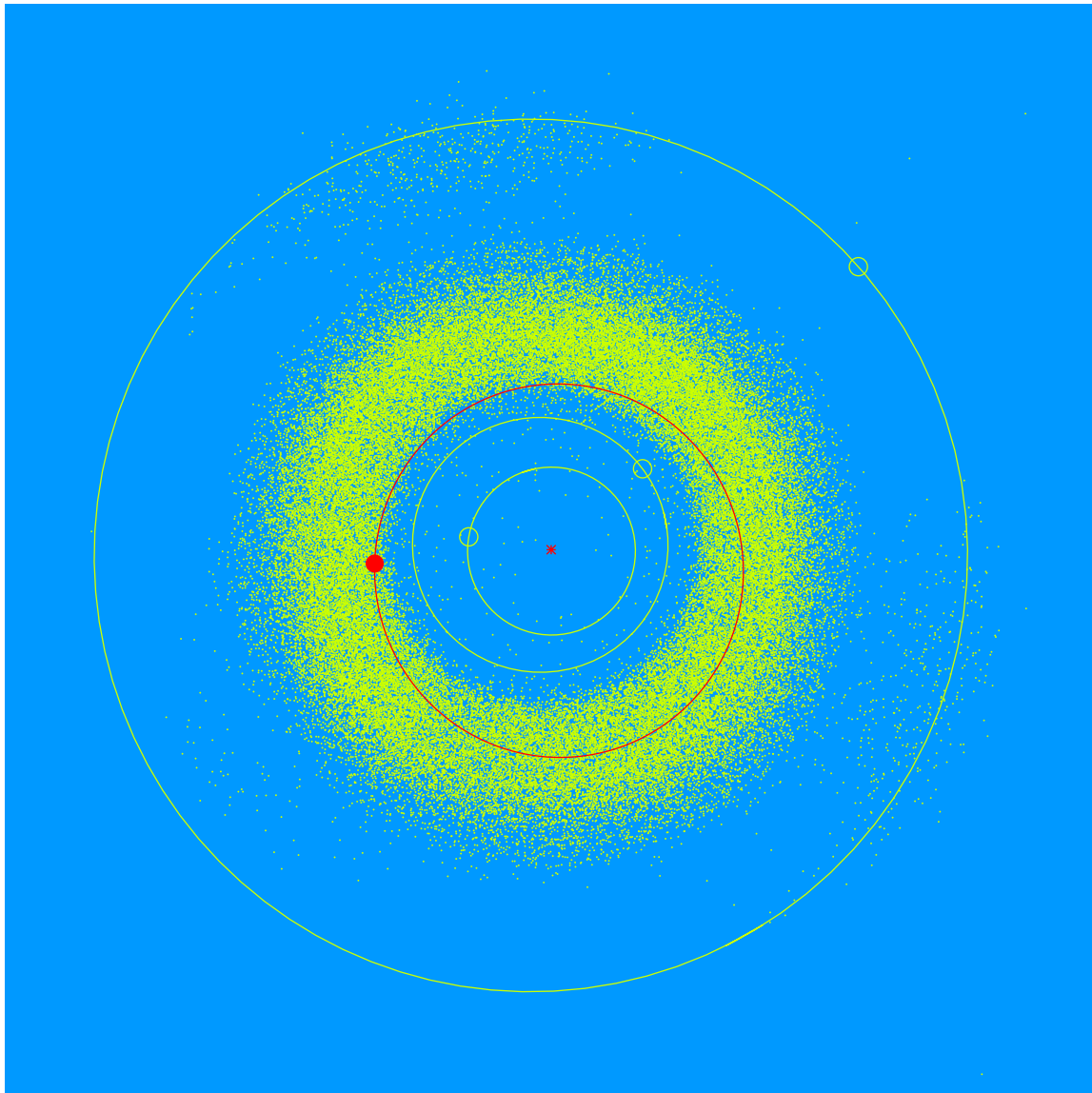


(28581) Dyerlytle = 2000 ER₁₀₅

Discovered 2000 Mar. 11 by the Lowell Observatory Near-Earth Object Search at the Anderson Mesa Station.

Dyer Lytle (b. 1956) is a Software Engineer at Lowell Observatory, crucial to maintaining software used by all observers at the 4.3m Lowell Discovery Telescope. He was previously a Software Engineer for instruments aboard NASA's Cassini spacecraft, and was a Scientific Programmer with NOAO's IRAF group.



Semimajor axis	2.26 AU
Eccentricity	0.120
Inclination	6.95 deg
Diameter	1–2 km