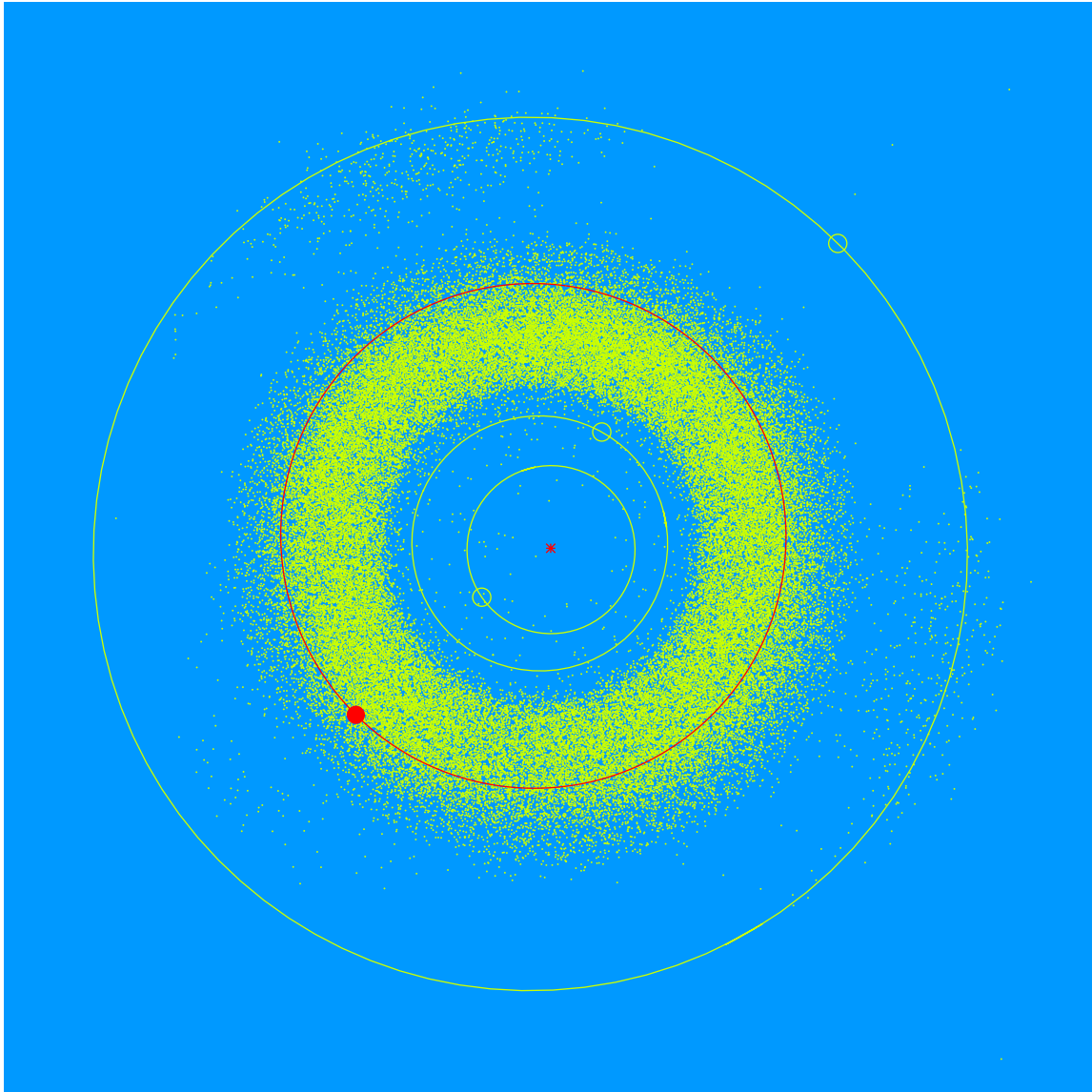


(28791) Edithsykeslowell = 2000 HW₅₉

Discovered 2000 Apr. 25 by the Lowell Observatory Near-Earth Object Search at the Anderson Mesa Station.

Edith Sykes Lowell (b. 1927), with her husband David, have been supporters of Lowell Observatory. Edith is the granddaughter of Godfrey Sykes. The Sykes brothers (Stanley and Godfrey) built the dome which houses Lowell's 24-inch historic refractor telescope.



Semimajor axis	3.01 AU
Eccentricity	0.085
Inclination	1.55 deg
Diameter	2–3 km