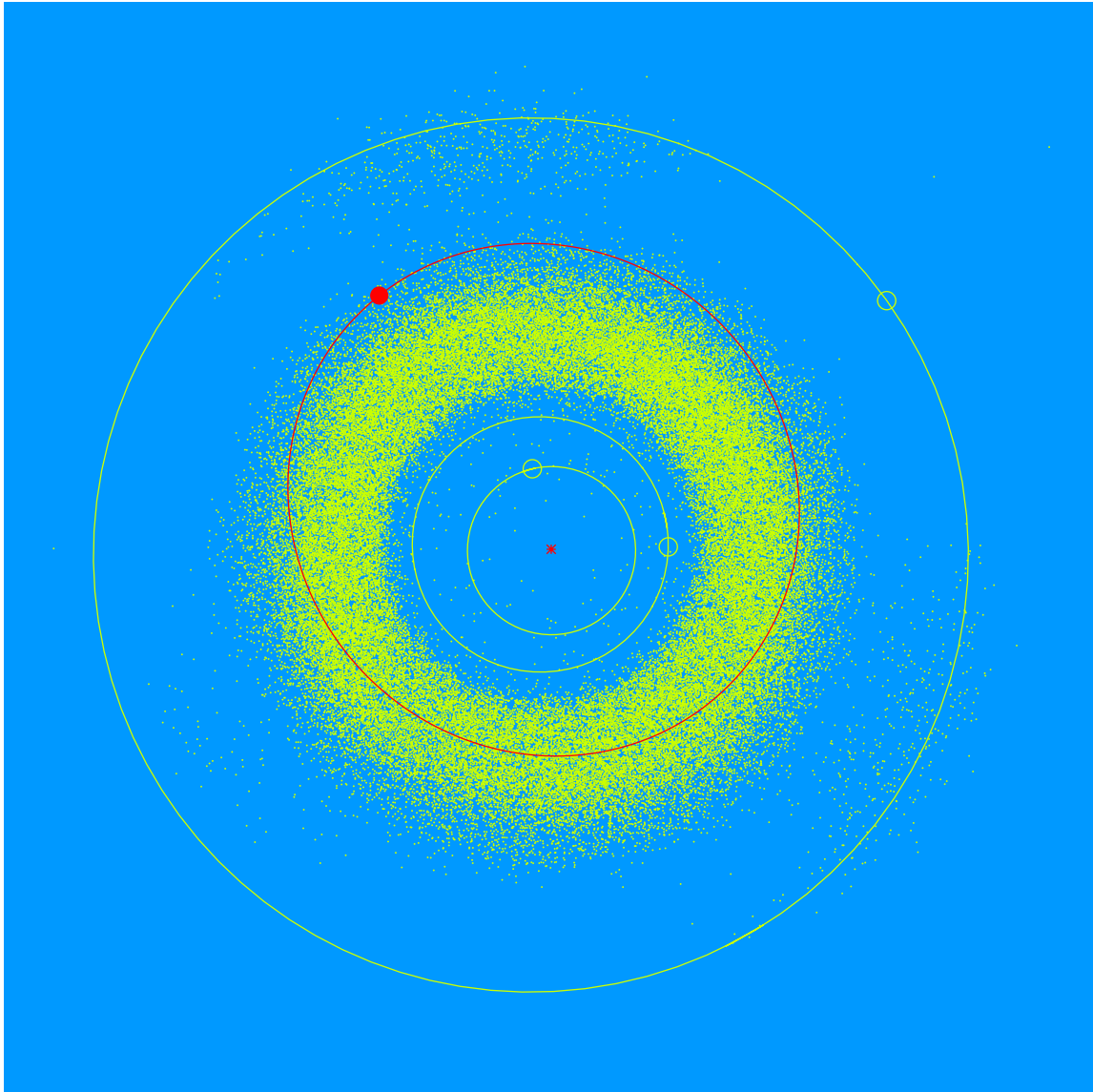


(26485) Edwinpost = 2000 AD₂₃₁

Discovered 2000 Jan. 4 by the Lowell Observatory Near-Earth Object Search at the Anderson Mesa Station.

Edwin Post (b. 1953) is a member of Lowell Observatory's Advisory Board. Ed supports Lowell Observatory in its mission to bring astronomical research results to the general public. Ed is a software engineer who specializes in graphic design and animation.



Semimajor axis	3.15 AU
Eccentricity	0.192
Inclination	17.46 deg
Diameter	5–7 km