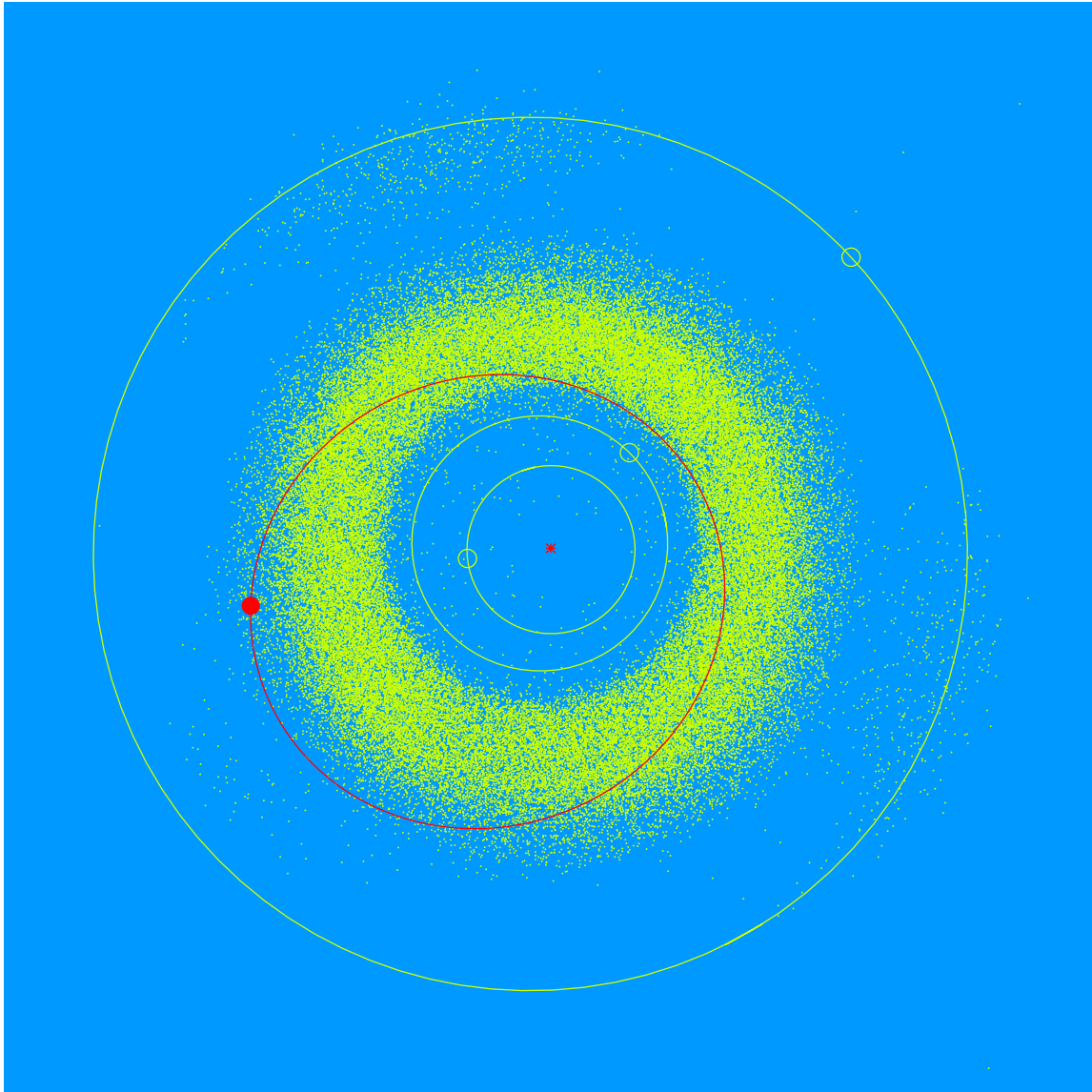


(26604) Ensign = 2000 FO₂₅

Discovered 2000 Mar. 27 by the Lowell Observatory Near-Earth Object Search at the Anderson Mesa Station.

Thomas Ensign (b. 1941) is a long time member of the Lowell Advisory Board. Tom is a member of the Executive Committee and the Chair of the Marketing and Public Relations Committee. Tom offers his time, talent and treasure in supporting Lowell's mission and Lowell's science camp for kids.



Semimajor axis	2.89 AU
Eccentricity	0.351
Inclination	15.12 deg
Diameter	5–8 km