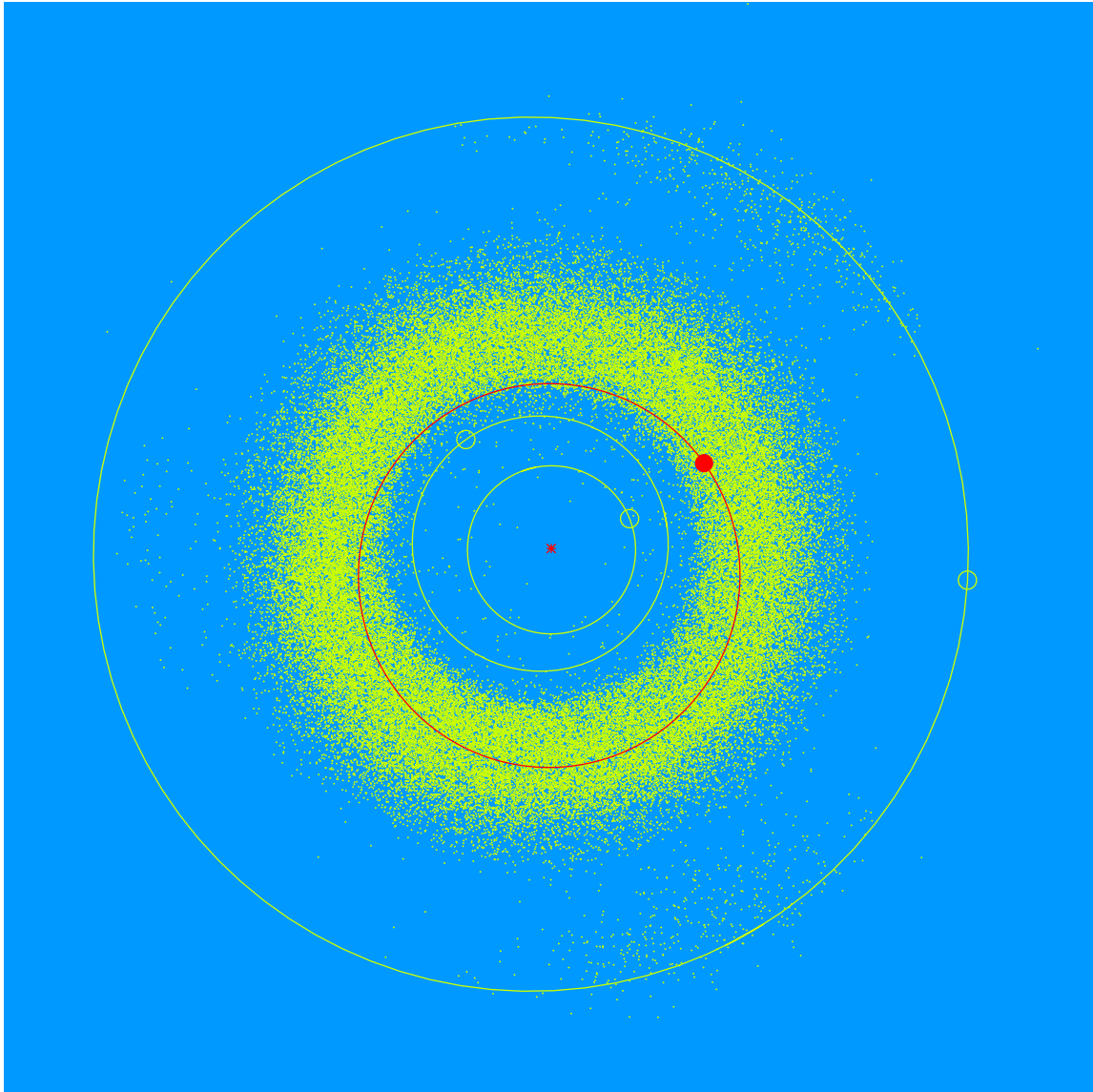


(28148) Fuentes = 1998 TL<sub>34</sub>

Discovered 1998 Oct. 14 by the Lowell Observatory Near-Earth Object Search at the Anderson Mesa Station.

Angel Fuentes (b. 1983) is Dean of Academic and Student Affairs for the Math and Sciences Division at Laney College in California. Angel supports Lowell Observatory's mission to make astronomical phenomenon accessible to the public. Angel serves on Lowell Observatory's Advisory Board and is the Co-Chair of Lowell's Education and Outreach Committee.



Semimajor axis	2.29 AU
Eccentricity	0.142
Inclination	5.09 deg
Diameter	1-2 km