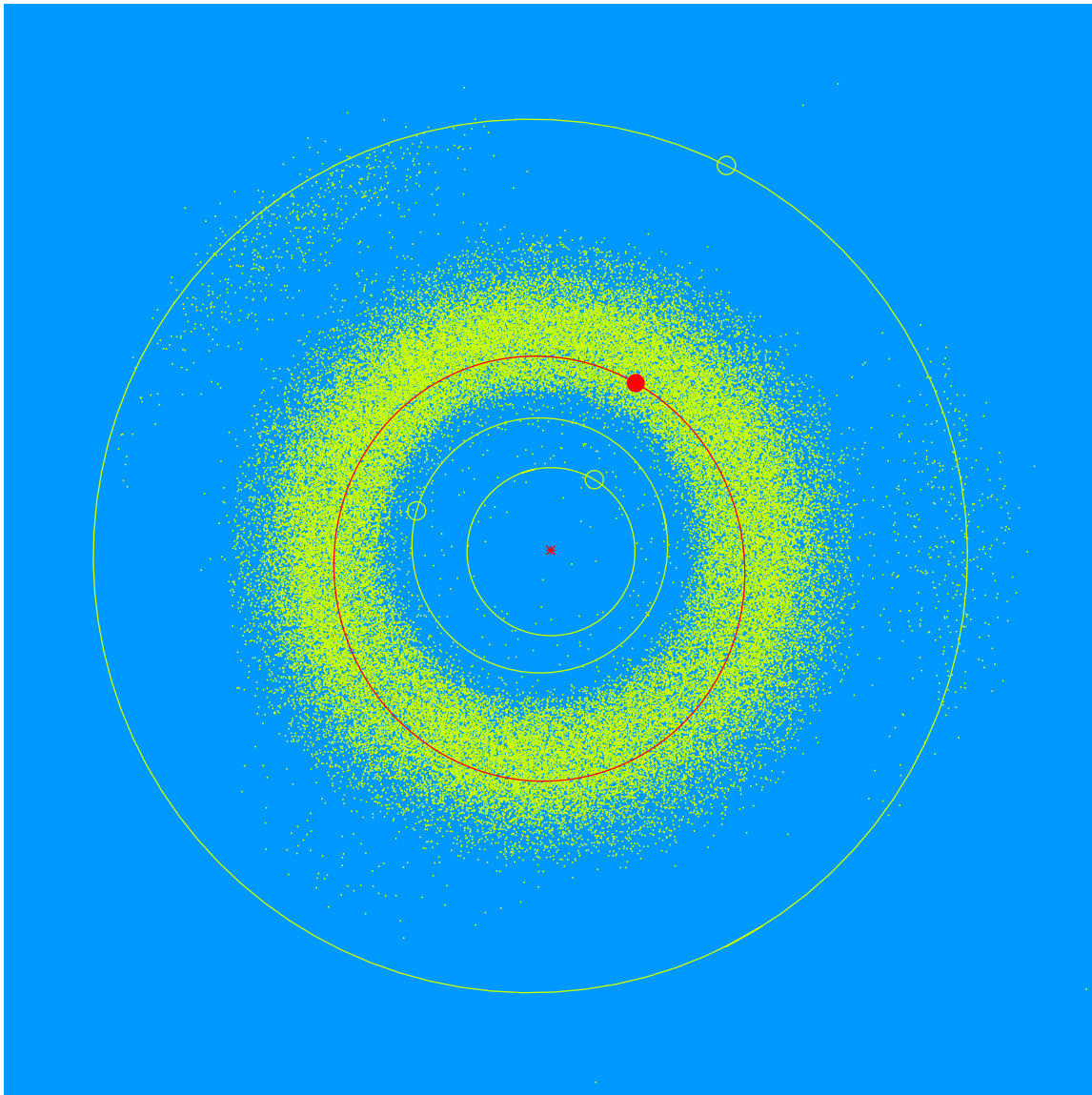


(41907) Jonathanford = 2000 WF<sub>137</sub> Discovered 2000 Nov. 20 by the Lowell Observatory Near-Earth Object Search at the Anderson Mesa Station.

Jonathan (Jon) Ford (b.1959) is a Senior Educator at Lowell Observatory. He serves as an American ambassador and guide to Lowell visitors, enthusiastically telling them historic stories of science discovery. He also teaches and trains new volunteers on telescope operation and the basics of science communication and interpretation.



Semimajor axis	2.54 AU
Eccentricity	0.103
Inclination	16.08 deg
Diameter	2–3 km