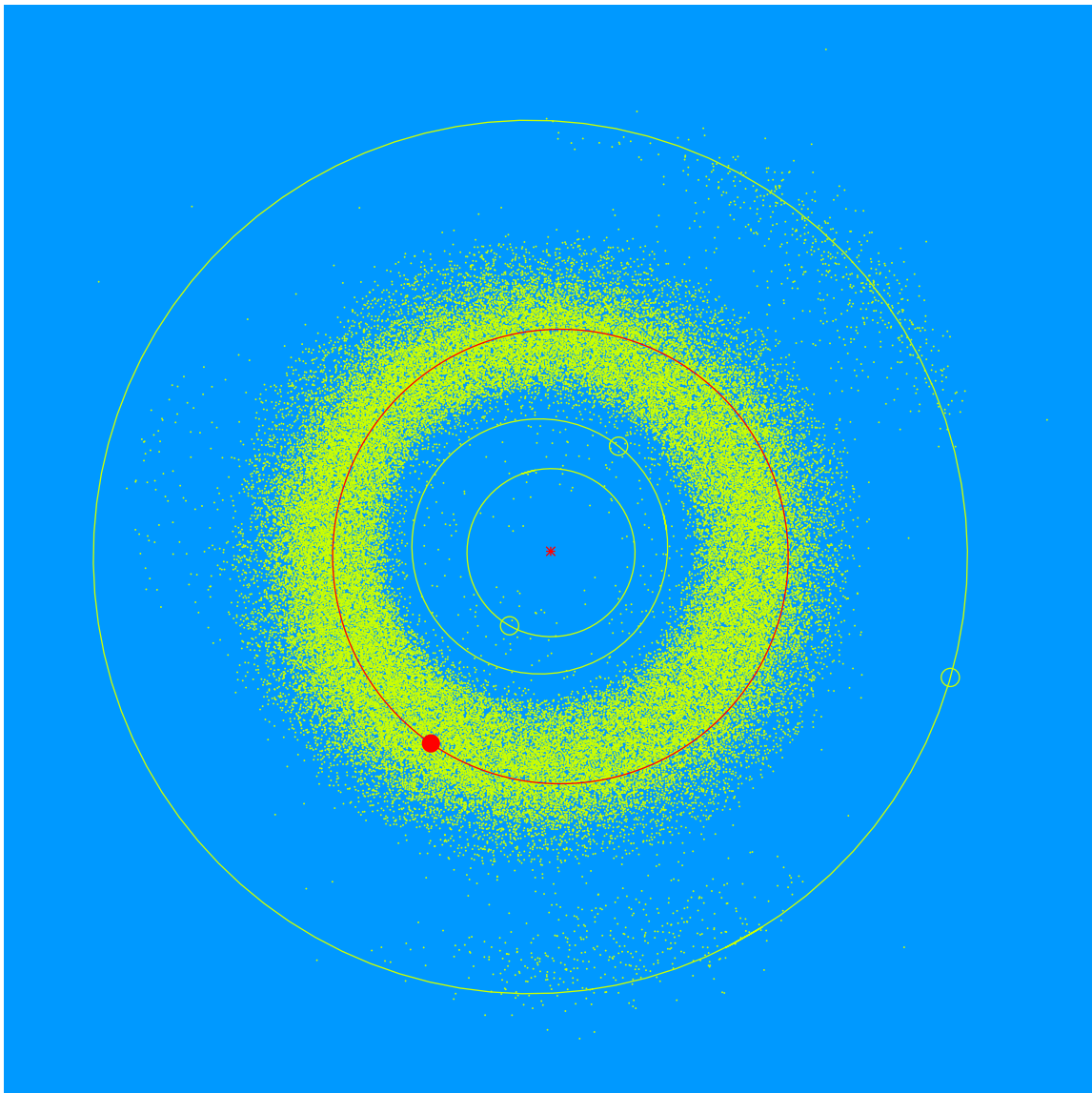


(28053) Kimberlyputnam = 1998 KE₄

Discovered 1998 May 22 by the Lowell Observatory Near-Earth Object Search at the Anderson Mesa Station.

Kimberly Putnam (b.1969) is the wife and partner of W. Lowell Putnam IV, Sole Trustee of Lowell Observatory. She manages many of the aspects of the Lowell Observatory Advisory Board's annual meeting. She applies her skills from her career in the travel industry to benefit the observatory's international travel to foreign observatories with supporters.



Semimajor axis	2.71 AU
Eccentricity	0.046
Inclination	3.60 deg
Diameter	3-4 km