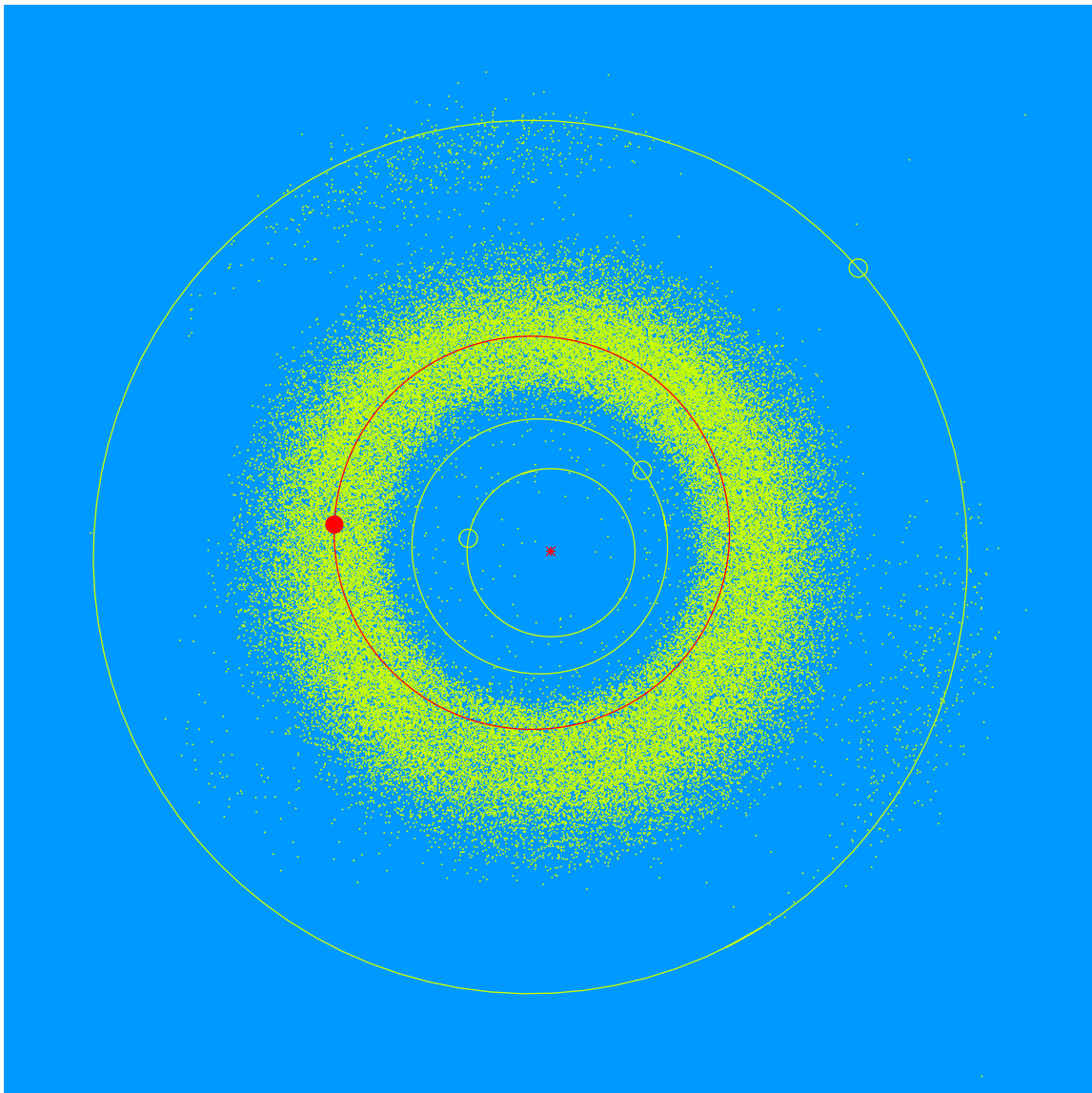


(28590) Kyledilger = 2000 EX<sub>126</sub>

Discovered 2000 Mar. 11 by the Lowell Observatory Near-Earth Object Search at the Anderson Mesa Station.

Kyle Dilger (b. 1986) shares his time and talent with Lowell Observatory, serving on the Observatory's Advisory Board and its Marketing Committee. Kyle became interested in Lowell Observatory after one visit. He quickly became involved, providing occasional meals for telescope operators and taking drone images of the Observatory's Mars Hill campus.



Semimajor axis	2.37 AU
Eccentricity	0.134
Inclination	8.18 deg
Diameter	2–3 km