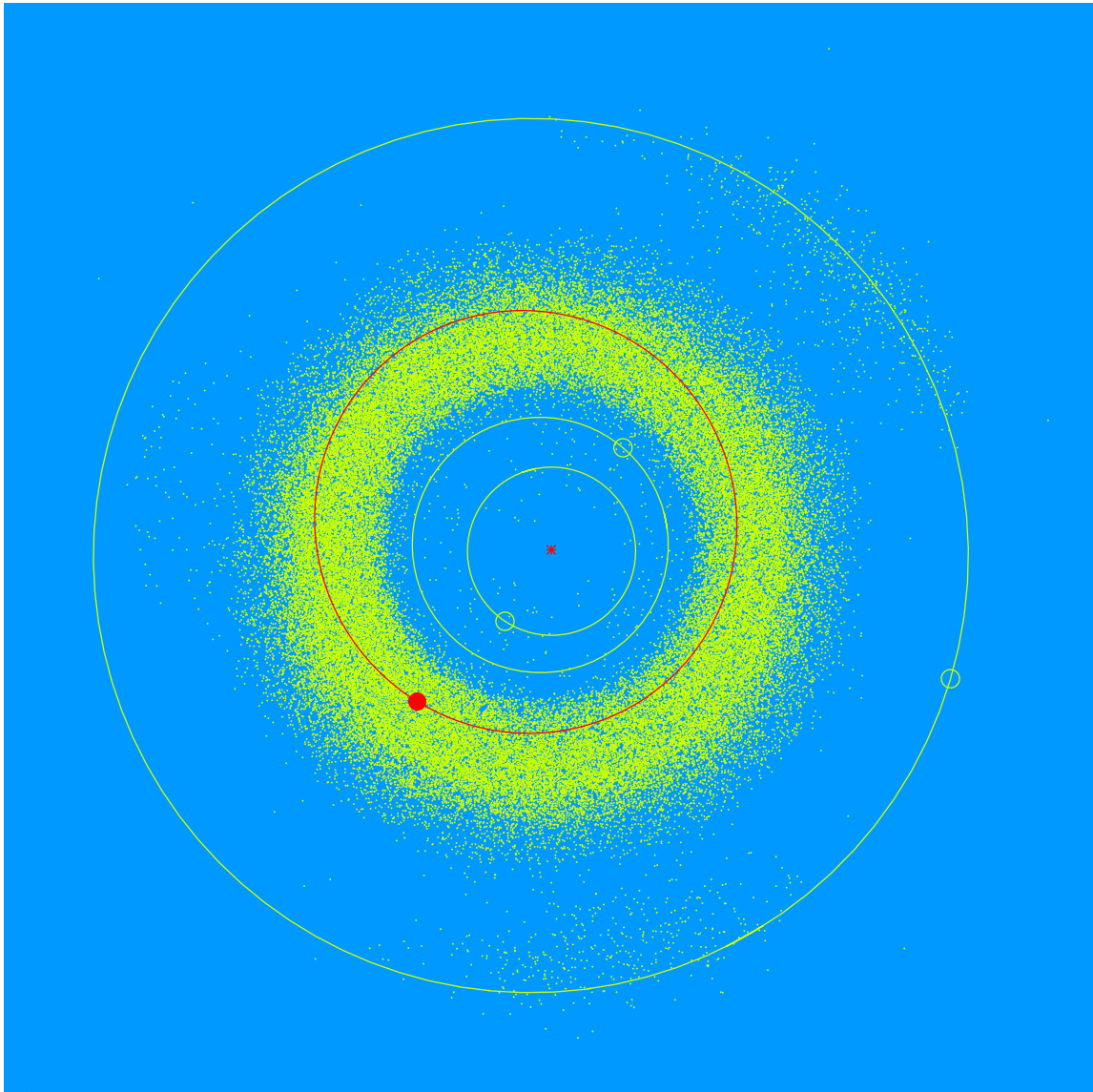


(28052) Lowellputnam = 1998 KP₁

Discovered 1998 May 18 by the Lowell Observatory Near-Earth Object Search at the Anderson Mesa Station.

W. Lowell Putnam IV (b.1954) is the 5th Sole Trustee of Lowell Observatory. He was involved in early-generation television traffic systems, holding senior software development and business analyst positions in the broadcast industry. Lowell Observatory's reputation as a research and educational organization has grown significantly under his leadership.



Semimajor axis	2.53 AU
Eccentricity	0.179
Inclination	1.23 deg
Diameter	2-3 km