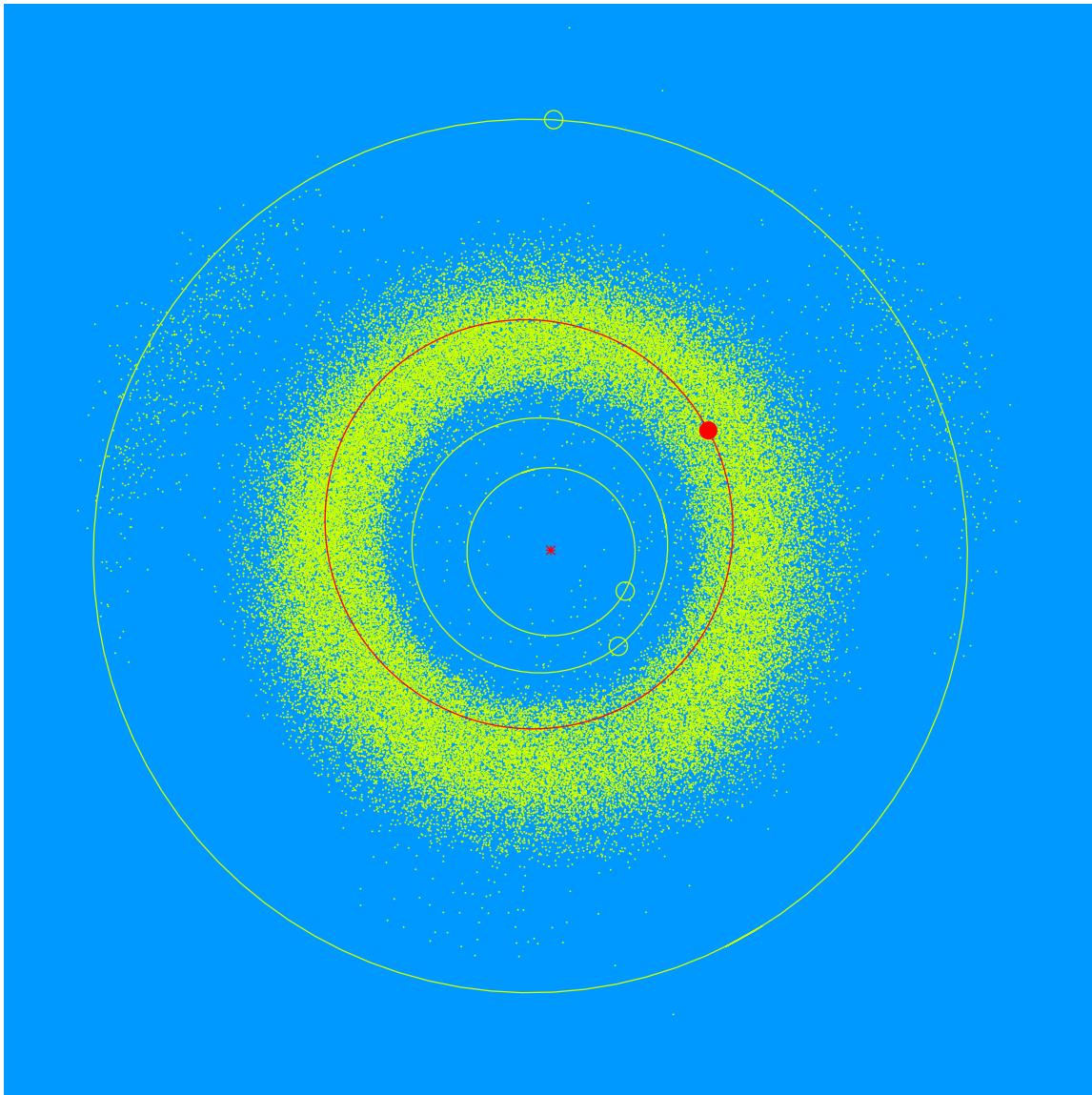


**(32619) Lynnsawyer = 2001 QC<sub>295</sub> Discovered 2001 Aug. 24 by the Lowell Observatory Near-Earth Object Search at the Anderson Mesa Station.**

**Lynn Sawyer (b. 1961) is the Philanthropy Assistant at Lowell Observatory located in the USA. She handles all of the donations and efficiently enters the data into our donor management software. She also provides general administrative support to the Philanthropy department.**



Semimajor axis	2.45 AU
Eccentricity	0.165
Inclination	5.97 deg
Diameter	2–3 km