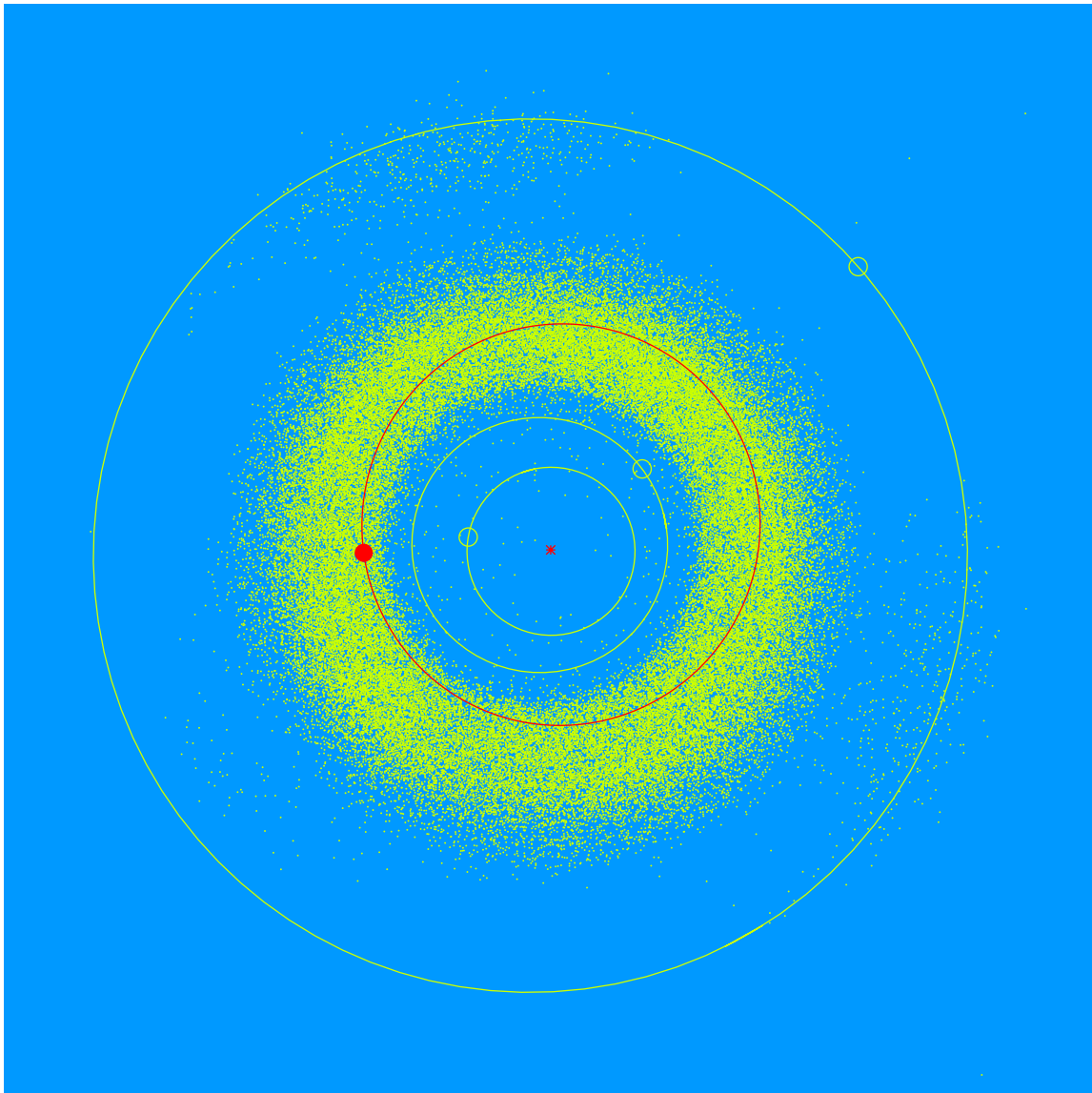


(30092) Menke = 2000 EB₁₃₅

Discovered 2000 Mar. 11 by the Lowell Observatory Near-Earth Object Search at the Anderson Mesa Station.

John Menke (b. 1940) is a trustee of the Lowell Observatory Foundation. His past professions have included physicist at the Bureau of Standards in Gaithersburg, politician, and staff scientist at the Mitre Corporation. In 1991, he and his wife Meg began an astronomical dome manufacturing business, which they ran until they retired in 2002.



Semimajor axis	2.39 AU
Eccentricity	0.133
Inclination	3.57 deg
Diameter	2–3 km