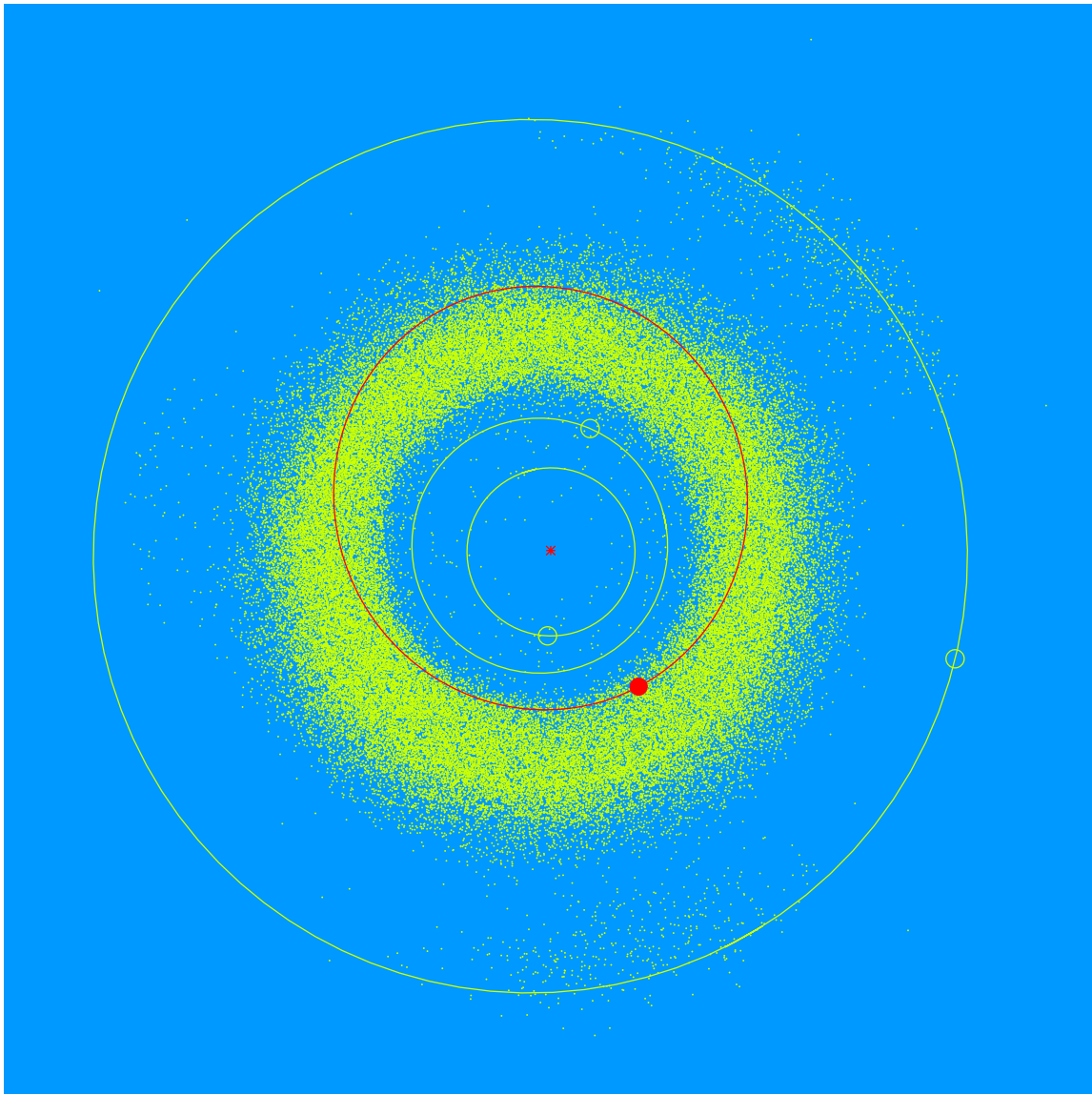


(44195) Michaelcordova = 1998 MW₇

Michael Cordova (b. 1956) had a career as an airline pilot in the US. During his career, he identified celestial objects for his colleagues in the cockpit. He was often surprised that they had no knowledge of the planets. Michael became a member of the Lowell Observatory Advisory Board in 2022.



Semimajor axis	2.54 AU
Eccentricity	0.225
Inclination	9.08 deg
Diameter	1-2 km