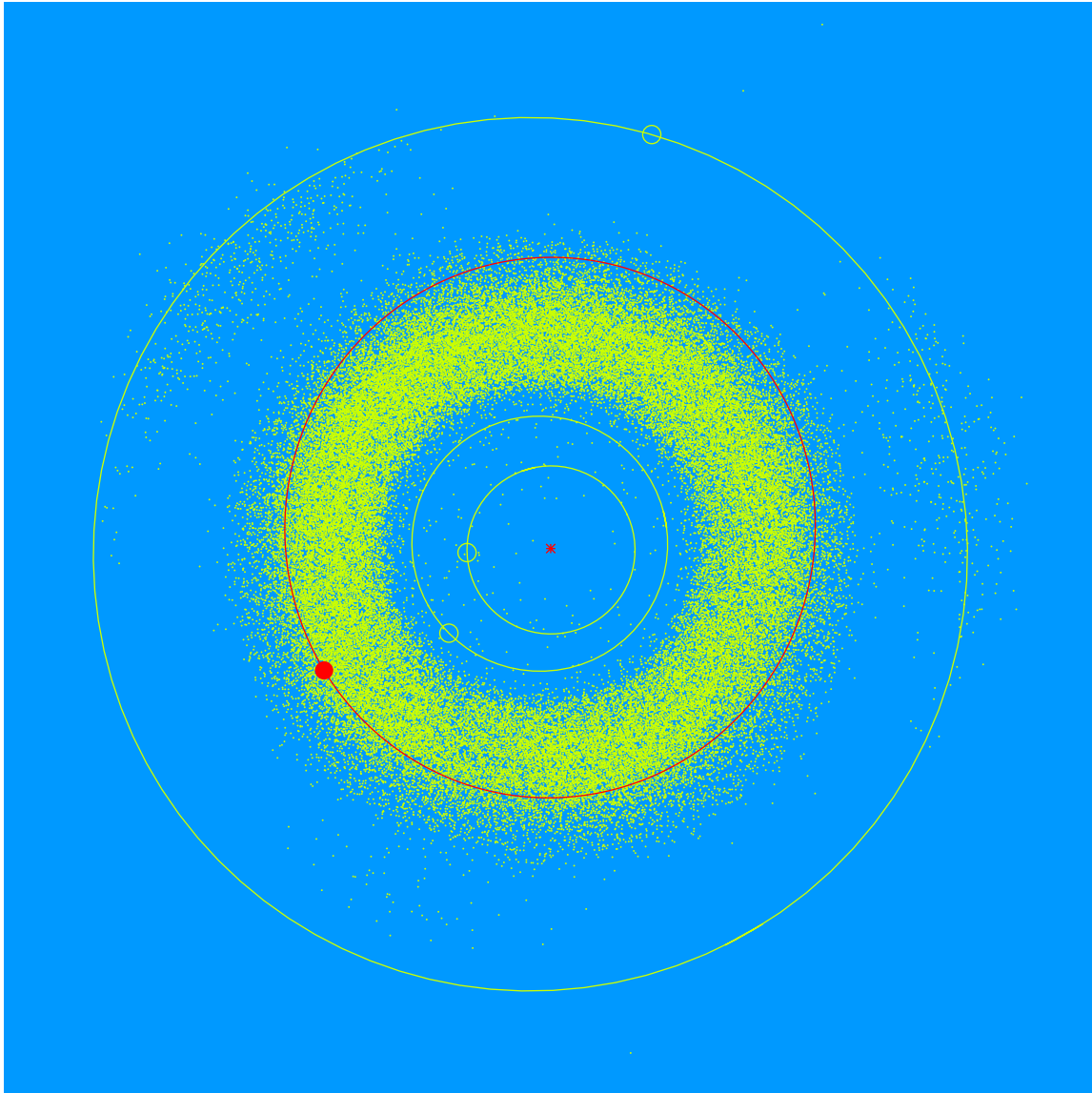


(26702) Naber = 2001 FK₁₄₃

Discovered 2001 Mar. 23 by the Lowell Observatory Near-Earth Object Search at the Anderson Mesa Station.

Thomas Naber (b. 1957) is a member of Lowell Observatory's Advisory Board. Tom supports Lowell Observatory with his time, talent, and treasure. He is a member of Lowell Observatory's Investment Committee.



Semimajor axis	3.22 AU
Eccentricity	0.077
Inclination	10.43 deg
Diameter	5–8 km