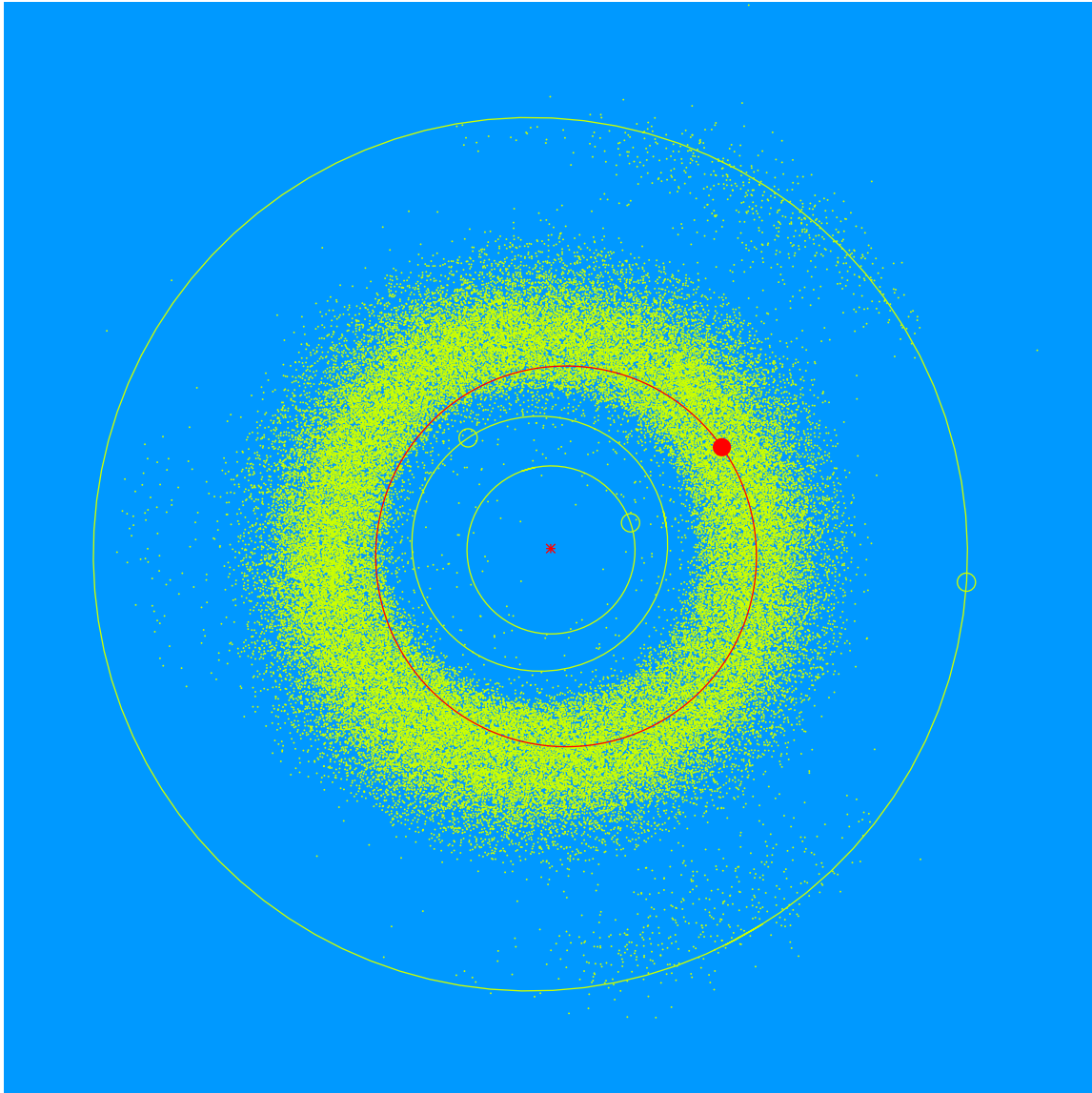


(28146) Nackard = 1998 TC<sub>32</sub>

Discovered 1998 Oct. 11 by the Lowell Observatory Near-Earth Object Search at the Anderson Mesa Station.

Palmer Nackard (b. 1988) and his family donate their time and talent to Lowell Observatory and other entities in the Flagstaff area. Palmer is a member of Lowell Observatory's Advisory Board and Executive Committee.



Semimajor axis	2.27 AU
Eccentricity	0.090
Inclination	4.59 deg
Diameter	3–4 km