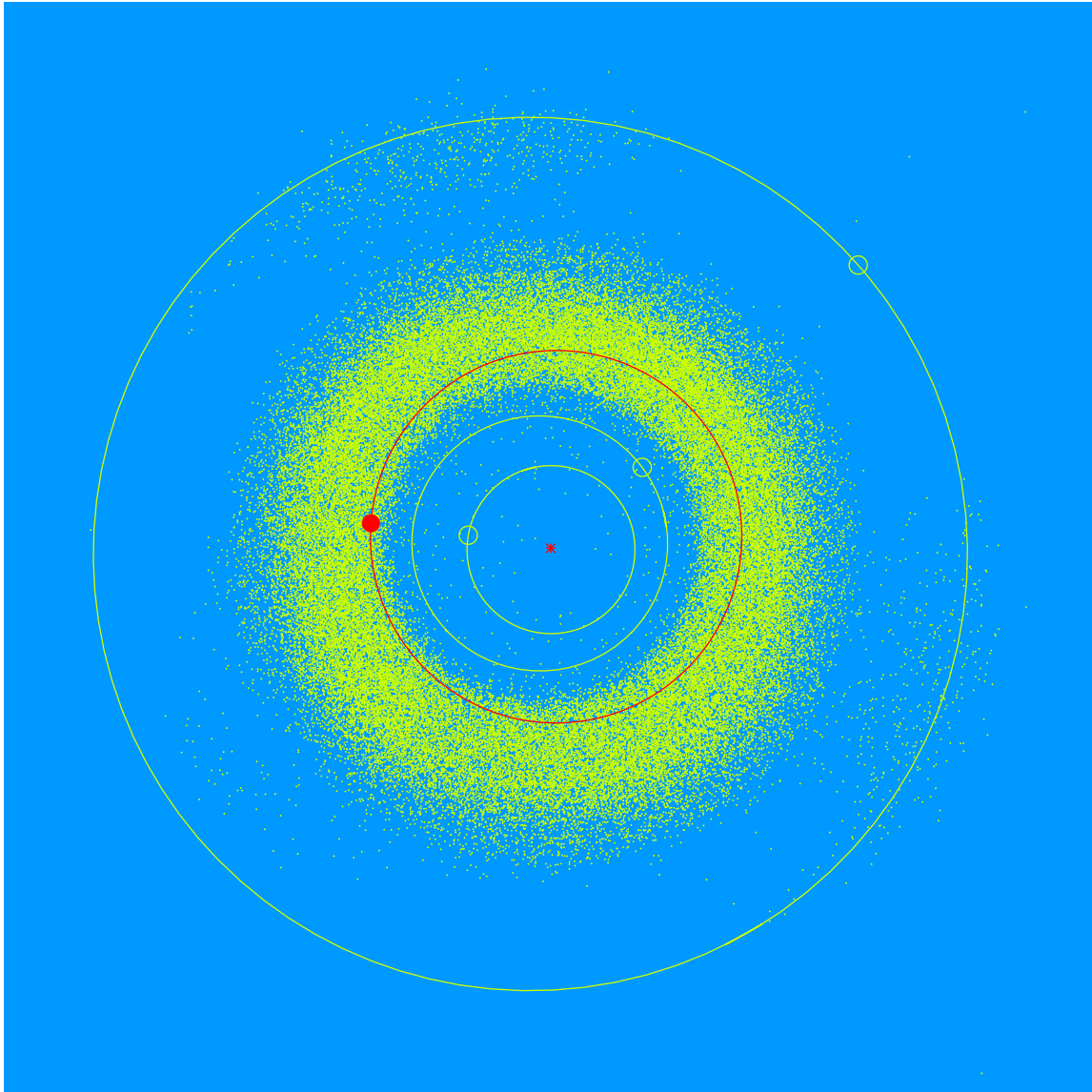


(28589) Nisley = 2000 EL₁₂₆

Discovered 2000 Mar. 11 by the Lowell Observatory Near-Earth Object Search at the Anderson Mesa Station.

Ishara Nisley (b. 1995) received her S.B. degree from MIT in planetary science in 2017, then joined Lowell Observatory in 2017 as an Observer Technician for the Navy Precision Optical Interferometer. She has been working as an Observer/Operator at the Lowell Discovery Telescope since 2019.



Semimajor axis	2.22 AU
Eccentricity	0.069
Inclination	3.23 deg
Diameter	1–2 km