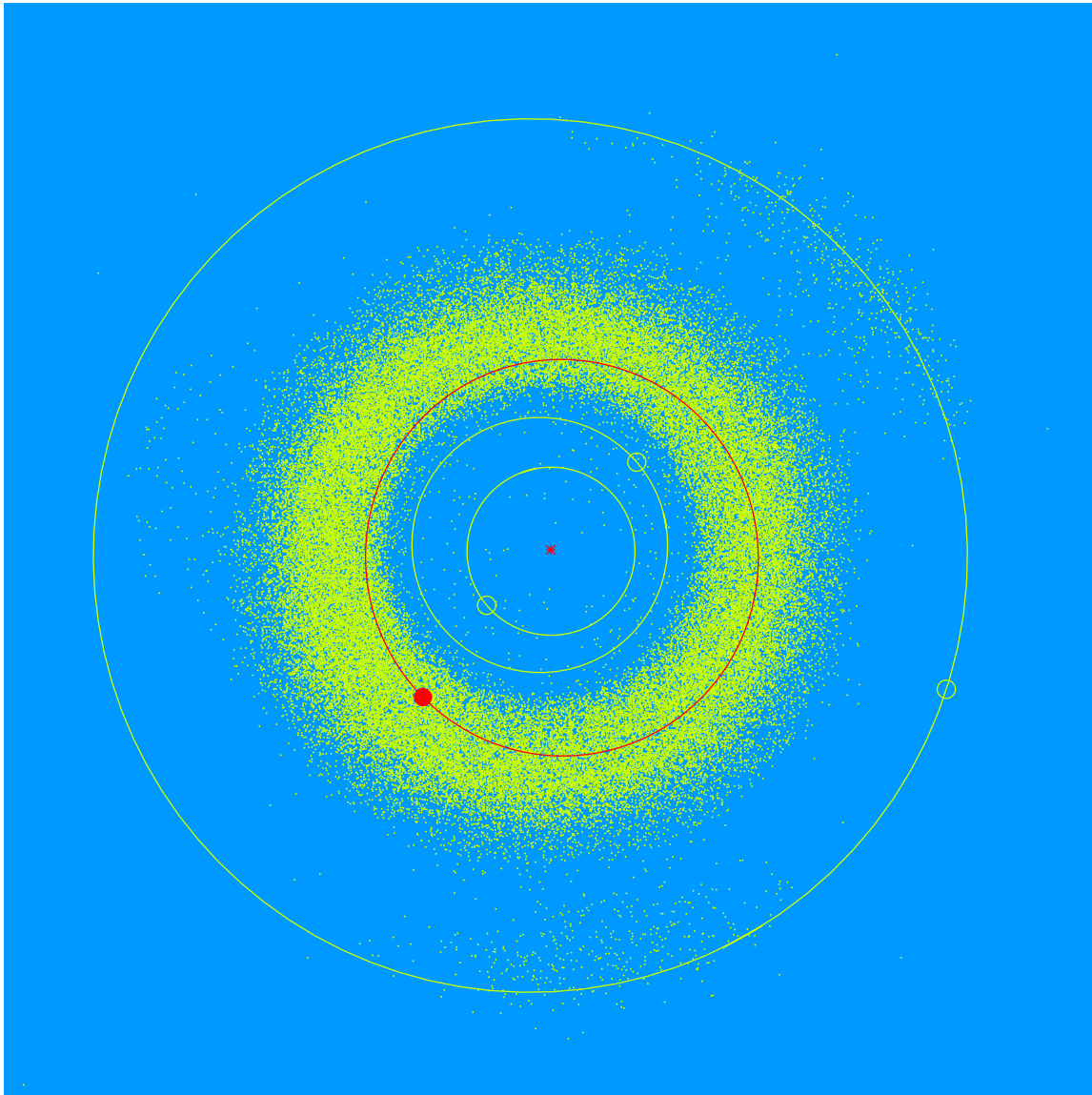


(44167) Patriciaquinn = 1998 JA₃

Patricia Quinn (b. 1956) had a career as an engineer managing water projects in the US. She is committed to STEM experiences for Lowell Observatory guests of all ages. Pat became a member of the Lowell Observatory Advisory Board in 2022.



Semimajor axis	2.36 AU
Eccentricity	0.068
Inclination	8.21 deg
Diameter	2-4 km