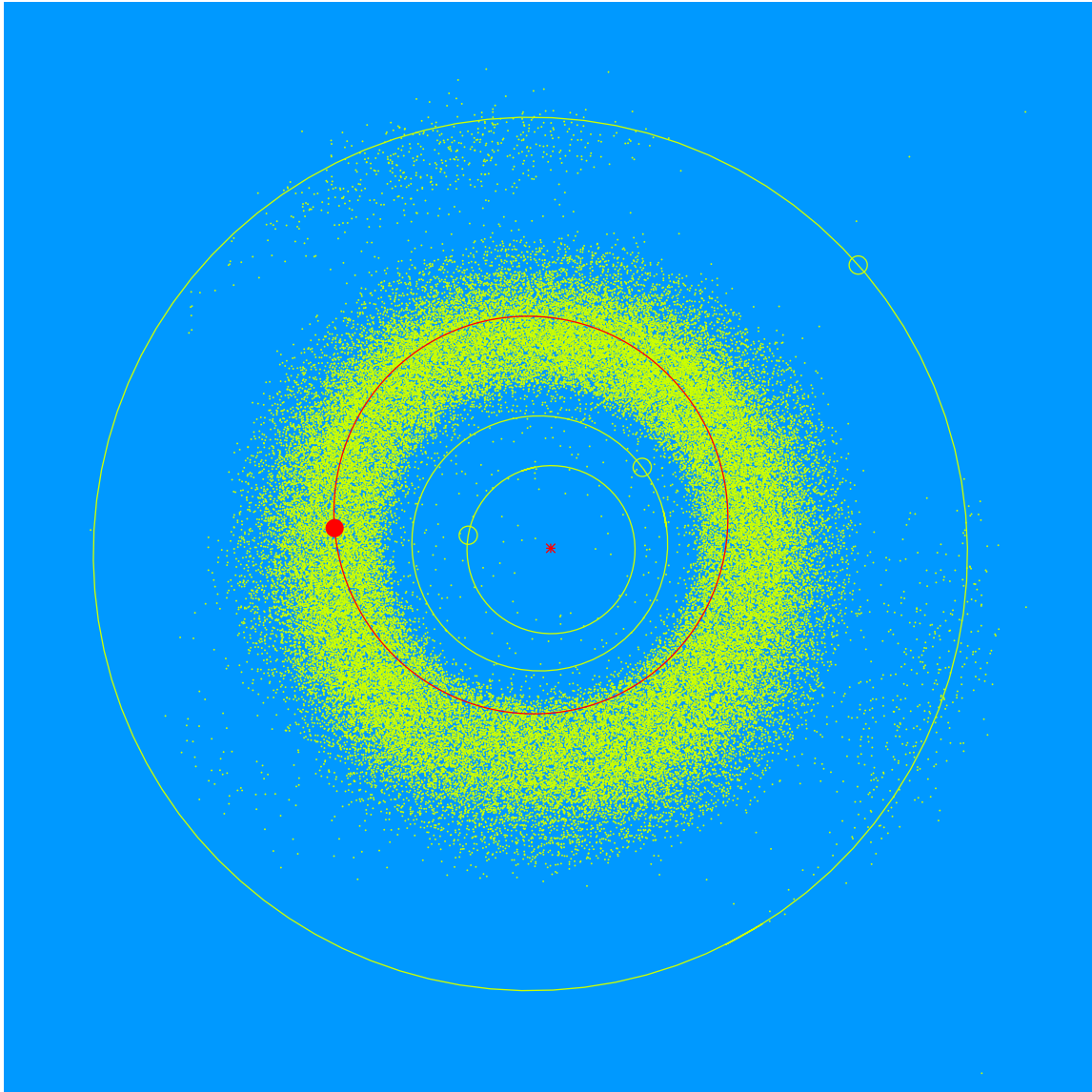


(28591) Racheldilger = 2000 EC₁₃₀

Discovered 2000 Mar. 11 by the Lowell Observatory Near-Earth Object Search at the Anderson Mesa Station.

Rachel Dilger (b. 1985) dreamed of joining a space program since childhood. Rachel's involvement with Lowell Observatory's programs has been a way to make that dream come true. Rachel serves on Lowell Observatory's Advisory Board and has volunteered with the Observatory's marketing and technical efforts.



Semimajor axis	2.38 AU
Eccentricity	0.193
Inclination	2.55 deg
Diameter	2–3 km