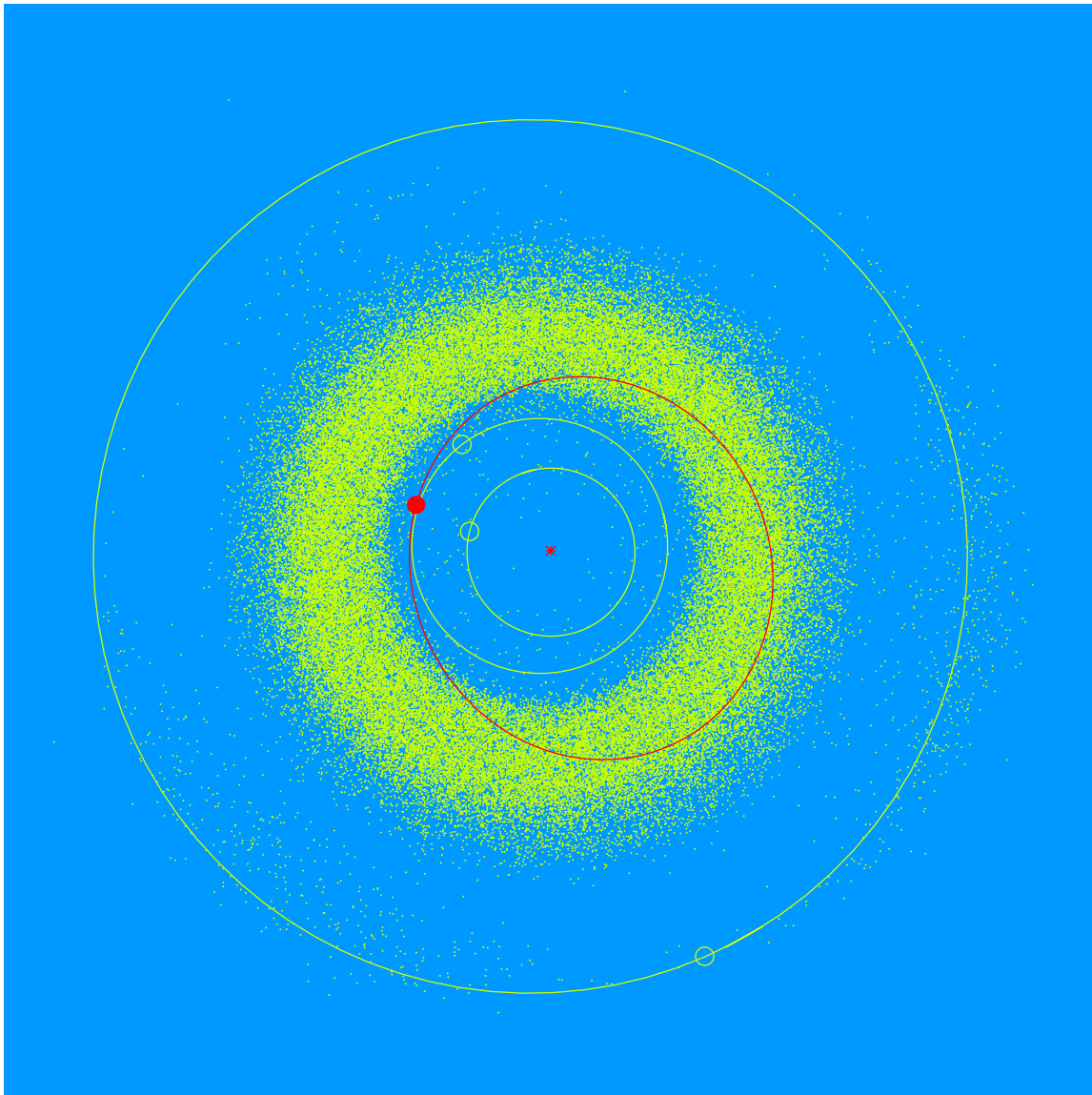


(1657) Roemera = 1961 EA

Discovered 1961 Mar. 06 by P. Wild at Berne-Zimmerwald.

Named by the discoverer in honor of Dr. Elizabeth Roemer, U.S. Naval Observatory, in appreciation of her untiring and successful efforts to advance the knowledge of the motions and physical properties of comets and minor planets.



Semimajor axis	2.35 AU
Eccentricity	0.237
Inclination	23.38 deg
Diameter	6–8 km