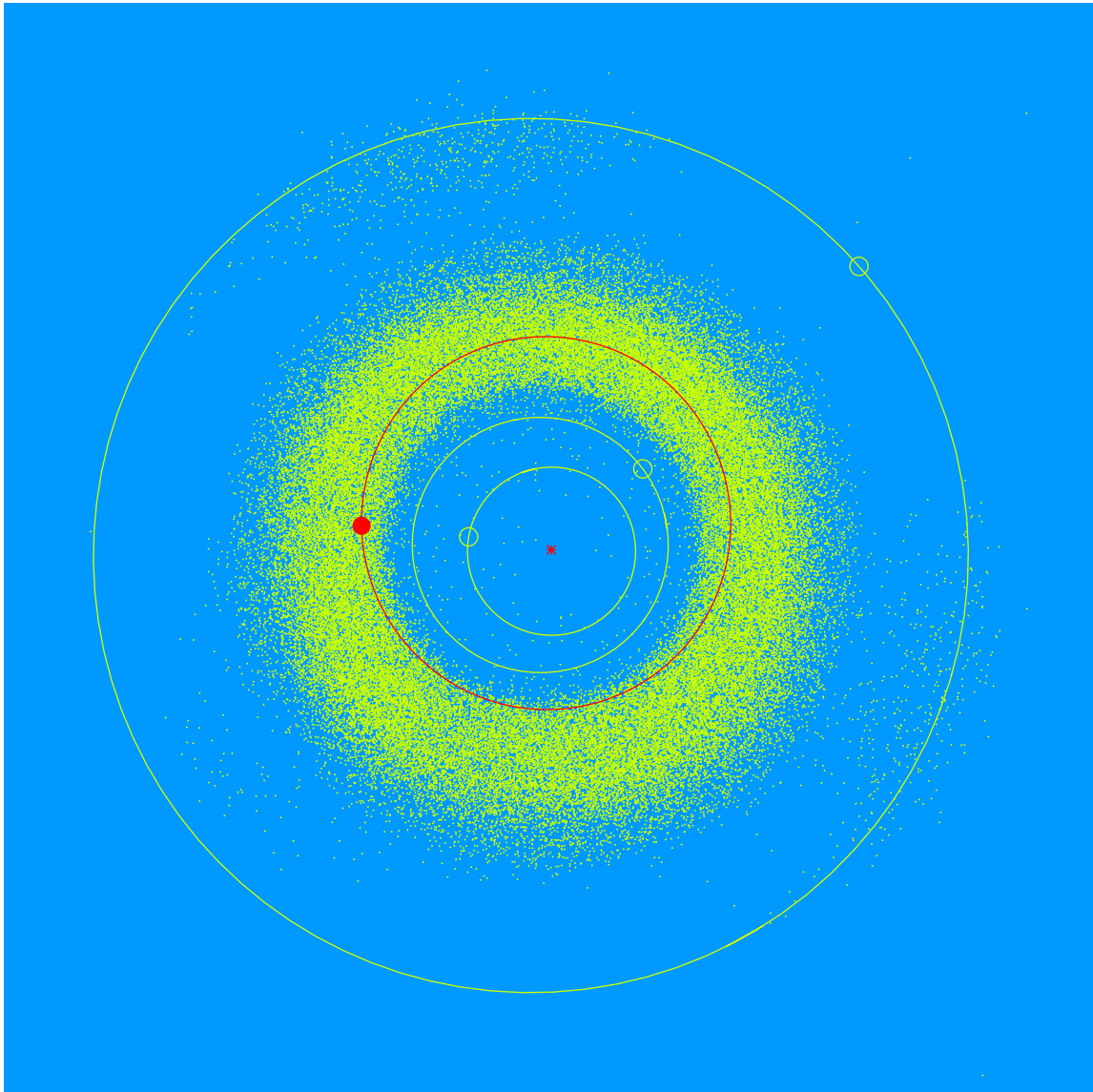


(30091) Stephenbrown = 2000 EY<sub>130</sub>

Discovered 2000 Mar. 11 by the Lowell Observatory Near-Earth Object Search at the Anderson Mesa Station.

Stephen W. Brown (b.1943) is a trustee of the Lowell Observatory Foundation. He is the Emeritus Edward M. Carson Chair and Professor of Marketing at Arizona State University and Strategic Partner with The Insight Group. He has served in leadership roles with many non-profit boards, including being the President of the American Marketing Association.



Semimajor axis	2.22 AU
Eccentricity	0.146
Inclination	2.01 deg
Diameter	1–2 km