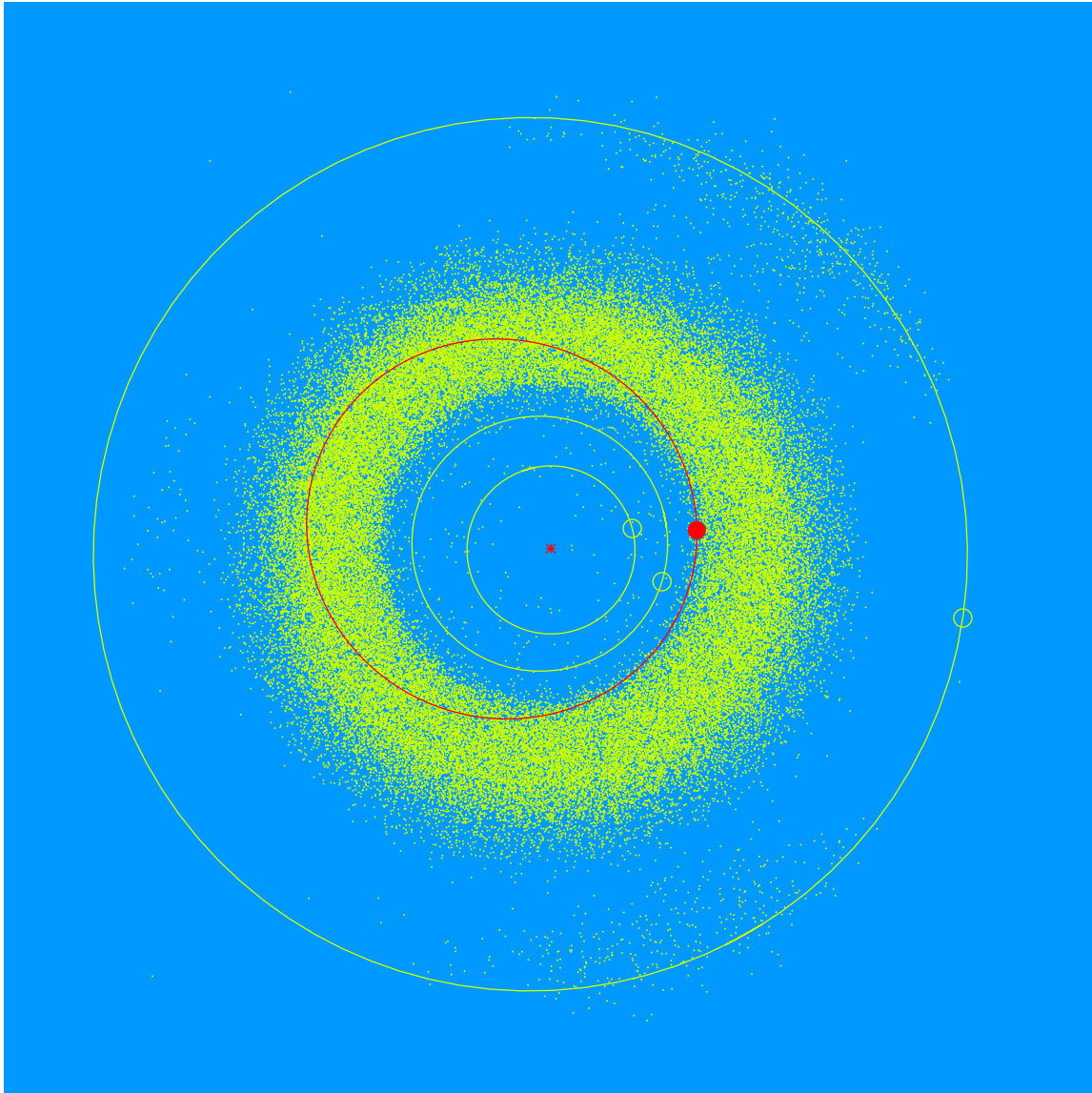


(19123) Stephenlevine = 1986 TP<sub>1</sub>

Discovered 1986 Oct. 7 by E. Bowell at the Anderson Mesa Station of the Lowell Observatory.

Stephen E. Levine (b. 1965), an astronomer at Lowell Observatory, is the Discovery Channel Telescope Commissioning Scientist. His research includes large astrometric surveys and the numerical simulation of the dynamics of astrophysical disk systems.



|                |          |
|----------------|----------|
| Semimajor axis | 2.34 AU  |
| Eccentricity   | 0.269    |
| Inclination    | 2.97 deg |
| Diameter       | 2–3 km   |