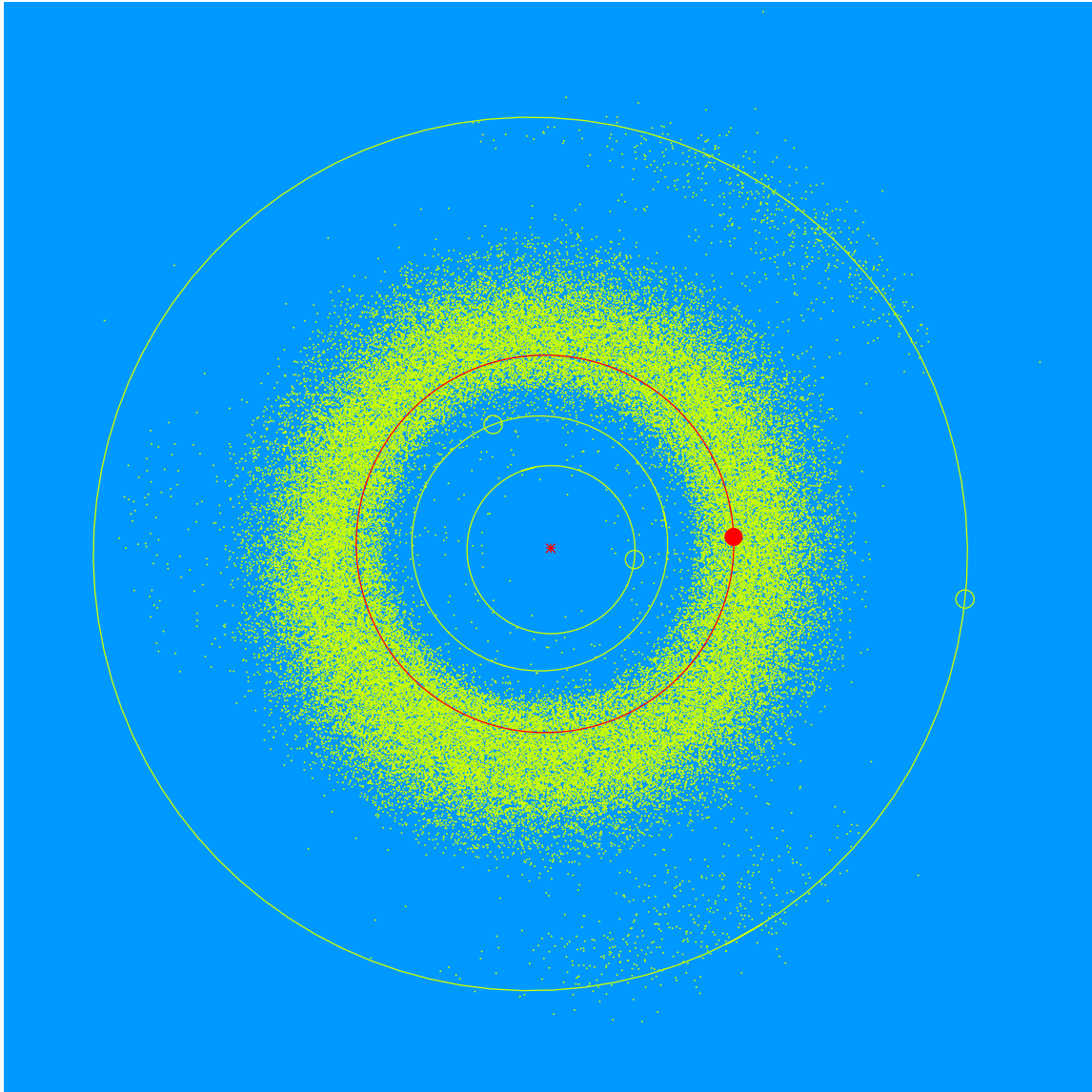


(27032) Veazey = 1998 RQ₅

Discovered 1998 Sep. 15 by the Lowell Observatory Near-Earth Object Search at the Anderson Mesa Station.

Sally O. Veazey (b. 1939) is a member of Lowell Observatory's Advisory Board. Sally shares her time and talent with Lowell Observatory by volunteering when needed. Sally is retired and spends her time working with the Women's Assistance League managing their thrift shop.



Semimajor axis	2.25 AU
Eccentricity	0.038
Inclination	0.81 deg
Diameter	2–3 km