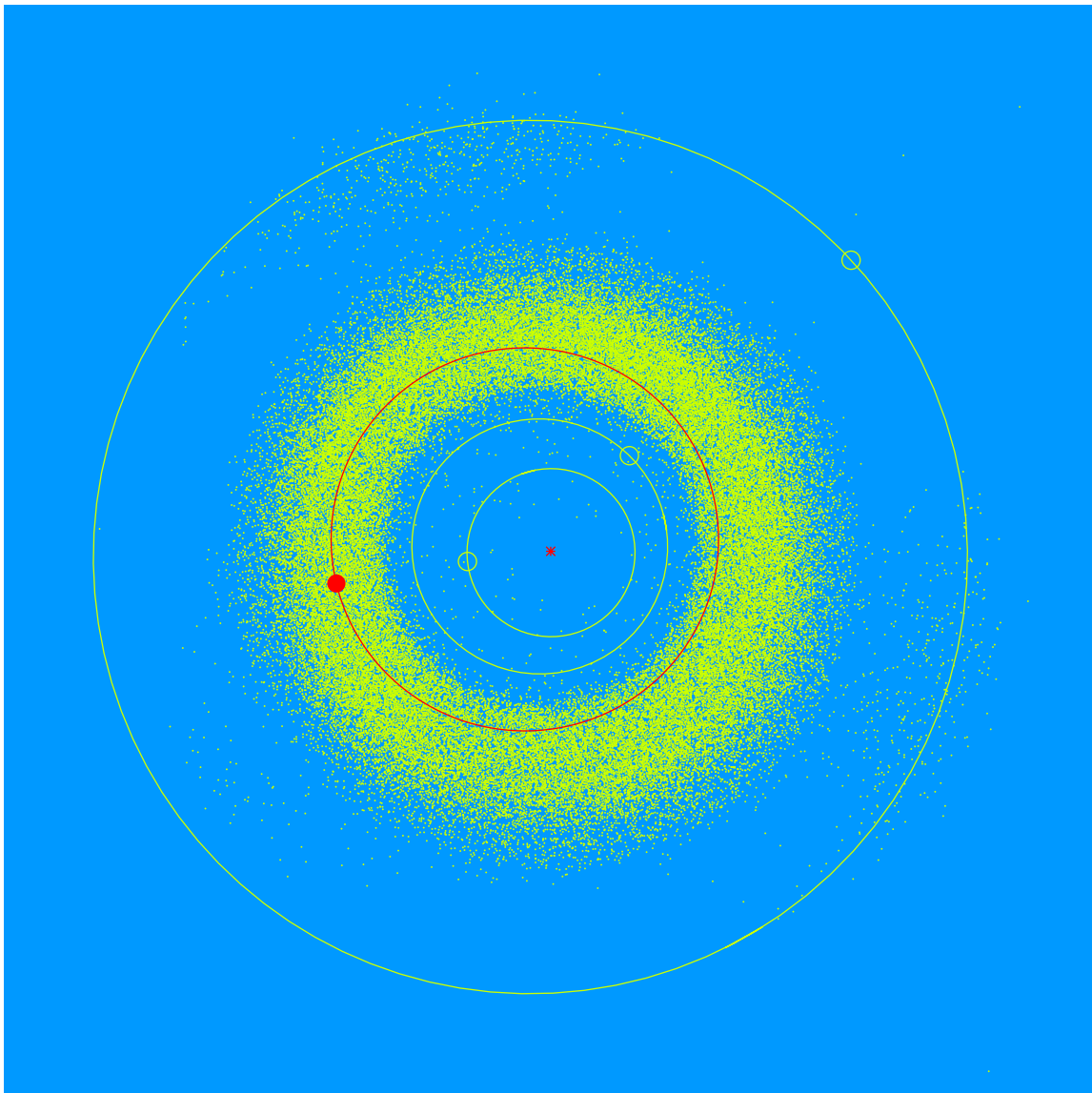


(30112) Weistrop = 2000 FZ₂₅

Discovered 2000 Mar. 27 by the Lowell Observatory Near-Earth Object Search at the Anderson Mesa Station.

Donna Weistrop (b. 1944) is a trustee and chair of the Lowell Observatory Foundation. She is an Adjunct Faculty member at Northern Arizona University (NAU), a Research Associate at the Museum of Northern Arizona, and a member of the Advisory Council of NAU's Martin-Springer Institute. She even helped build an instrument for the Hubble Space Telescope.



Semimajor axis	2.31 AU
Eccentricity	0.148
Inclination	7.65 deg
Diameter	3–5 km