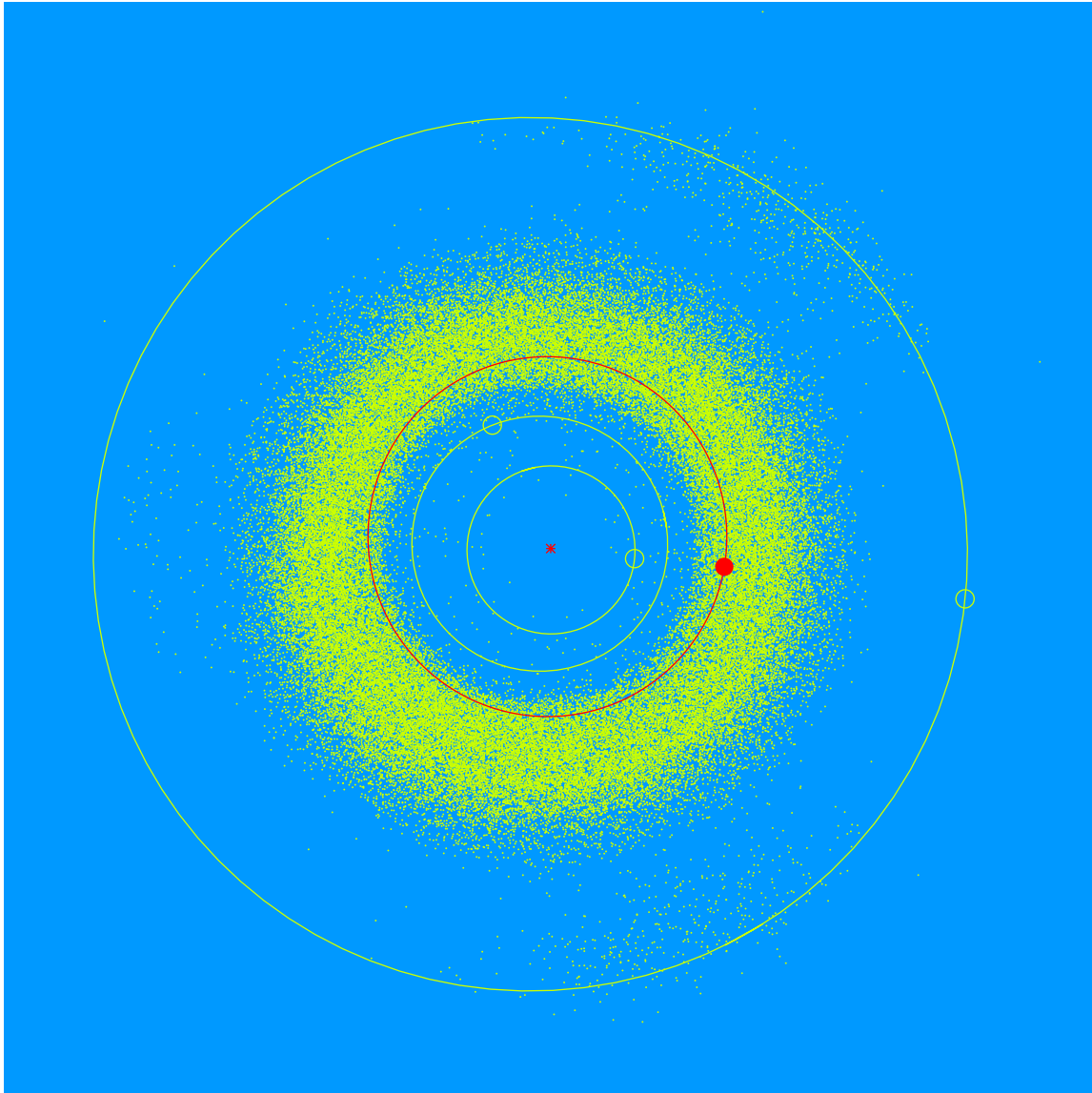


**(27061) Wong = 1998 SW<sub>53</sub>**

Discovered 1998 Sep. 16 by the Lowell Observatory Near-Earth Object Search at the Anderson Mesa Station.

Curtis G. Wong (b. 1954) is a member of Lowell Observatory's Advisory Board. Curtis gives of this time and talent helping Lowell Observatory fulfill its mission. He supports Lowell's educational programs.



Semimajor axis	2.14 AU
Eccentricity	0.069
Inclination	2.60 deg
Diameter	2–3 km