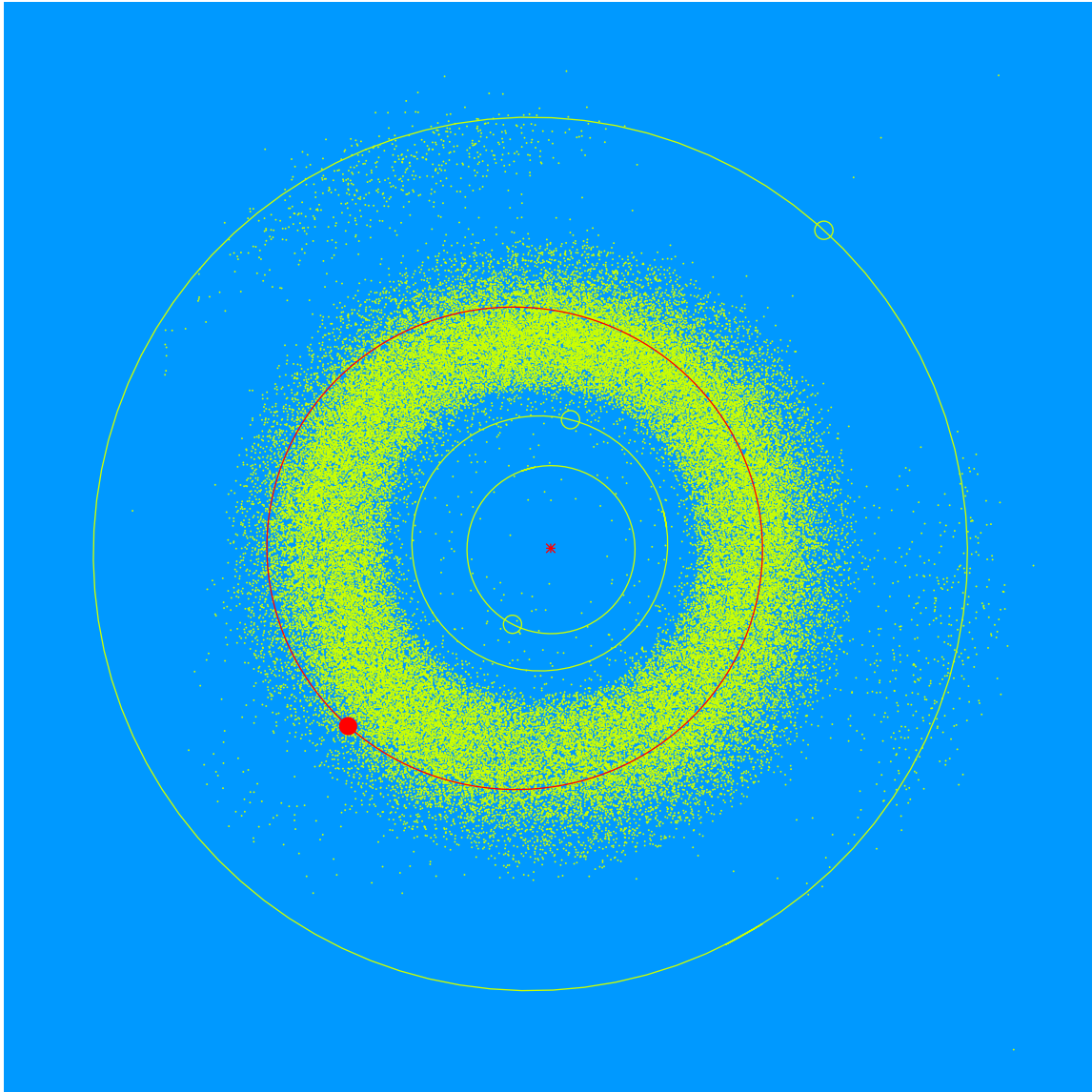


(27565) de Wet = 2000 KX₈₁

Discovered 2000 May 24 by the Lowell Observatory Near-Earth Object Search at the Anderson Mesa Station.

Martin de Wet (b.1952) earned a master's degree in Aeronautical and Astronautical Engineering and worked on commercial, scientific, and governmental spacecraft. He worked in the space launch industry before retiring. Martin serves on Lowell Observatory's Advisory Board.



Semimajor axis	2.95 AU
Eccentricity	0.151
Inclination	10.50 deg
Diameter	4–5 km