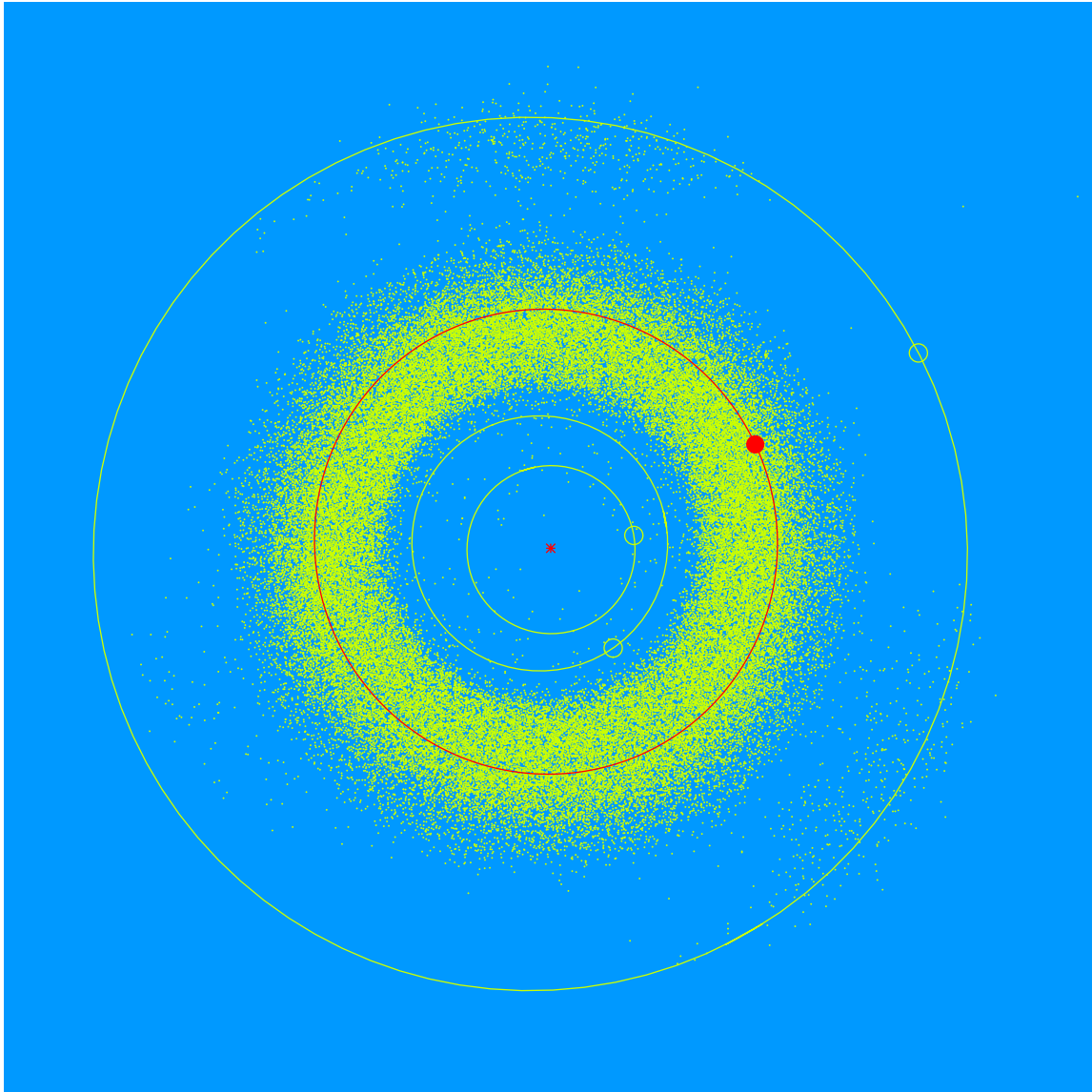


(28408) van Baalen = 1999 TS<sub>222</sub>

Discovered 1999 Oct. 2 by the Lowell Observatory Near-Earth Object Search at the Anderson Mesa Station.

Mark van Baalen (b. 1945) has served on the Lowell Observatory Advisory Board since its founding in 1987. His career in geological sciences and astronomy at Harvard University spanned over five decades. He is a founding member of the New Hampshire Geological Society and a Life Trustee of the Mount Washington Observatory.



Semimajor axis	2.77 AU
Eccentricity	0.036
Inclination	7.98 deg
Diameter	3–4 km