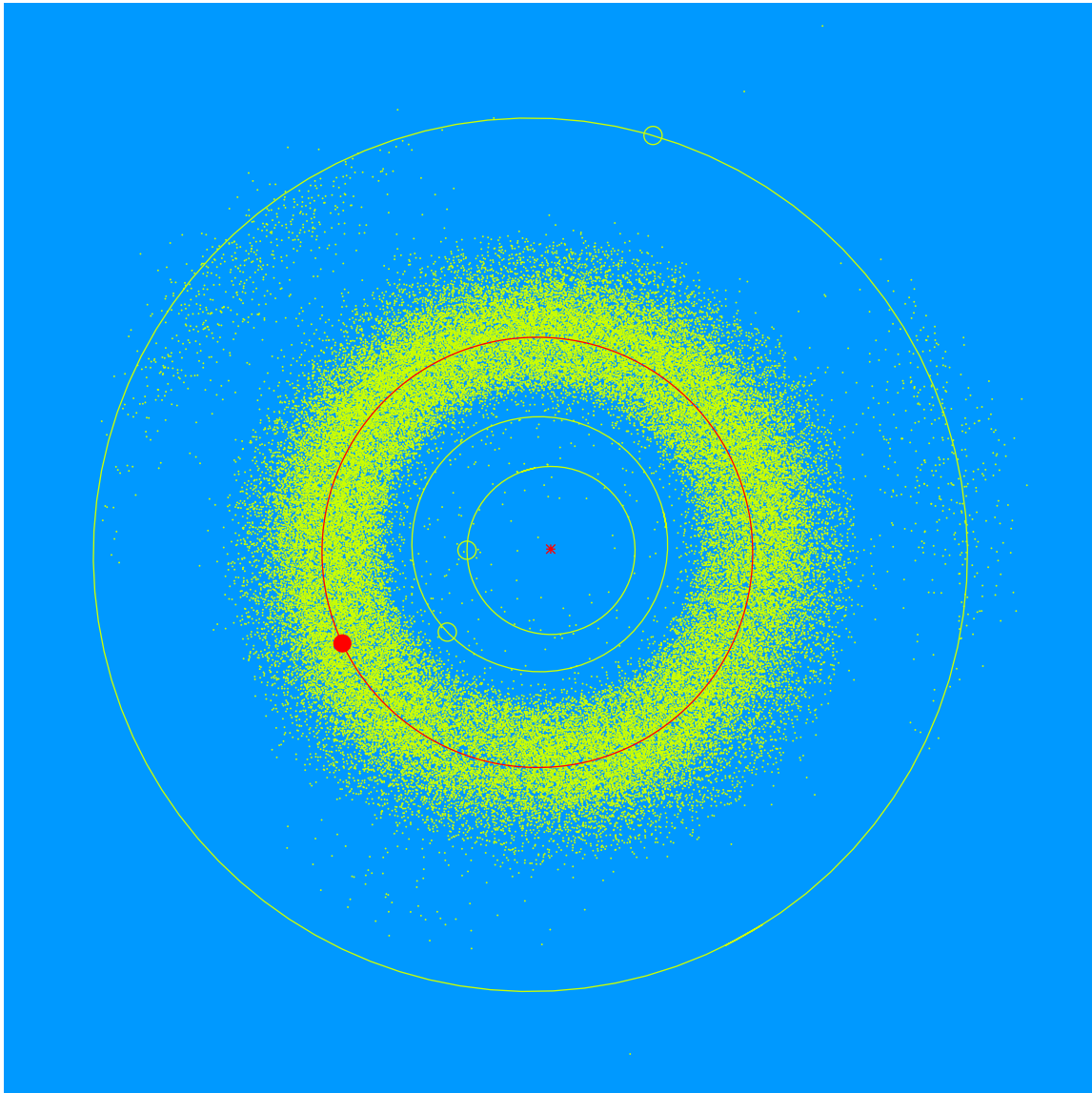


(25961) Conti = 2001 FL₂₂

Discovered 2001 Mar 21 by the Lowell Observatory Near-Earth Object Search at the Anderson Mesa Station.

Peter S. Conti (b. 1934) is an astronomer known for his studies of hot luminous stars, such as O-type, Wolf-Rayet, and Luminous Blue Variables, and the evolutionary connection between them.



Semimajor axis	2.57 AU
Eccentricity	0.063
Inclination	3.99 deg
Diameter	2.5–3.5 km