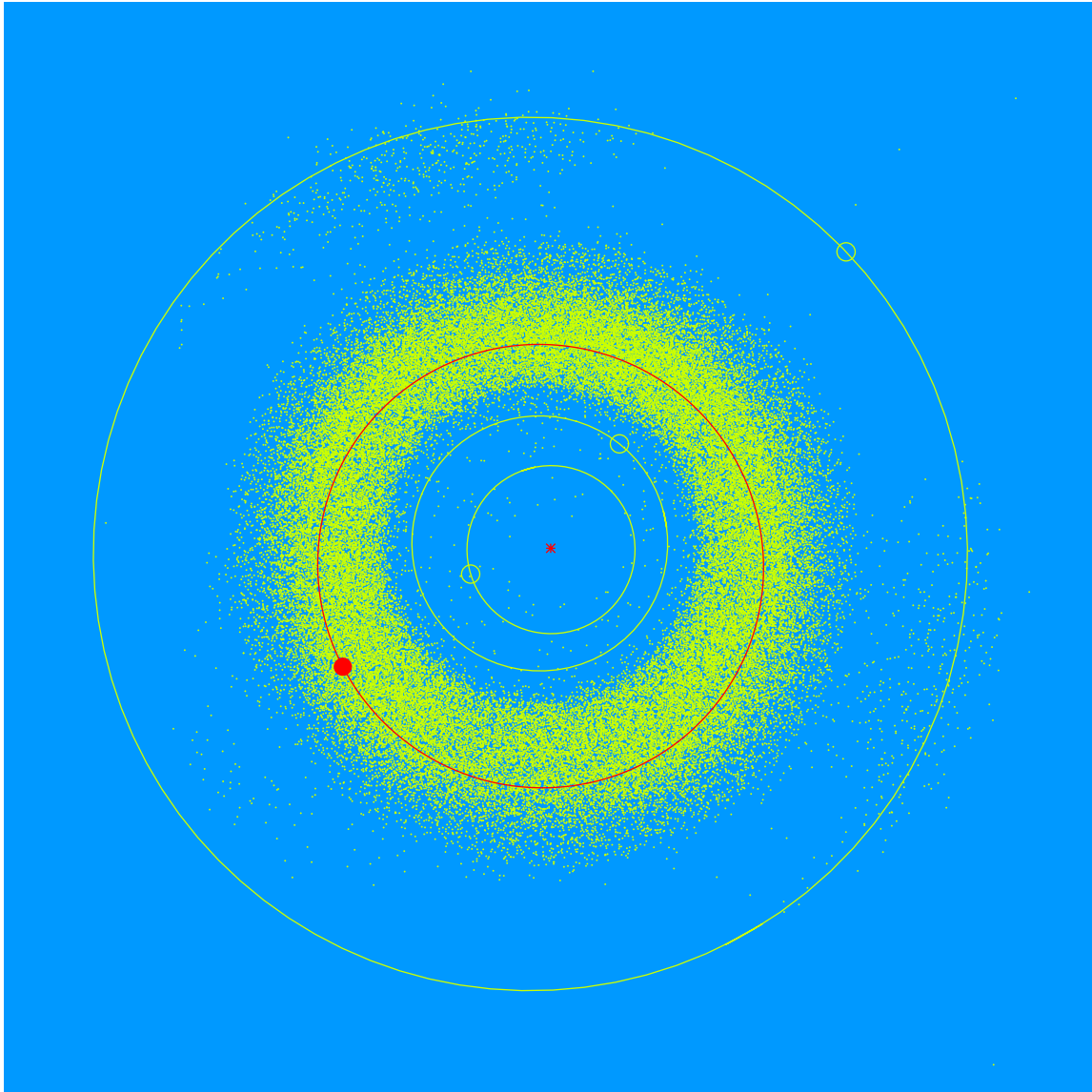


(27510) Lisaactor = 2000 GD₁₄₃

Discovered 2000 Apr. 07 by the Lowell Observatory Near-Earth Object Search at the Anderson Mesa Station.

Lisa Actor (b. 1957) is the Deputy Director for Development at Lowell Observatory. She is in charge of all of Lowell's philanthropic activities. She and her team have raised funds for Lowell's many research and outreach programs, as well as for its capital expansion projects.



Semimajor axis	2.67 AU
Eccentricity	0.094
Inclination	9.54 deg
Diameter	3–5 km