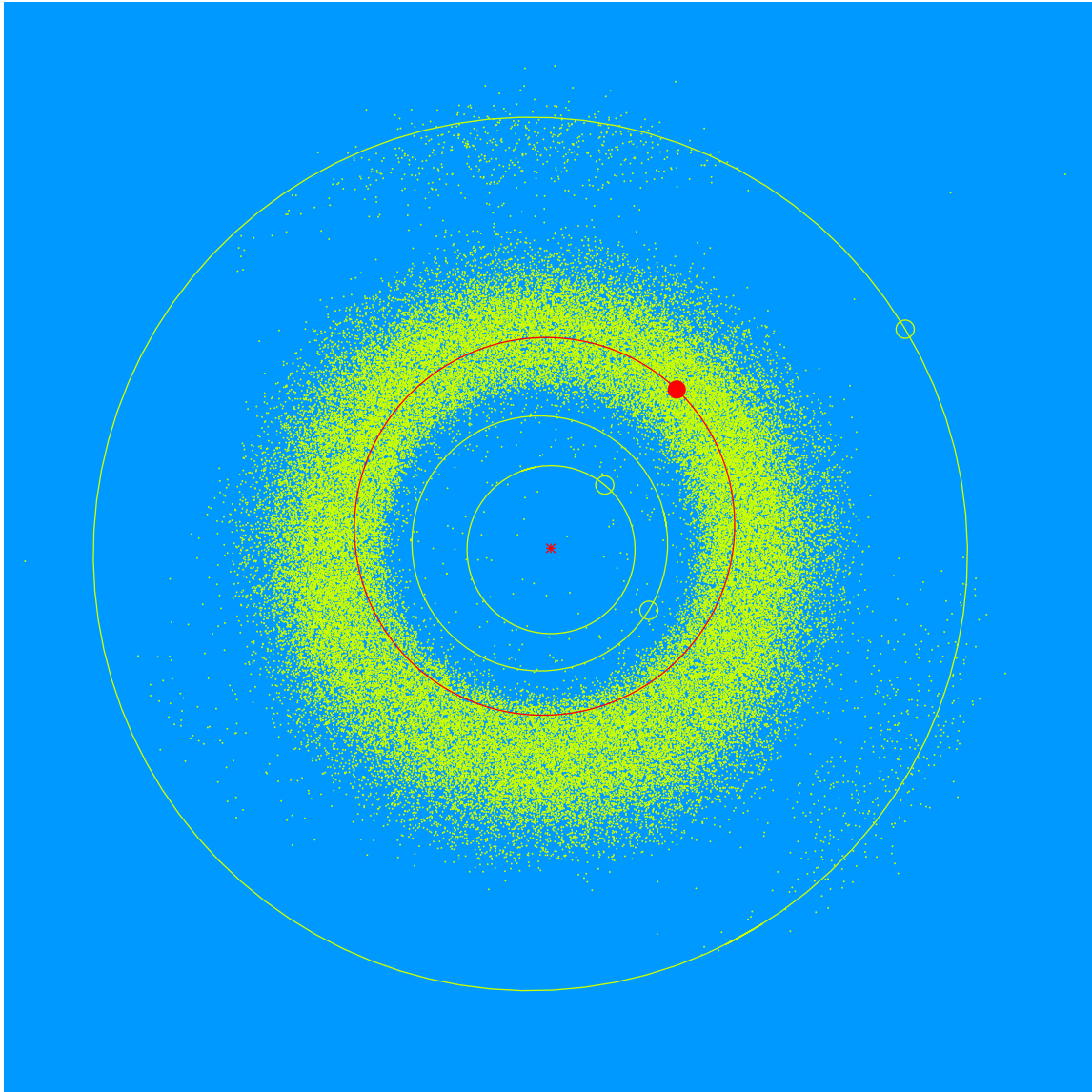


(27248) Schristensen = 1999 VN₂₁₀

Discovered 1999 Nov. 12 by the Lowell Observatory Near-Earth Object Search at the Anderson Mesa Station.

Samantha Christensen (b. 1982) is the Deputy Director for Education at Lowell Observatory. She oversees all of Lowell's outreach programs with over 100 000 visitors each year. She is also one of the leaders in the design and development of Lowell's upcoming Astronomy Discovery Center.



Semimajor axis	2.28 AU
Eccentricity	0.120
Inclination	10.85 deg
Diameter	2–3 km