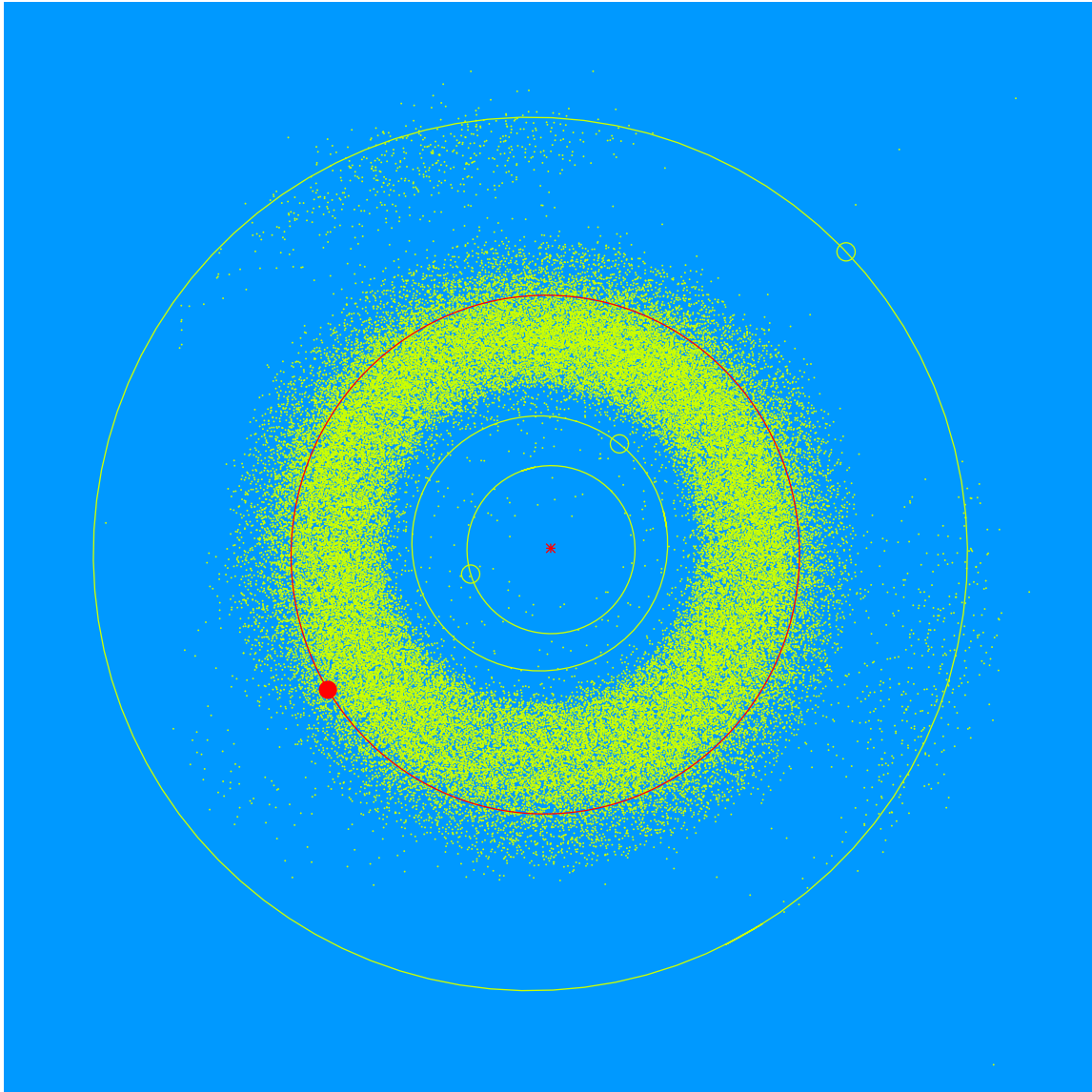


(27509) Burcher = 2000 GB₁₄₃

Discovered 2000 Apr. 07 by the Lowell Observatory Near-Earth Object Search at the Anderson Mesa Station.

Sarah Burcher (b. 1990) is Outreach Manager at Lowell Observatory. She oversees the outreach team and the programs they deliver. She was a critical member of the team that commissioned the Giovale Open Deck Observatory and has significantly improved the quality of the live video observing program.



Semimajor axis	3.09 AU
Eccentricity	0.040
Inclination	11.49 deg
Diameter	4–5 km