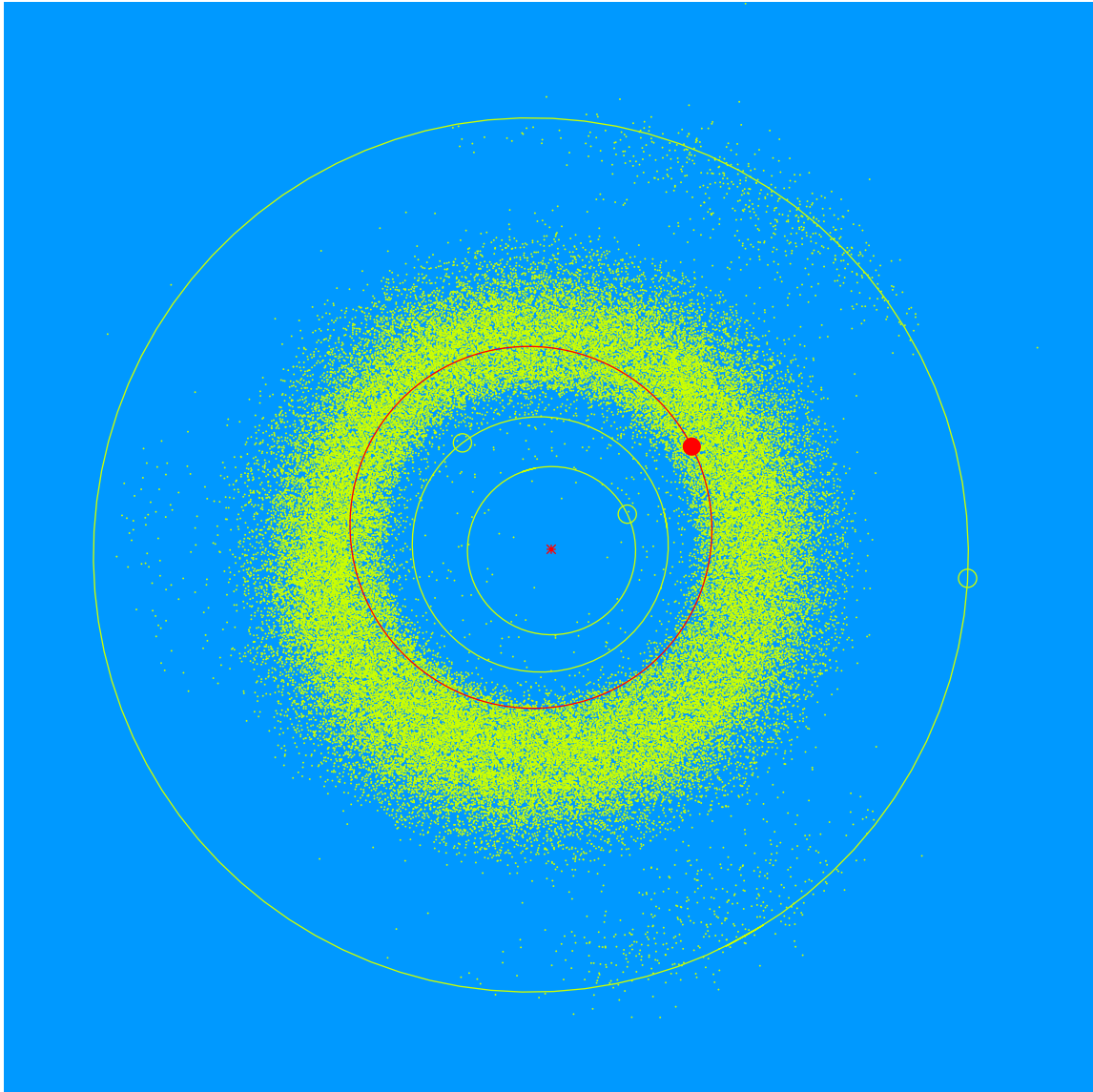


**(27096) Jelenalane = 1998 UL<sub>24</sub>**

Discovered 1998 Oct. 18 by the Lowell Observatory Near-Earth Object Search at the Anderson Mesa Station.

Jelena Lane (b. 1993), Event Coordinator at Lowell Observatory, brings the outreach programs to under served groups in the community. She organizes special events that involve partnerships with local businesses and facilitates the rental of venues for science conferences and other functions.



Semimajor axis	2.17 AU
Eccentricity	0.163
Inclination	3.01 deg
Diameter	2–3 km