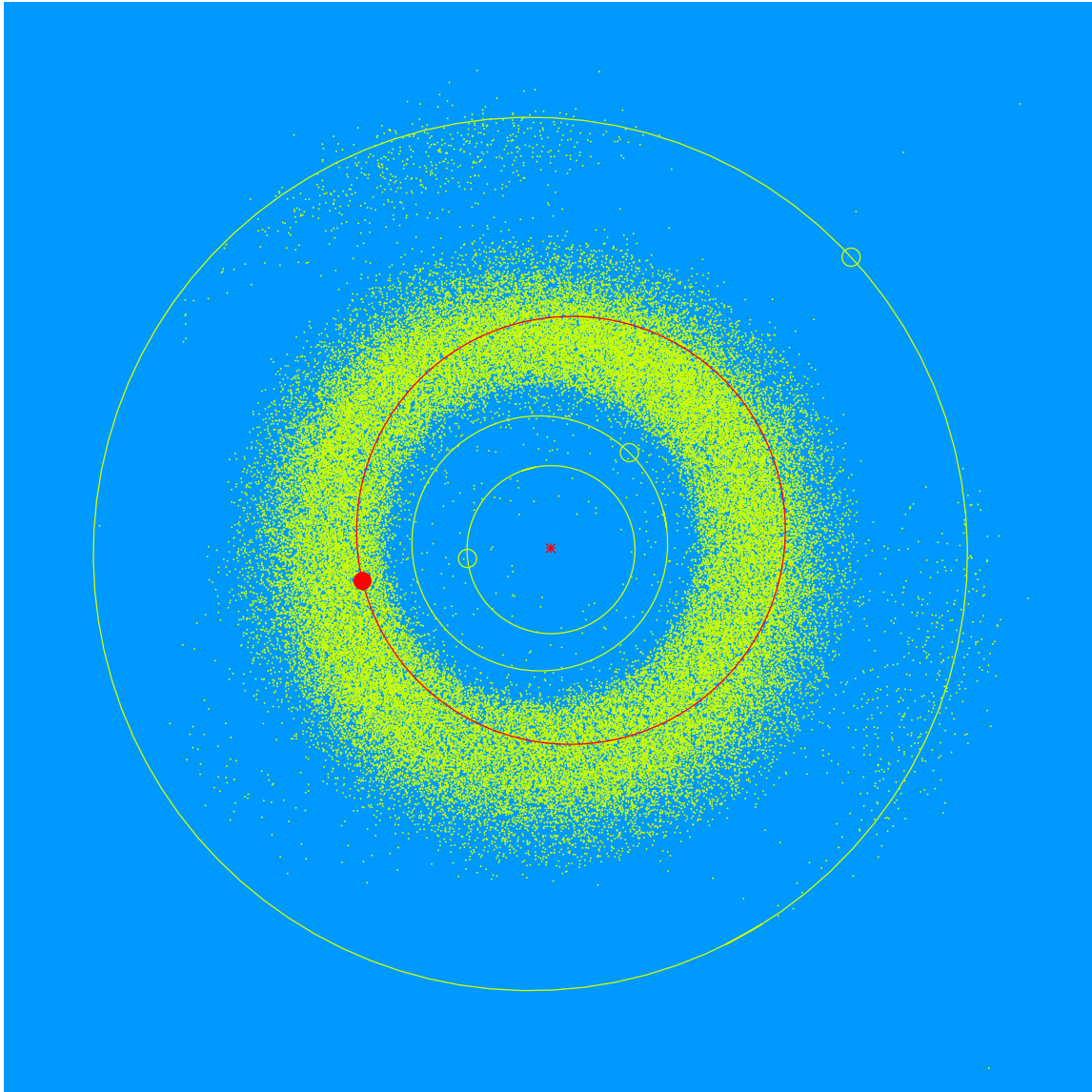


(27431) Jimcole = 2000 FM<sub>25</sub>

Discovered 2000 Mar. 27 by the Lowell Observatory Near-Earth Object Search at the Anderson Mesa Station.

Jim Cole (b. 1951) is a Senior Public Program Educator at Lowell Observatory. He began by giving campus tours and operating telescopes for the public. He now serves as a telescope technician and was a major contributor to the design and implementation of the Giovale Open Deck Observatory.



Semimajor axis	2.56 AU
Eccentricity	0.127
Inclination	4.96 deg
Diameter	3–4 km